

Active Travel: Concept Lighting Planning Report



Project title	3FM Project	Job number
Report title	Active Travel Route - Concept Lighting - Planning Report	1036912

Document revision history

Revision ref	Issue date	Purpose of issue / description of revision
PL01	01 July 2024	Planning Issue

Document validation (latest issue)

05/07/2024

05/07/2024

05/07/2024

X David Deane

Principal author

Signed by: Darren Kelly

X Darren Kelly

Checked by

Signed by: Darren Kelly

X William Dolan

Verified by

Signed by: Darren Kelly

1.0 Contents

1.0	Contents	2
2.0	Project Overview	3
2.1	Introduction	3
2.2	Active Travel Route Overview	3
2.3	Appendices	4
3.0	3FM Active Travel Route - Stop Points	5
3.1	Active Travel Route Stop Points Description	5
3.2	Lighting Standards and Guidelines	5
3.3	Lighting Design Criteria	5
3.4	Lighting Controls	5
3.5	Proposed Lighting Installation	5
3.6	Proposed Luminaire Types	10
4.0	Appendix 1 – Drawing Register: Active Travel Route Concept Lighting	12
5.0	Appendix 2 – Planning Drawings: Active Travel Route Concept Lighting	13

2.0 Project Overview

2.1 Introduction

This Design Statement has been prepared in support of an application for the 3FM Project being submitted by Dublin Port Company, focusing in particular on the proposed new Active Travel Route which forms part of the overall proposed development. The 3FM Project represents the concluding phase of the Masterplan initiatives essential for realizing Dublin Port's full potential by 2040. The project primarily centres on the Dublin Port Company-owned lands situated on the Poolbeg Peninsula, which constitutes one-fifth of the entire Dublin Port estate and is commonly referred to as the southern port area.

Forming a key element of the 3FM project, the Active Travel route accounts for a 5.5km travel route for cyclists and pedestrians to easily navigate through Dublin Port lands, connecting areas of Dublin city north and south.

Cyclists will be afforded an opportunity to travel a direct route on currently hostile and somewhat difficult to navigate lands via a segregated commuter corridor of 5m width. At Pembroke Cove close to Sandymount village, and the proposed 3FM Port Park, a 'share with care' portion of the route is adopted for integration with the proposed parkland. This area will also be used for orientation towards Poolbeg Lighthouse and the Great South Wall which is currently a key leisure attraction of Dublin Bay.

Along the route, a number of stop points are proposed which affords cyclists and pedestrians the opportunity to temporarily deviate from the main path and experience enhanced public spaces, such as public plazas, seating areas, and open parkland. These areas are hard landscaped zones, and varying materials are deployed for their execution. Additionally, to integrate Dulin Port's cultural heritage, the Active Travel Route incorporates fixed interpretive elements aimed at physically conveying the area's historical context and significance. Improvements to linear spaces along the route, and to the perimeter of Pigeon House precinct area are also proposed as part of the project.

Visitor attractions and connecting travel routes within Port lands are a key objective of Dublin Port Company's vision of Masterplan 2040. Proposed Stop Points and connections to adjoining travel corridors and visitor attractions illustrate the commitment by Dublin Port Company to ensure further Port & City integration.

The purpose of this design report is to provide an overview of the proposed Active Travel Route network, which includes an improvement of the character areas within the 3FM Project proposals.

2.2 Active Travel Route Overview

Section 3.0 and beyond of this Report consists of the design of complimentary feature lighting at stop points along the 3FM Active Travel Route cycle and walking. The illumination of the pedestrian footpaths and cycle paths will be undertaken by others with the proposed feature lighting reference in this report being incorporated into the overall 3FM Active Travel Route design and planning report by others.

Section 3.1 discusses the lighting for stop points along an Active Travel Route from the Tolka Estuary to the River Liffey. The focus of this section is specifically on the complimentary feature lighting at these stop points and intermediate stop points.

Section 3.2 provides details on several lighting standards and guidelines that have been applied.

Section 3.3 discusses the illumination of the stop points, which is designed to complement the general lighting of the Active Travel Route and provide aesthetic feature lighting. The illumination of the Active Travel Route is managed by the RPS Group, and this design will be integrated into their lighting design to meet the necessary illumination levels.

Section 3.4 provides details on the proposed use of photocells for controlling the luminaires at stop points. It further discusses how these photocells should be integrated with the lighting controls for the Active Travel Route, ensuring a coordinated and efficient lighting system.

Section 3.5 discusses the proposed lighting installation for the stop points along the Active Travel Route. It will include recessed luminaires, architectural lighting columns, and lighting bollards. The design aims to be non-intrusive, blend with the furniture, and have minimal impact on wildlife. It will match the aesthetic of other lighting projects in the area.

2.3 Appendices

This section includes the appendices, which provide additional information and data that support the main content of the document.

Section 4.0: This section showcases the comprehensive drawing and document register for the 3FM Project Active Travel Route concept lighting design for the stop points, providing a detailed list of all the drawings and documents that have been created and used throughout the project.

Section 5.0: This section displays the planning drawings for the 3FM Project Active Travel Route concept lighting design for the stop points, which have been developed to guide the project's execution and to ensure all aspects of the project are well-planned and organized as well as offering a visual representation of the project's design and layout.

3.0 3FM Active Travel Route - Stop Points

3.1 Active Travel Route Stop Points Description

The Active Travel Route is from the Tolka Estuary to south side of the river Liffey on a new bridge. Along the route there are stop points for the public to stop, rest and look at the view. It is a mix of routes beside public roads, dedicated reserved routes away from public roads and across a dedicated bridge for pedestrians and cyclists.

This section of the report only relates to the complimentary feature lighting at stop points and intermediate stop points.

3.2 Lighting Standards and Guidelines

The lighting standards and guidelines that were applied are set out below:

- HSA Regulations for Electricity
- IS 10101 National Wiring Regulations

3.3 Lighting Design Criteria

The illumination of the stop points is to be complementary to the general illumination of the Active Travel Route and is to provide complimentary aesthetic feature lighting.

The illumination of the Active Travel Route is the responsibility of the RPS Group. This design will be incorporated into the RPS Group lighting design to achieve the required levels of illumination.

3.4 Lighting Controls

Photocells are proposed for controlling the stop point luminaires and should be integrated with the lighting controls for the Active Travel Route lighting.

3.5 Proposed Lighting Installation

The proposed lighting installation will be based on recessed luminaires into seats, walls and in the ground, 4.5-meter architectural lighting columns and a limited number of 1.2 meter lighting bollards.

It shall be non-intrusive and blend into the active travel route furniture and have a minimal effect on the wildlife. The proposed lighting will tie in with the look and feel of very similar fittings used elsewhere on the Port Greenway project and other proposed 3FM public lighting projects.

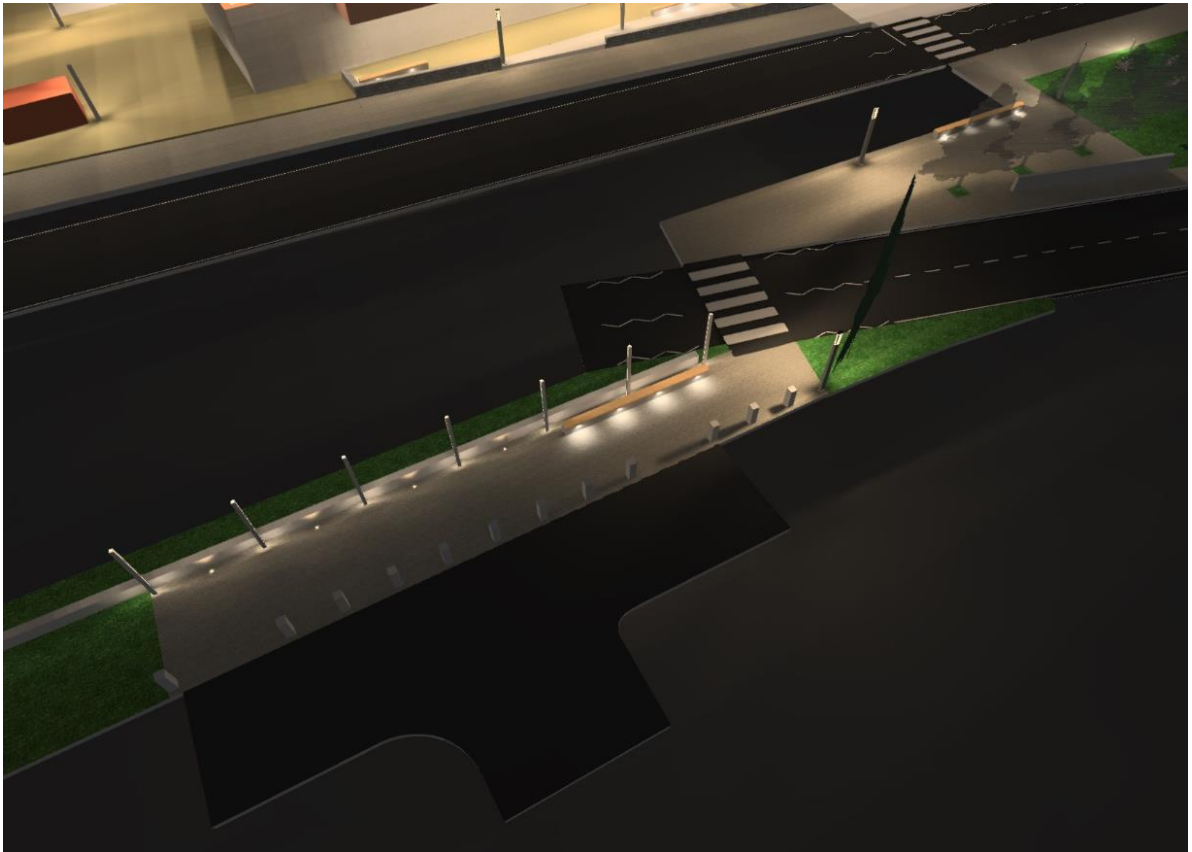


Figure 1 - Stop Point B

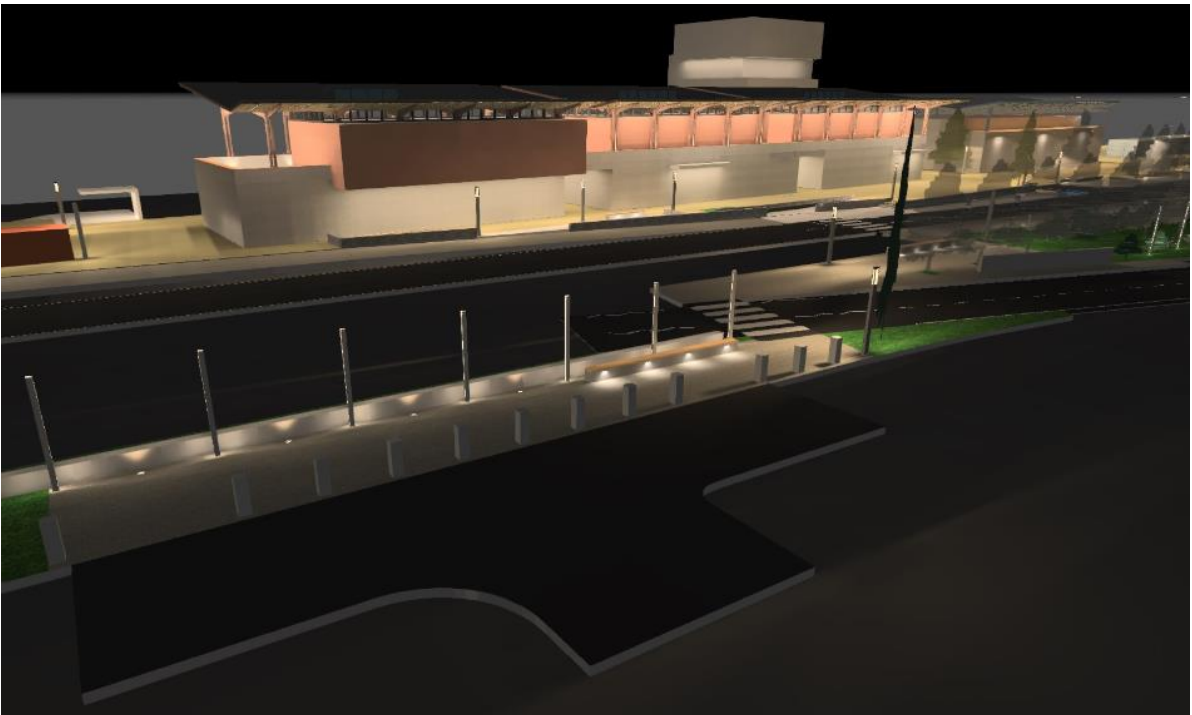


Figure 2 - Stop Point B

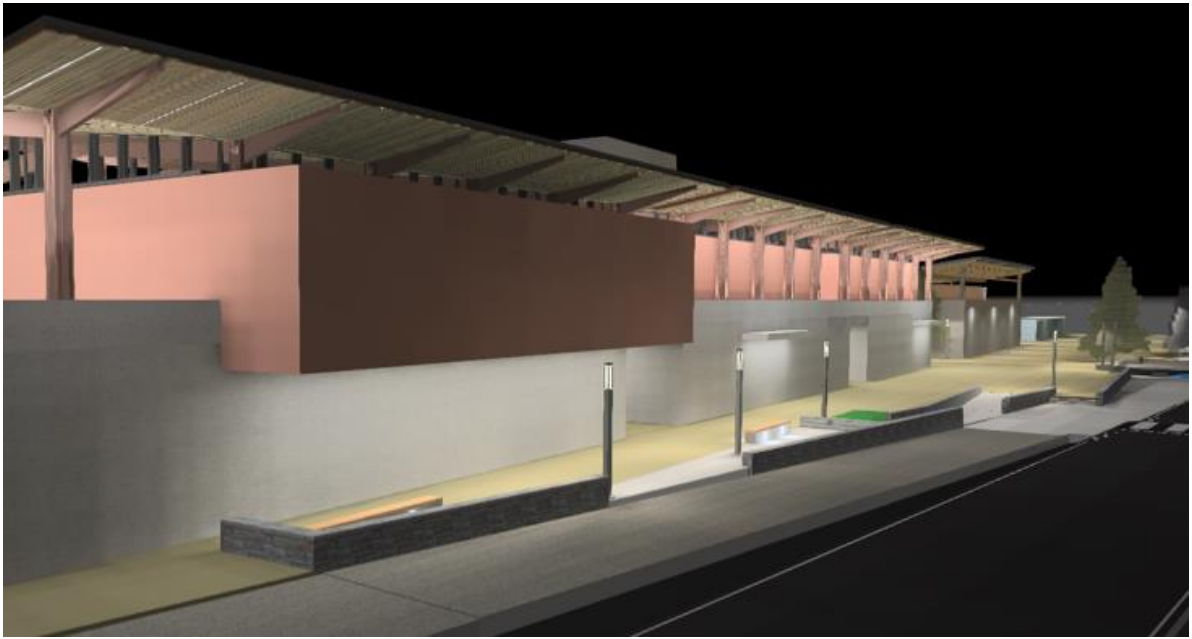


Figure 3 - Stop Point B



Figure 4 - Stop Point C



Figure 5 - Stop Point C

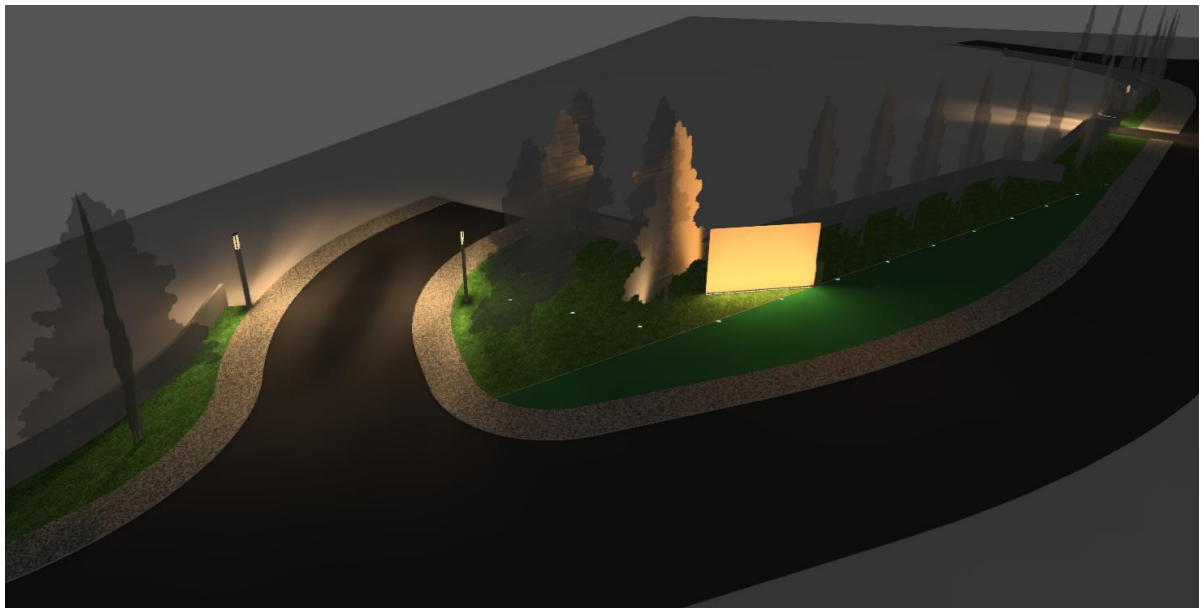


Figure 6 - Stop Point D

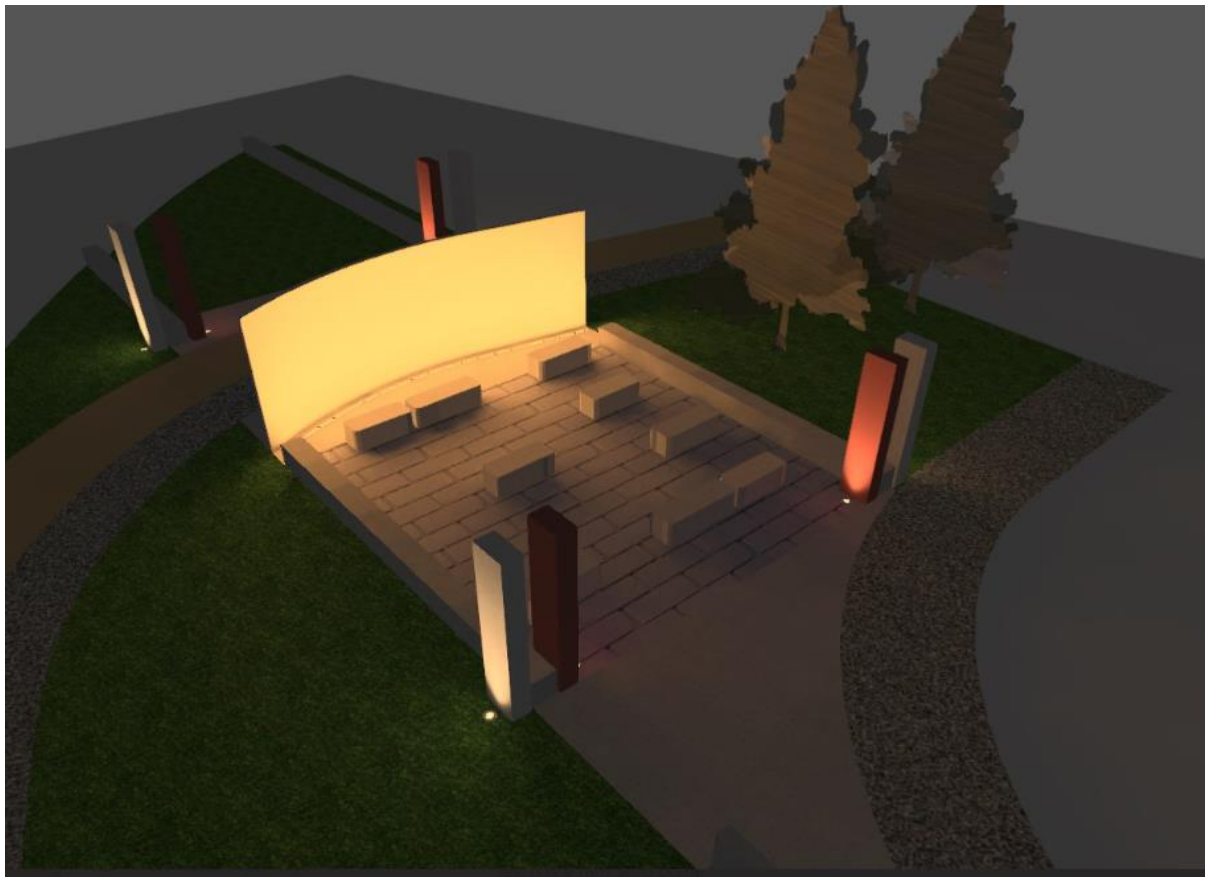


Figure 7 – Character Area

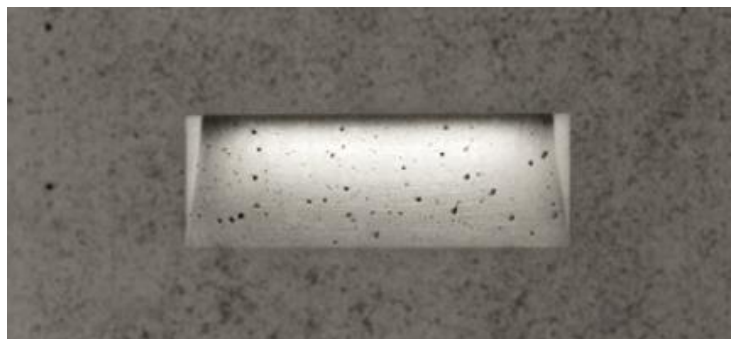
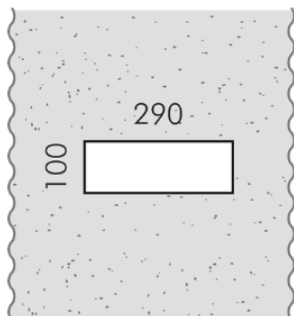
3.6 Proposed Luminaire Types



SMARTLEDFLEX – MCI IP67 IK10 – Length to suit x 16mm x 17mm - Location: Stop Point B



COLORADO 8.0 – Luce & Light IP69 IK10 - 632mm x 94mm x 118mm - Location: Character Area, Stop Point D



Ghost Horizontal - SIMES IP65 IK10 - 100mm x 290mm - Location: Stop Points



STRA-Luce & Light IP68 IK10 - Location: Stop Points



Einsatz Reno Elements - HESS IP65 IK9 - 4500mm x 320mm x 160mm

Location: Stop Points,

4.0 Appendix 1 – Drawing Register: Active Travel Route Concept Lighting

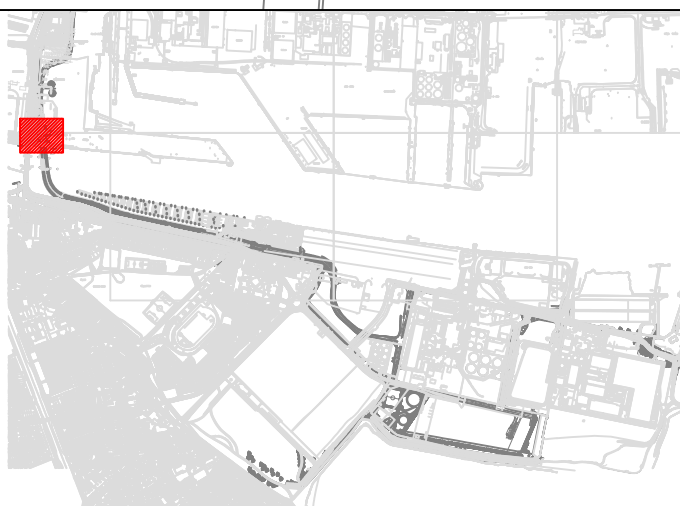
JOB		JOB NUMBER												
3FM Project		1036912										XXXX		
Concept Lighting Drawings: Active Travel Route		DATE OF ISSUE												
		DAY	1											
		MONTH	07											
		YEAR	24											
		FORMAT	E											
P=POST D=CD E=EMAIL H=HAND F=FAX U=UPLOAD TO FTP/PROJECT DATA SITE														
DRAWING TITLE	DRAWING NUMBER	DRG SIZE	SCALE	REVISION										
Stop Point Drawings														
Active Travel Route - Stop Point A - Concept Lighting Design	1036912-CDL-ZZ-00-DR-E-39001	A1	1:200	PL01										
Active Travel Route - Stop Point B - Concept Lighting Design	1036912-CDL-ZZ-00-DR-E-39002	A1	1:200	PL01										
Active Travel Route - Stop Point C - Concept Lighting Design	1036912-CDL-ZZ-00-DR-E-39003	A1	1:100	PL01										
Active Travel Route - Stop Point D - Concept Lighting Design	1036912-CDL-ZZ-00-DR-E-39004	A1	1:200	PL01										
Active Travel Route - Intermediate Stop Point - Concept Lighting Design	1036912-CDL-ZZ-00-DR-E-39005	A1	1:200	PL01										
Active Travel Route - Character area - Concept Lighting Design	1036912-CDL-ZZ-00-DR-E-39006	A1	1:200	PL01										
Stop Point Documents														
3FM Project - Active Travel Route - Concept Lighting Planning Report	3FM-CDL-ZZ-XX-RP-E-15202													
PURPOSE OF ISSUE					PL									
I = INFORMATION, T = TENDER ISSUE, CI = CONSTRUCTION ISSUE, P = PRELIMINARY														
CT = CONTRACT A = AS BUILT FC = FOR COMMENT, PL = PLANNING														
ISSUED TO:														
PLANNING AUTHORITY	AN BORD PLEANÁLA													
COPIES	DUBLIN CITY COUNCIL, DUBLIN PORT COMPANY													

5.0 Appendix 2 – Planning Drawings: Active Travel Route Concept Lighting



A1

- NOTES:**
- THIS DRAWING SHALL BE READ IN CONJUNCTION WITH ALL RELEVANT ARCHITECTURAL, STRUCTURAL AND ENGINEERING SERVICES DRAWINGS, SPECIFICATIONS, SCHEDULES AND PROJECT SPECIFIC DOCUMENTS.
 - ALL PLANT AND EQUIPMENT IS TO BE INSTALLED TO MANUFACTURER'S RECOMMENDATIONS, ALLOWING FULL ACCESS FOR COMMISSIONING, MAINTENANCE AND REMOVAL/REPLACEMENT.
 - ALL DIMENSIONS IN mm UNLESS OTHERWISE STATED.
 - DO NOT SCALE FROM THIS DRAWING.
 - FOR SYMBOLS SEE DRAWING XXXX(X)XXXX.



- STOP POINT LEGEND:**
- 1 KASSIO BOLLARD
 - 2 SIMES S.P.A. GHOST RECESSED WALL LIGHT
 - 4 RENO HESS POLE LIGHT 180 DEGREES
 - 5 RENO ELEMENTS HESS POLE LIGHT 360 DEGREES
 - 10 STRA 2.0 INGROUND UPLIGHT
 - 21 RECESSED SMARLED FLEX STRIP LIGHT
 - 22 COLORADO 8.0 INGROUND STRIP LIGHT

Based on:
 Architects Drg No.
 Structural Drg No.
 Survey Drg No.
 Other Drg No.
 Other Drg No.

Rev
 Rev
 Rev
 Rev

THIS DRAWING MAY INDICATE ELEMENTS RELATED TO FIRE SYSTEMS. THESE ARE INDICATIVE ONLY AND FINAL NUMBER, POSITIONING AND PERFORMANCE MUST BE ESTABLISHED AS PART OF THE CDP WORKS TO MAINTAIN THE INTENT OF THE DESIGN FIRE STRATEGY.

Issue	Date	Description	GP	DK	WD
PL01	01/07/24	LIGHTING CONCEPT			

Project
3FM PROJECT

Client
DUBLIN PORT COMPANY LTD.

Drawing Status
PL01

Title
**ACTIVE TRAVEL ROUTE
 STOP POINT A
 CONCEPT LIGHTING DESIGN**

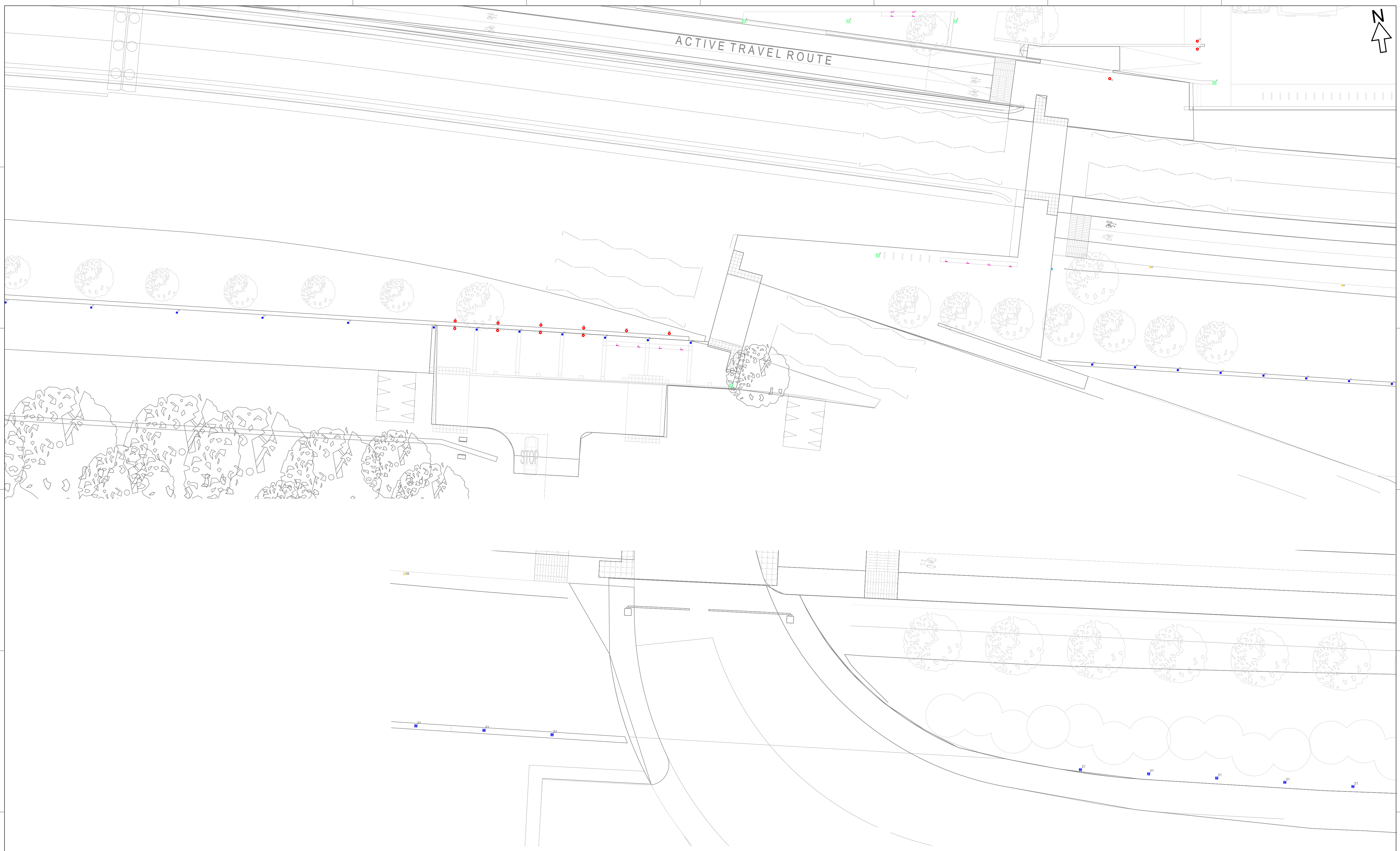
Project No.
1038937

Scale
1:200

Drawing No.
1036912-CDL-ZZ-00-DR-E-39001

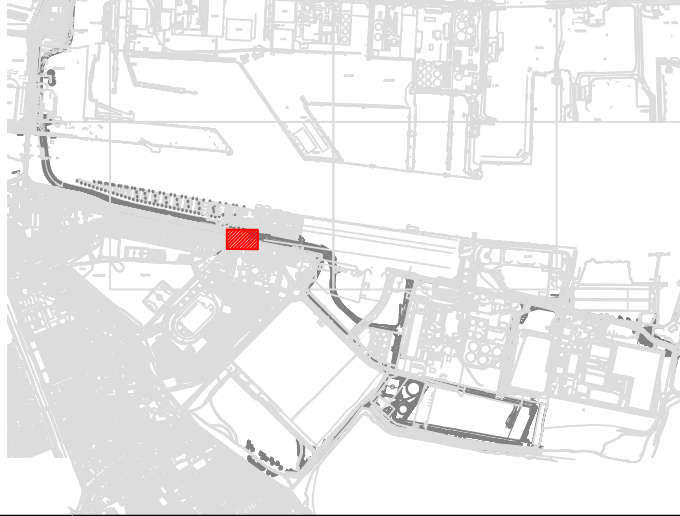
CUNDALL

2 Dawson Street,
 Dublin, Ireland,
 D02 VK75
 Tel: +353 (0)1 513 7120
 Website: www.cundall.com



A1

NOTES:
 1. THIS DRAWING SHALL BE READ IN CONJUNCTION WITH ALL RELEVANT ARCHITECTURAL, STRUCTURAL AND ENGINEERING SERVICES DRAWINGS, SPECIFICATIONS, SCHEDULES AND PROJECT SPECIFIC DOCUMENTS.
 2. ALL PLANT AND EQUIPMENT IS TO BE INSTALLED TO MANUFACTURER'S RECOMMENDATIONS, ALLOWING FULL ACCESS FOR COMMISSIONING, MAINTENANCE AND REMOVAL/REPLACEMENT.
 3. ALL DIMENSIONS IN mm UNLESS OTHERWISE STATED.
 4. DO NOT SCALE FROM THIS DRAWING.
 5. FOR SYMBOLS SEE DRAWING XXXX(X)XXXX.



STOP POINT LEGEND:

	1	KASSIO BOLLARD
	2	SIMES S.P.A. GHOST RECESSED WALL LIGHT
	4	RENO HESS POLE LIGHT 180 DEGREES
	5	RENO ELEMENTS HESS POLE LIGHT 360 DEGREES
	10	STRA 2.0 INGROUND UPLIGHT
	21	RECESSED SMARLEDFLEX STRIP LIGHT
	22	COLORADO 8.0 INGROUND STRIP LIGHT

Based on:
 Architects Drg No.
 Structural Drg No.
 Survey Drg No.
 Other Drg No.
 Other Drg No.

Rev
 Rev
 Rev
 Rev

THIS DRAWING MAY INDICATE ELEMENTS RELATED TO FIRE SYSTEMS. THESE ARE INDICATIVE ONLY AND FINAL NUMBER, POSITIONING AND PERFORMANCE MUST BE ESTABLISHED AS PART OF THE CDP WORKS TO MAINTAIN THE INTENT OF THE DESIGN FIRE STRATEGY.

Issue	Date	Description	By	Chkd	Verfd
PL01	01/07/24	LIGHTING CONCEPT	GP	DK	WD

Project	3FM PROJECT
Client	DUBLIN PORT COMPANY LTD.
Drawing Status	PL01

Title		ACTIVE TRAVEL ROUTE STOP POINT B CONCEPT LIGHTING DESIGN
Project No.	1038937	Scale
Drawing No.		1036912-CDL-ZZ-00-DR-E-39002

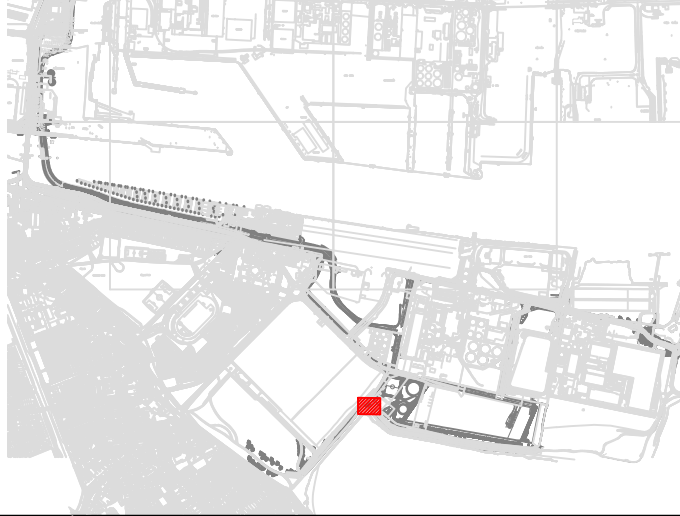
CUNDALL

2 Dawson Street,
 Dublin, Ireland,
 D02 VK75
 Tel: +353 (0)1 513 7120
 Website: www.cundall.com



A1

- NOTES:**
1. THIS DRAWING SHALL BE READ IN CONJUNCTION WITH ALL RELEVANT ARCHITECTURAL, STRUCTURAL AND ENGINEERING SERVICES DRAWINGS, SPECIFICATIONS, SCHEDULES AND PROJECT SPECIFIC DOCUMENTS.
 2. ALL PLANT AND EQUIPMENT IS TO BE INSTALLED TO MANUFACTURER'S RECOMMENDATIONS, ALLOWING FULL ACCESS FOR COMMISSIONING, MAINTENANCE AND REMOVAL/REPLACEMENT.
 3. ALL DIMENSIONS IN mm UNLESS OTHERWISE STATED.
 4. DO NOT SCALE FROM THIS DRAWING.
 5. FOR SYMBOLS SEE DRAWING XXXX(X)XXXX.



- STOP POINT LEGEND:**
- 1 KASSIO BOLLARD
 - 2 SIMES S.P.A. GHOST RECESSED WALL LIGHT
 - 4 RENO HESS POLE LIGHT 180 DEGREES
 - 5 RENO ELEMENTS HESS POLE LIGHT 360 DEGREES
 - 10 STRA 2.0 INGROUND UPLIGHT
 - 21 RECESSED SMARLEDFLEX STRIP LIGHT
 - 22 COLORADO 8.0 INGROUND STRIP LIGHT

Based on:
 Architects Drg No.
 Structural Drg No.
 Survey Drg No.
 Other Drg No.
 Other Drg No.

Rev
 Rev
 Rev
 Rev

THIS DRAWING MAY INDICATE ELEMENTS RELATED TO FIRE SYSTEMS. THESE ARE INDICATIVE ONLY AND FINAL NUMBER, POSITIONING AND PERFORMANCE MUST BE ESTABLISHED AS PART OF THE CDP WORKS TO MAINTAIN THE INTENT OF THE DESIGN FIRE STRATEGY.

PL01	01/07/24	LIGHTING CONCEPT	GP	DK	WD
Issue	Date	Description	By	Chkd	Verfd

Project
 3FM PROJECT

Client
 DUBLIN PORT COMPANY LTD.

Drawing Status
 PL01

Title
 ACTIVE TRAVEL ROUTE
 STOP POINT C
 CONCEPT LIGHTING DESIGN

Project No.
 1038937

Scale
 1:100

Drawing No.
 1036912-CDL-ZZ-00-DR-E-39003

CUNDALL

2 Dawson Street,
 Dublin, Ireland,
 D02 VK75
 Tel: +353 (0)1 513 7120
 Website: www.cundall.com



A1

NOTES:
 1. THIS DRAWING SHALL BE READ IN CONJUNCTION WITH ALL RELEVANT ARCHITECTURAL, STRUCTURAL AND ENGINEERING SERVICES DRAWINGS, SPECIFICATIONS, SCHEDULES AND PROJECT SPECIFIC DOCUMENTS.
 2. ALL PLANT AND EQUIPMENT IS TO BE INSTALLED TO MANUFACTURER'S RECOMMENDATIONS, ALLOWING FULL ACCESS FOR COMMISSIONING, MAINTENANCE AND REMOVAL/REPLACEMENT.
 3. ALL DIMENSIONS IN mm UNLESS OTHERWISE STATED.
 4. DO NOT SCALE FROM THIS DRAWING.
 5. FOR SYMBOLS SEE DRAWING XXXX(XX)XXXX.



STOP POINT LEGEND:

1	KASSIO BOLLARD
2	SIMES S.P.A. GHOST RECESSED WALL LIGHT
4	RENO HESS POLE LIGHT 180 DEGREES
5	RENO ELEMENTS HESS POLE LIGHT 360 DEGREES
10	STRA 2.0 INGROUND UPLIGHT
21	RECESSED SMARLEDFLEX STRIP LIGHT
22	COLORADO 8.0 INGROUND STRIP LIGHT

Project	3FM PROJECT
Client	DUBLIN PORT COMPANY LTD.
Drawing Status	PL01

Title		ACTIVE TRAVEL ROUTE STOP POINT D CONCEPT LIGHTING DESIGN
Project No.	1038937	Scale
Drawing No.		1036912-CDL-ZZ-00-DR-E-39004

CUNDALL

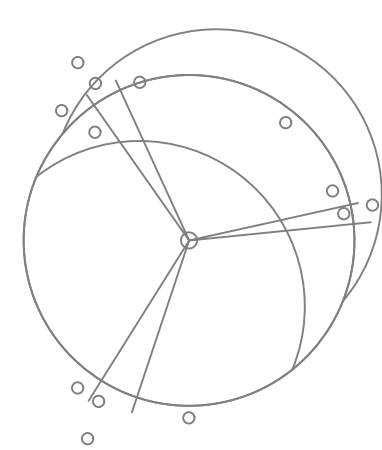
2 Dawson Street,
 Dublin, Ireland,
 D02 VK75
 Tel: +353 (0)1 513 7120
 Website: www.cundall.com

Based on:
 Architects Drg No.
 Structural Drg No.
 Survey Drg No.
 Other Drg No.
 Other Drg No.

Rev
 Rev
 Rev
 Rev

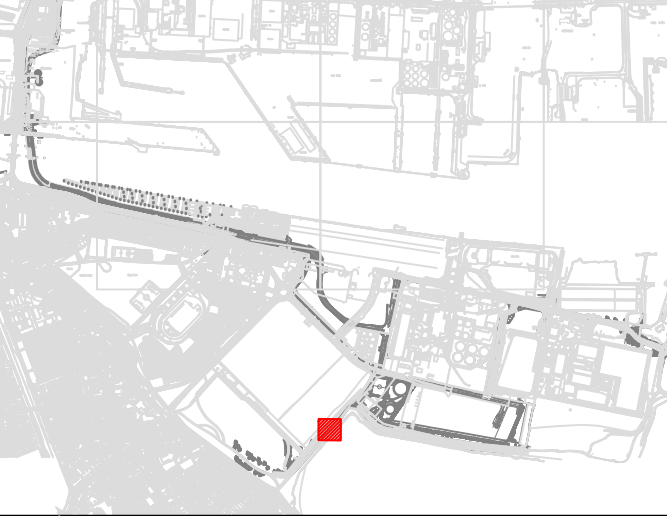
THIS DRAWING MAY INDICATE ELEMENTS RELATED TO FIRE SYSTEMS. THESE ARE INDICATIVE ONLY AND FINAL NUMBER, POSITIONING AND PERFORMANCE MUST BE ESTABLISHED AS PART OF THE CDP WORKS TO MAINTAIN THE INTENT OF THE DESIGN FIRE STRATEGY.

Issue	Date	Description	GP	DK	WD
PL01	01/07/24	LIGHTING CONCEPT			
			By	Chkd	Verfd



A1

NOTES:
 1. THIS DRAWING SHALL BE READ IN CONJUNCTION WITH ALL RELEVANT ARCHITECTURAL, STRUCTURAL AND ENGINEERING SERVICES DRAWINGS, SPECIFICATIONS, SCHEDULES AND PROJECT SPECIFIC DOCUMENTS.
 2. ALL PLANT AND EQUIPMENT IS TO BE INSTALLED TO MANUFACTURER'S RECOMMENDATIONS, ALLOWING FULL ACCESS FOR COMMISSIONING, MAINTENANCE AND REMOVAL/REPLACEMENT.
 3. ALL DIMENSIONS IN mm UNLESS OTHERWISE STATED.
 4. DO NOT SCALE FROM THIS DRAWING.
 5. FOR SYMBOLS SEE DRAWING XXXX(XX)XXXX.



STOP POINT LEGEND:

1	KASSIO BOLLARD
2	SIMES S.P.A. GHOST RECESSED WALL LIGHT
4	RENO HESS POLE LIGHT 180 DEGREES
5	RENO ELEMENTS HESS POLE LIGHT 360 DEGREES
10	STRA 2.0 INGROUND UPLIGHT
21	RECESSED SMARLEDFLEX STRIP LIGHT
22	COLORADO 8.0 INGROUND STRIP LIGHT

Based on:
 Architects Drg No.
 Structural Drg No.
 Survey Drg No.
 Other Drg No.
 Other Drg No.

Rev
 Rev
 Rev
 Rev

THIS DRAWING MAY INDICATE ELEMENTS RELATED TO FIRE SYSTEMS. THESE ARE INDICATIVE ONLY AND FINAL NUMBER, POSITIONING AND PERFORMANCE MUST BE ESTABLISHED AS PART OF THE CDP WORKS TO MAINTAIN THE INTENT OF THE DESIGN FIRE STRATEGY.

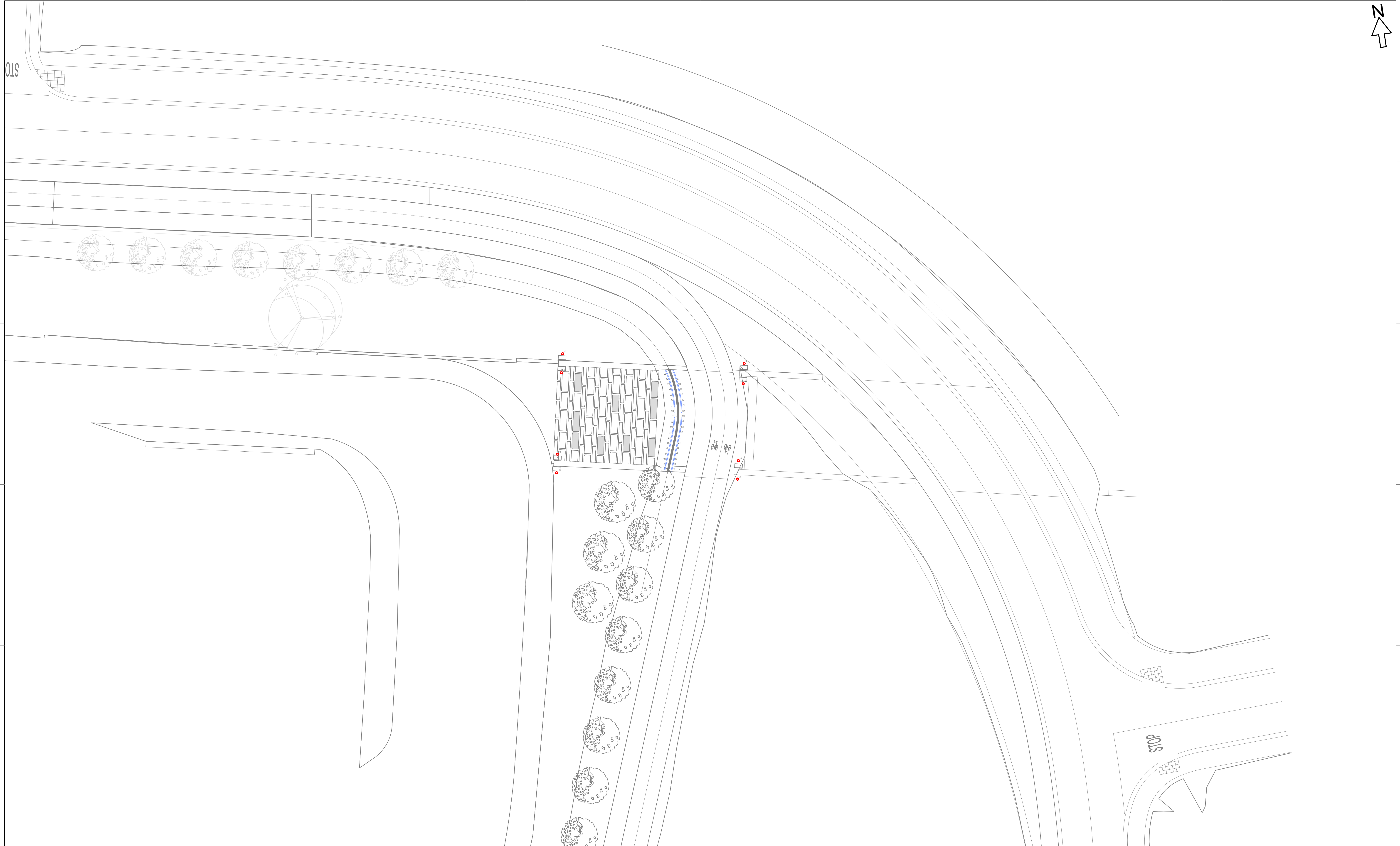
Issue	Date	Description	By	Chkd	Verfd
PL01	01/07/24	LIGHTING CONCEPT	GP	DK	WD

Project	3FM PROJECT
Client	DUBLIN PORT COMPANY LTD.
Drawing Status	PL01

Title		ACTIVE TRAVEL ROUTE INTERMEDIATE STOP POINT CONCEPT LIGHTING DESIGN
Project No.	1038937	Scale
		1:200
Drawing No.		1036912-CDL-ZZ-00-DR-E-39005

CUNDALL

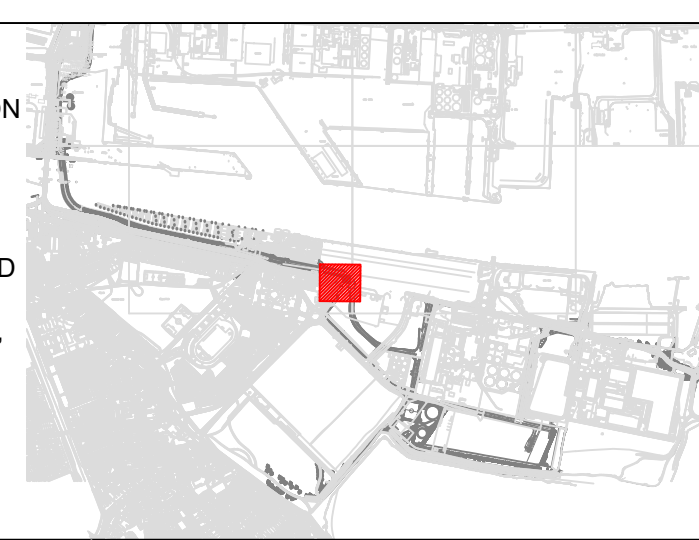
2 Dawson Street,
 Dublin, Ireland,
 D02 VK75
 Tel: +353 (0)1 513 7120
 Website: www.cundall.com



Based on: Architects Drg No. Structural Drg No. Survey Drg No. Other Drg No. Other Drg No.	A1
	Rev
	Rev
	Rev

NOTES:

- THIS DRAWING SHALL BE READ IN CONJUNCTION WITH ALL RELEVANT ARCHITECTURAL, STRUCTURAL AND ENGINEERING SERVICES DRAWINGS, SPECIFICATIONS, SCHEDULES AND PROJECT SPECIFIC DOCUMENTS.
- ALL PLANT AND EQUIPMENT IS TO BE INSTALLED TO MANUFACTURER'S RECOMMENDATIONS, ALLOWING FULL ACCESS FOR COMMISSIONING, MAINTENANCE AND REMOVAL/REPLACEMENT.
- ALL DIMENSIONS IN mm UNLESS OTHERWISE STATED.
- DO NOT SCALE FROM THIS DRAWING.
- FOR SYMBOLS SEE DRAWING XXXX(X)XXXX.



STOP POINT LEGEND:

1	KASSIO BOLLARD
2	SIMES S.P.A. GHOST RECESSED WALL LIGHT
4	RENO HESS POLE LIGHT 180 DEGREES
6	RENO ELEMENTS HESS POLE LIGHT 360 DEGREES
10	STRA 2.0 INGROUND UPLIGHT
21	RECESSED SMARLEDFLEX STRIP LIGHT
22	COLORADO 8.0 INGROUND STRIP LIGHT

PL01	01/07/24	LIGHTING CONCEPT	GP	DK	WD
Issue	Date	Description	By	Chkd	Verfd

Project	3FM PROJECT
Client	DUBLIN PORT COMPANY LTD.
Drawing Status	PL01

Title		ACTIVE TRAVEL ROUTE CHARACTER AREA CONCEPT LIGHTING DESIGN
Project No.	1038937	Scale
		1:200
Drawing No.		1036912-CDL-ZZ-00-DR-E-39006

CUNDALL

2 Dawson Street,
Dublin, Ireland,
D02 VK75
Tel: +353 (0)1 513 7120
Website: www.cundall.com

