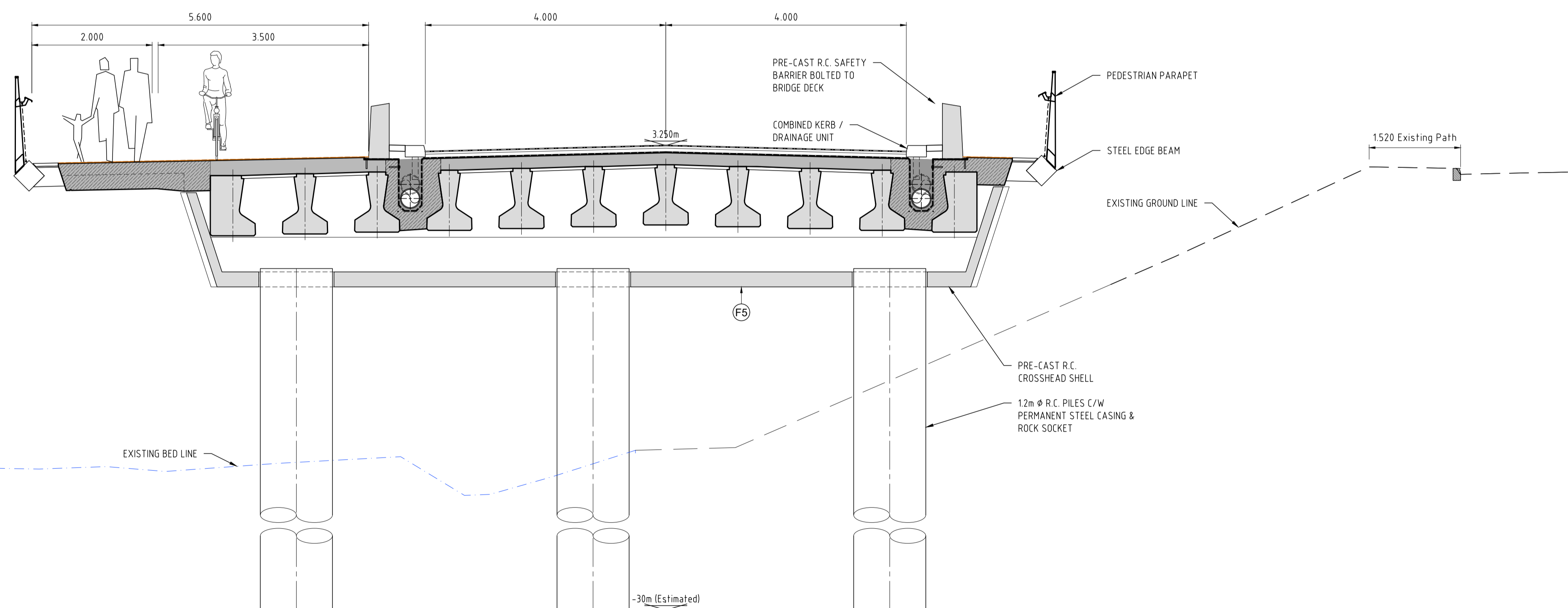


TYPICAL CROSS SECTION
(Scale 1:25)



VIADUCT SECTION 1
PIER TYPE 1 (Typical Pier)
(Scale 1:50)

- H.A.T. +4.50m C.D. [+1.99m O.D.]
- M.H.W.S. +4.10m C.D. [+1.59m O.D.]
- M.H.W.N. +3.40m C.D. [-0.89m O.D.]
- M.S.L. +2.40m C.D. [-0.11m O.D.]
- M.L.W.N. +1.50m C.D. [-1.01m O.D.]
- M.L.W.S. +0.70m C.D. [-1.81m O.D.]
- L.A.T. -0.1m C.D. [-2.61m O.D.]

RESIDUAL DESIGN HAZARDS
(The information provided below has been collected from Preconstruction Information and the RPS Design Risk Management Log)

1. Working near water/ Risk of drowning/ Engulfment in swampland.
2. Working at height.
3. Working being carried near Live Services.
4. Stability during construction/ Work involving assembly/ dismantling of heavy prefabricated components.
5. Rebar weight poses a manual handling risk. (Rebar Drg specific).
6. Inspection's involving Divers/ Diving Equipment/ Air supply, etc etc.....

R:\IE000336 - Dublin Port SPAR&D Drawings\BPCP1901-3FM-RPS-C-SBR-Via-DR-C-BR0103.dwg

Client

General Notes

(i) Hard copies, dwf and pdf will form a controlled issue of the drawing. All other formats (dwg etc.) are deemed to be an uncontrolled issue and any work carried out based on these files is at the recipients own risk. RPS will not accept any responsibility for any errors from the use of these files, either by human error by the recipient, listing of the un-dimensioned measurements, compatibility with the recipients software, and any errors arising when these files are used to aid the recipients drawing production, or setting out on site.

(ii) DO NOT SCALE, use figured dimensions only.

(iii) This drawing is the property of RPS, it is a project confidential classified document. It must not be copied used or its contents divulged without prior written consent. The needs and expectations of client and RPS must be considered when working with this drawing.

(iv) Information including topographical survey, geotechnical investigation and utility detail used in the design have been provided by others.

(v) All Levels refer to Ordnance Survey Datum, Malin Head.

Stab/Rev	Date	Dim Chk	Amendment / Issue	App
S3	May 24	DC	Issue For Approval	MM
S3	Oct 23	DC	Issue For Approval	MM

RPS
A TETRA TECH COMPANY
Innishmore,
Ballincollig,
Co. Cork, Ireland

T +353 21 4665900
W www.rpsgroup.com/ireland
E ireland@rpsgroup.com

Model File Identifier
CP1901-3FM-RPS-C-SBR-Via-DR-C-BR0000

Scale
As shown @ A1
Half @ A3

Created on
Oct. 23

Sheets
05 of 10

Project
3FMProject Bringing Dublin Port To 2040

Title
SPAR-Proposed Viaduct General Arrangement
(Sheet 5 of 10)

File Identifier
CP1901-3FM-RPS-C-SBR-Via-DR-C-BR0103 - 05

Status
S3

Rev
P02