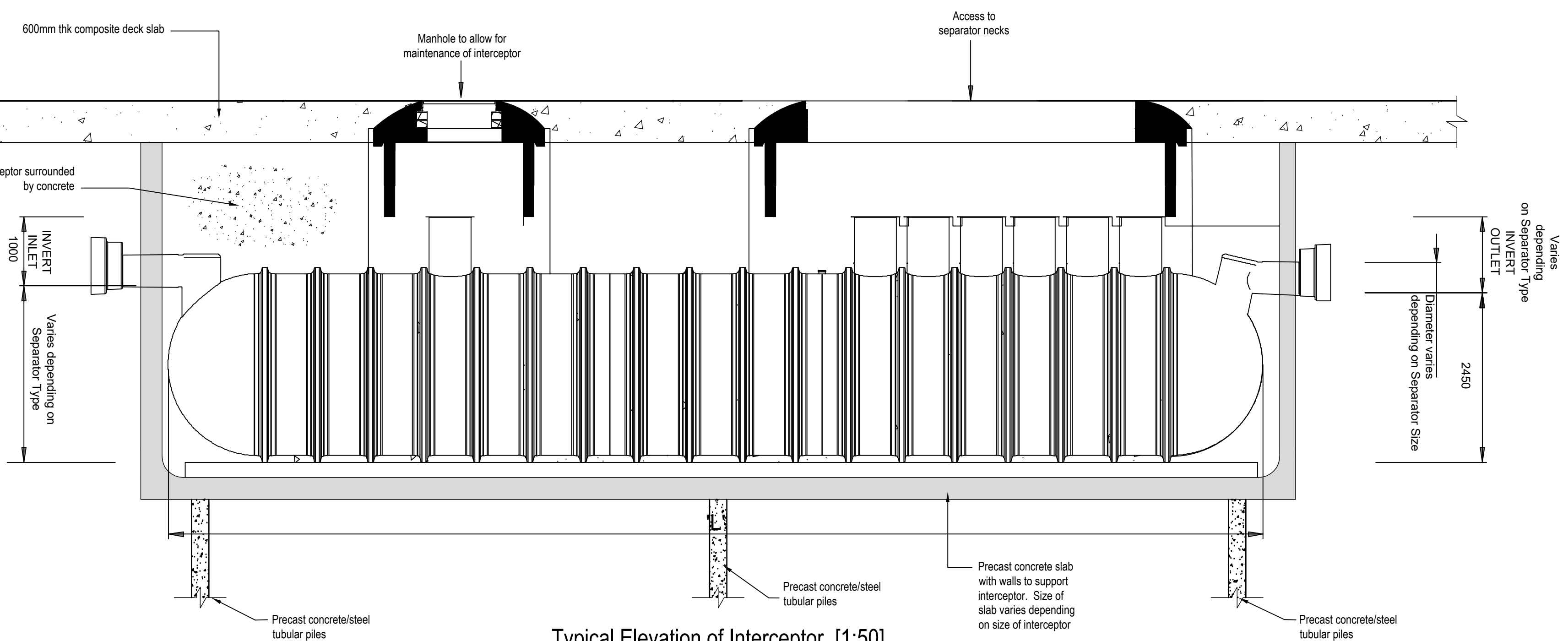
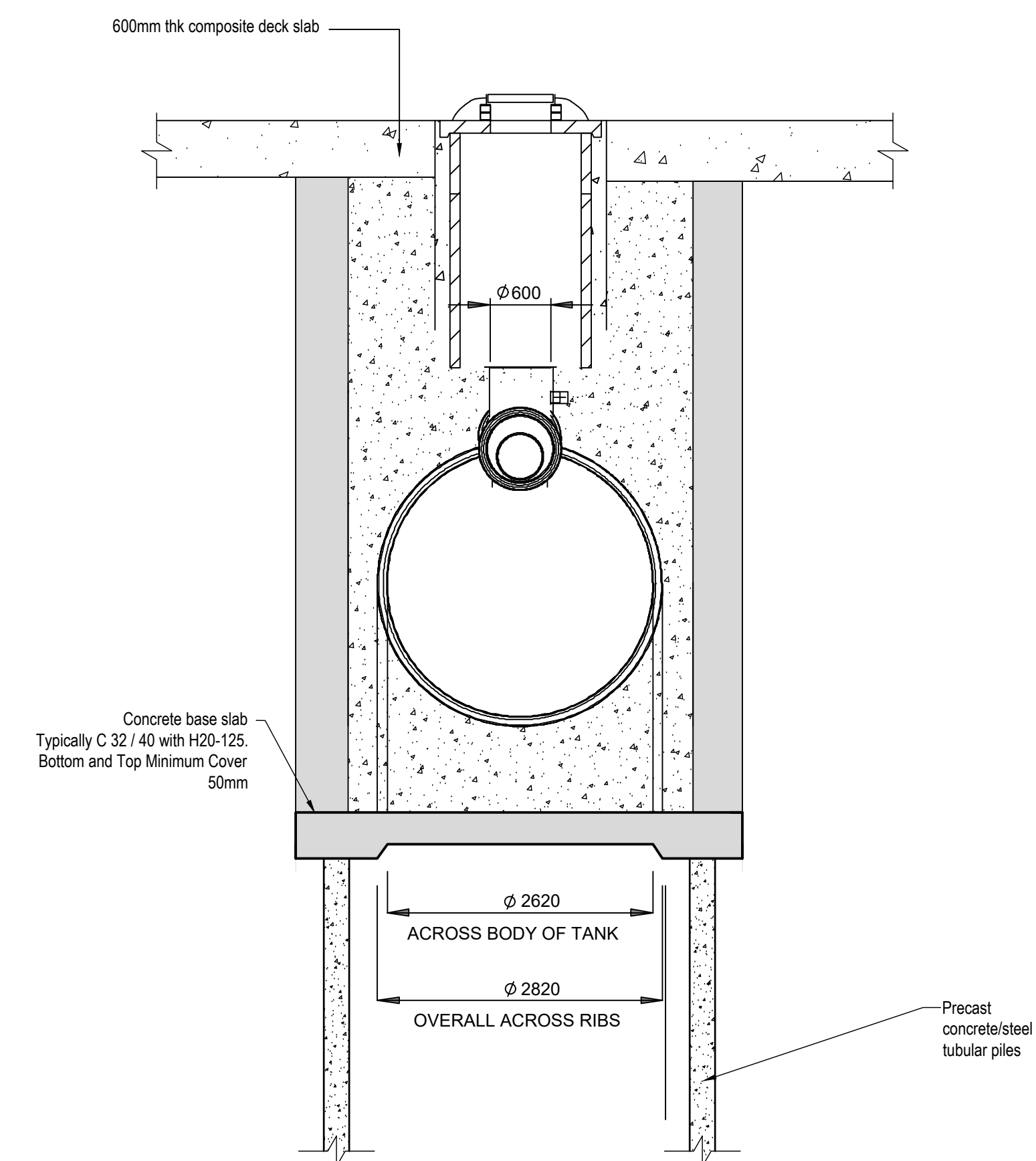


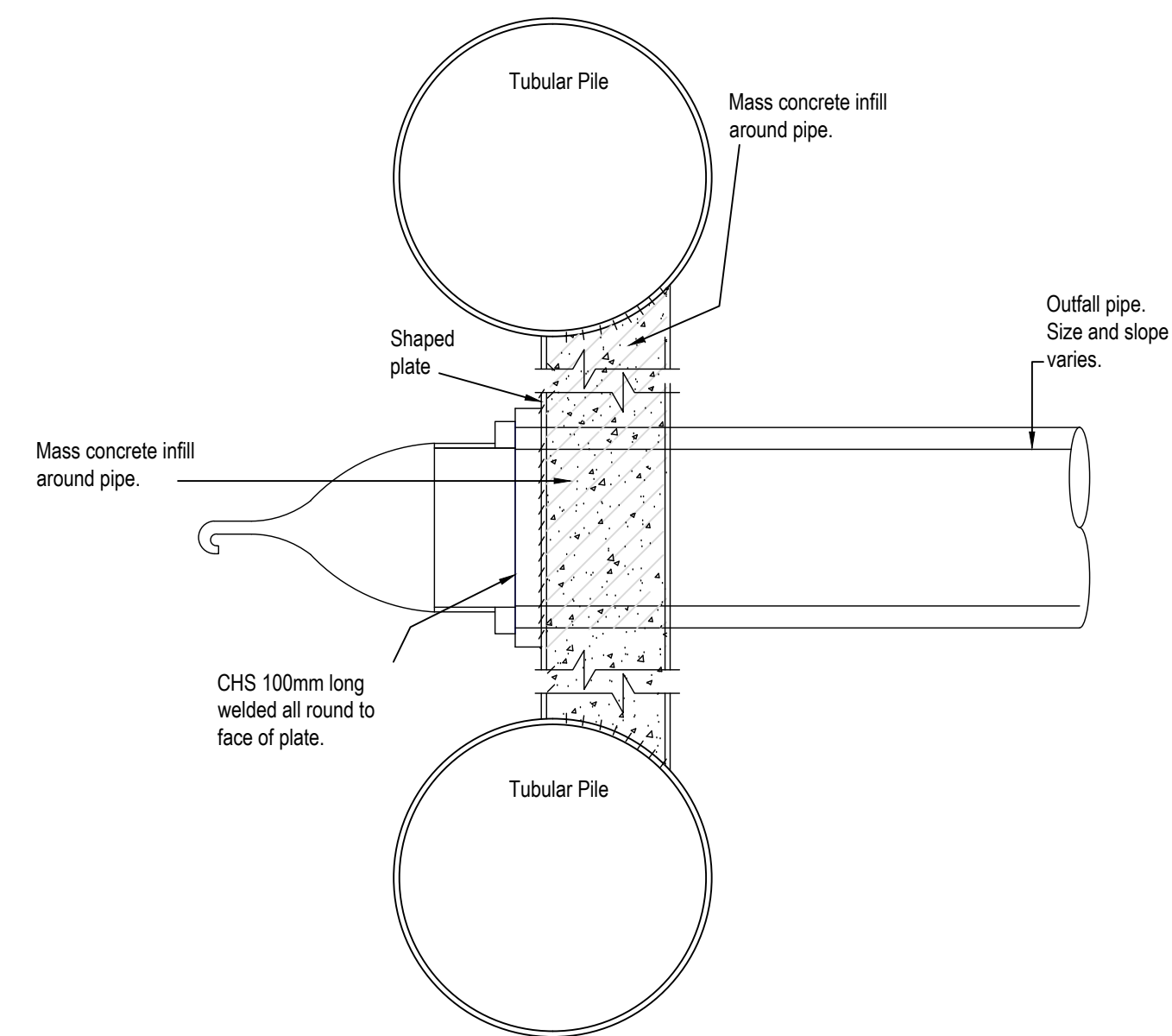
Typical Plan of Interceptor [1:50]



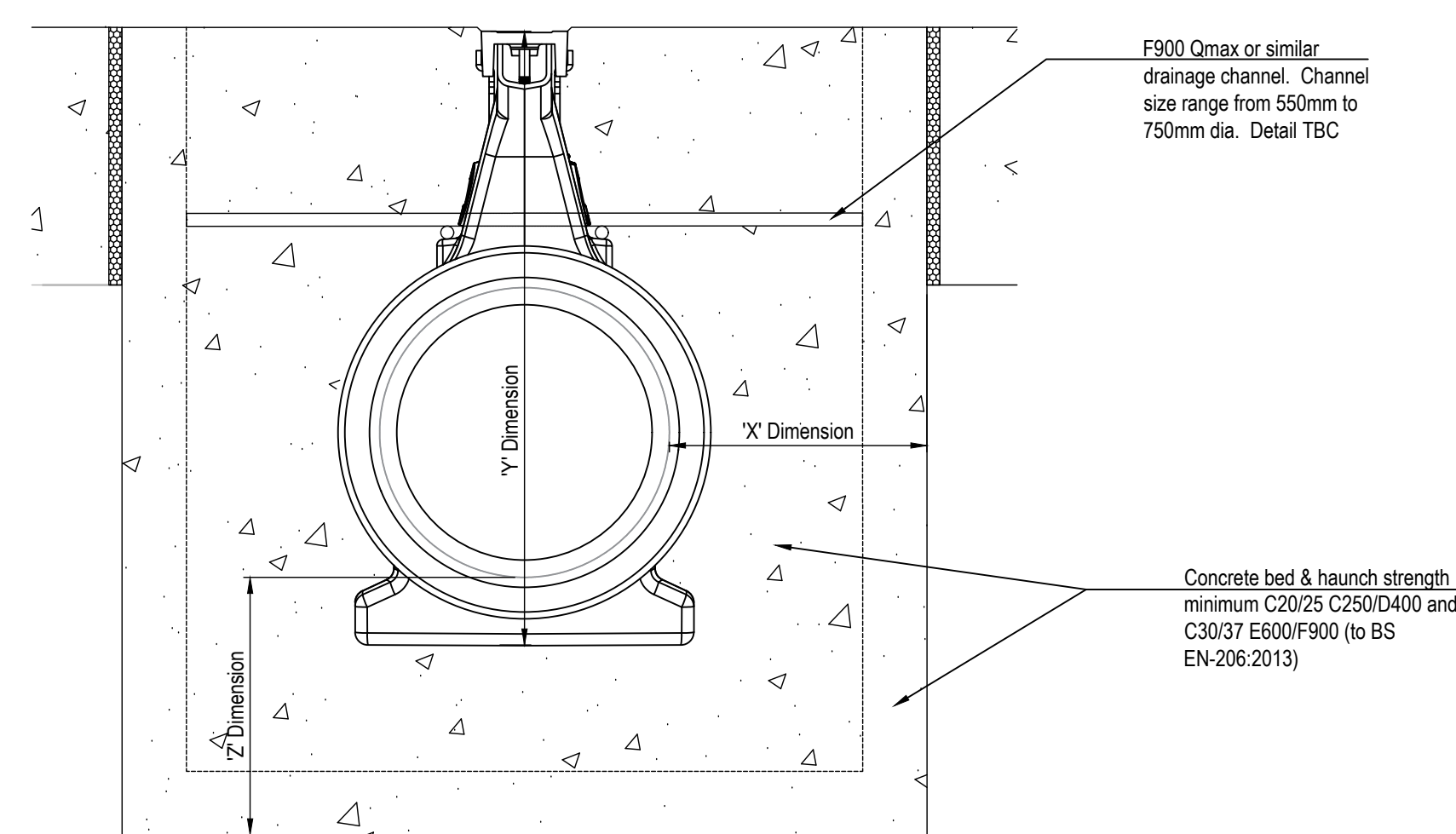
Typical Elevation of Interceptor [1:50]



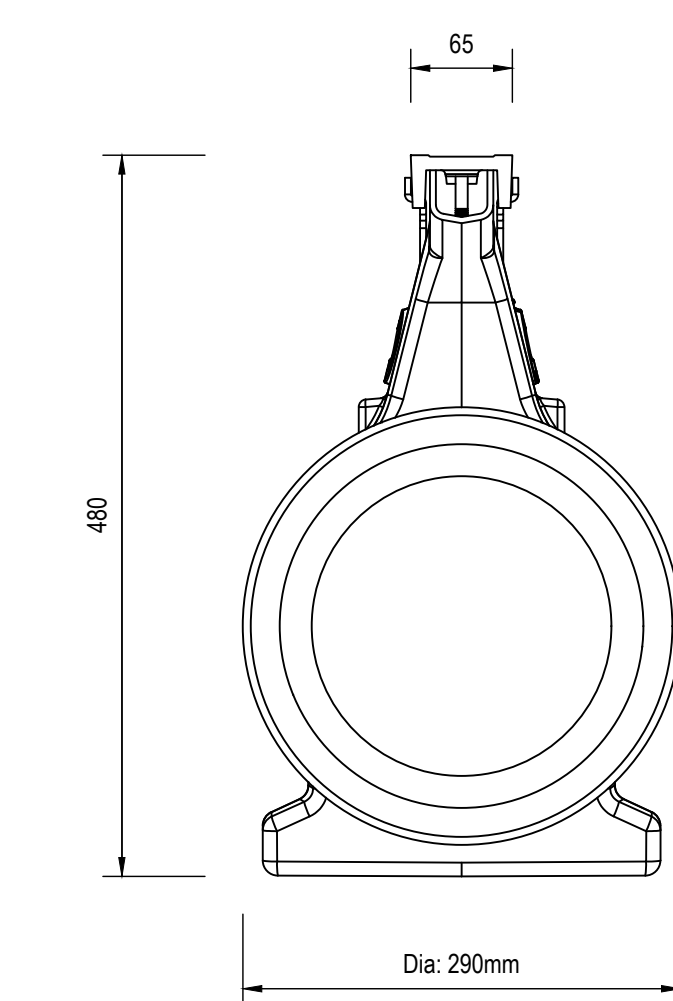
Typical Section through Open Pile Deck [1:50]



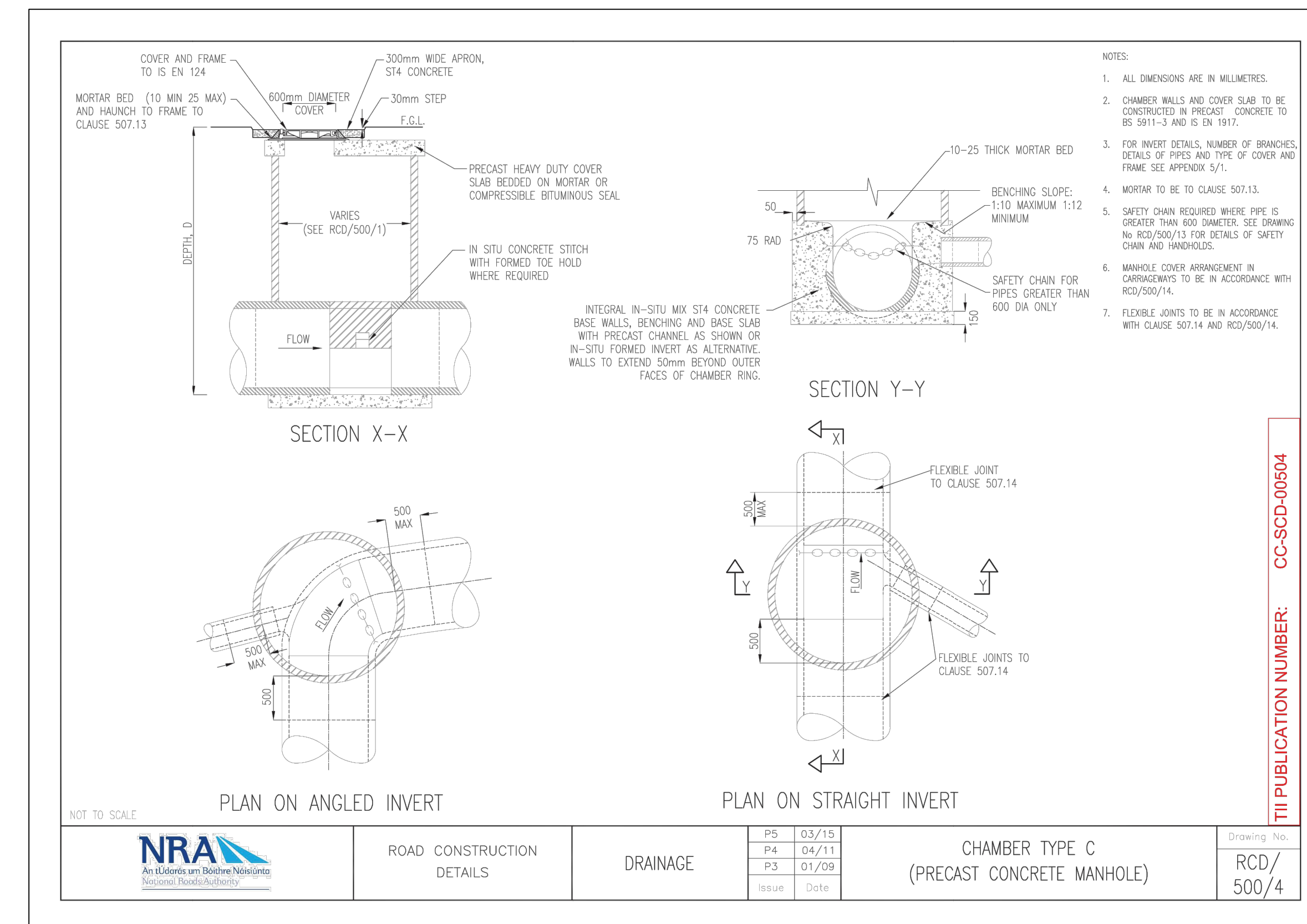
Plan showing Outfall through Open Pile Structure [1:25]



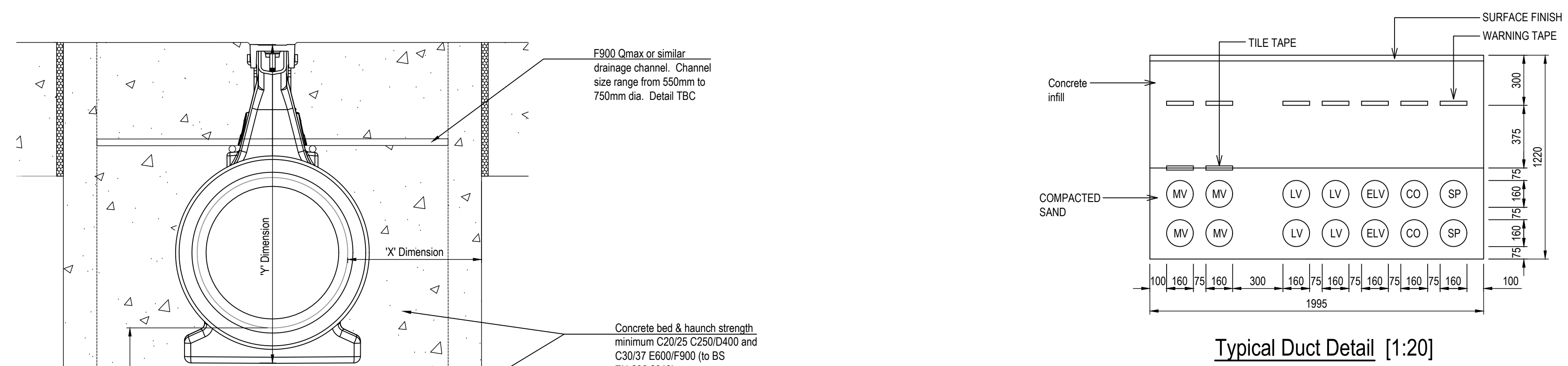
Qmax Drainage Channel: Typical Section in Composite Concrete Deck [1:5]



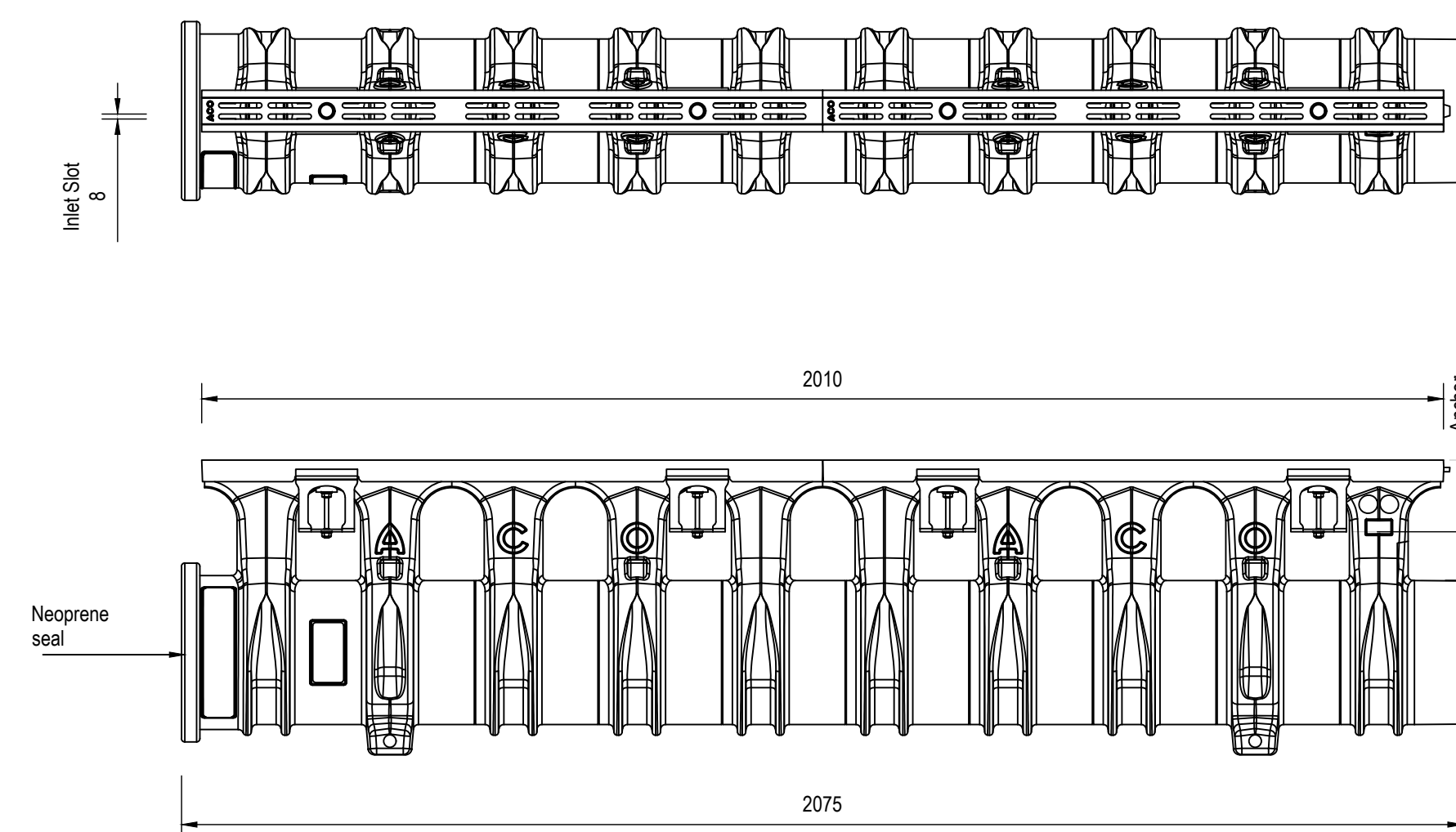
Qmax Drainage Channel: Typical Section [1:5]



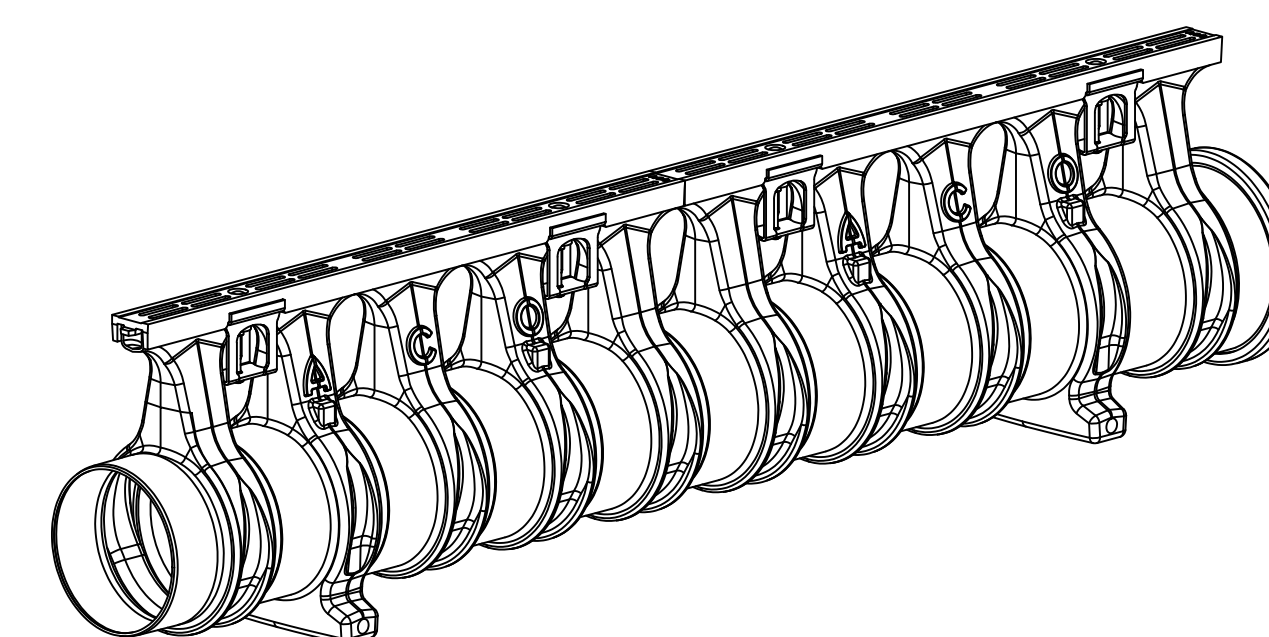
Typical Precast Concrete Manhole [Not To Scale]



Typical Duct Detail [1:20]



Qmax Drainage Channel: Typical Plan and Elevation [1:10]



Qmax Drainage Channel: Typical 3D View [1:10]

- NOTES**
1. Verifying Dimensions  
Dimensions shall be verified against such other drawings or site conditions as pertain to this part of the work.
  2. Existing Services  
Any information concerning the location of existing services indicated on this drawing is intended for general guidance only.
  3. Datum  
Ordnance Datum Malin (unless noted otherwise)
  4. ESB refers to Electricity Service Board  
CD refers to Chart Datum  
OD refers to Ordnance Datum Malin
  5. Section and elevation details refer to  
CP1901-3FM-RPS-S45-06-DR-C-0617 to 0615
  6. Proposed Drainage Layout refer to  
CP1901-3FM-RPS-S45-06-DR-C-0616
  7. All to be installed to manufacturers requirements
  8. Refer to Highways Engineering (HE) Series drawings for Proposed Approach Road details.

PM	Revised for Planning Issue	M.H.	28/06/2024
rev	amendments	check	date
		Elmwood House 74 Boulder Road Belfast BT1 2 6PZ T +44 (0) 28 30 687014 F +44 (0) 28 30 665286 W www.rpsgroup.com/ireland E ireland@rpsgroup.com	
Client			
Project			
Title Lo-Lo Container Terminal (Area N) Proposed Drainage Details			
Project Number	Sheet Size	Drawing Scale	
IBM0842	A0	As Shown	
Drawing Number CP1901-3FM-RPS-S45-06-DR-C-0619			
Drawn By	Status	Revision	
M.H.	S4	P04	
Checked By	Approved By	Date	
K.A.G.	M.McC.	20/07/2023	