

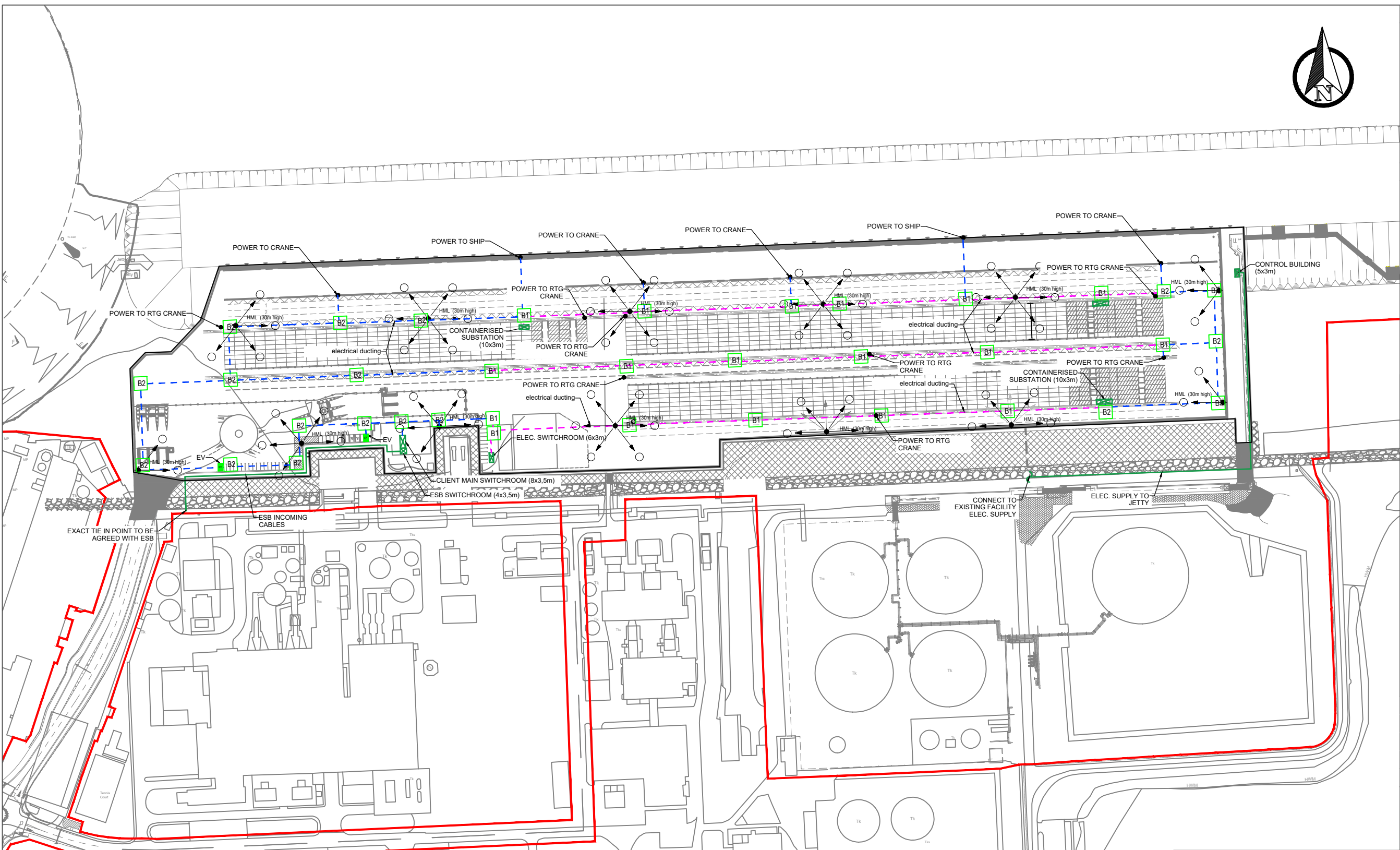


NOTES

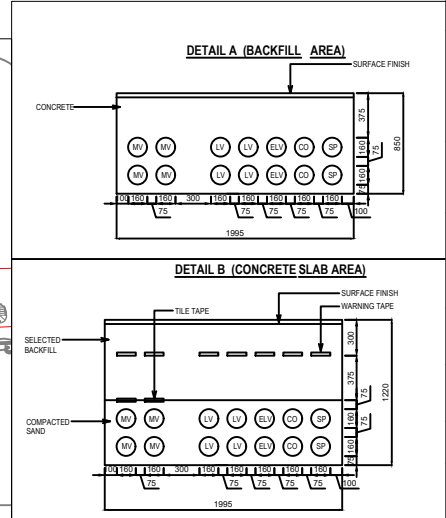
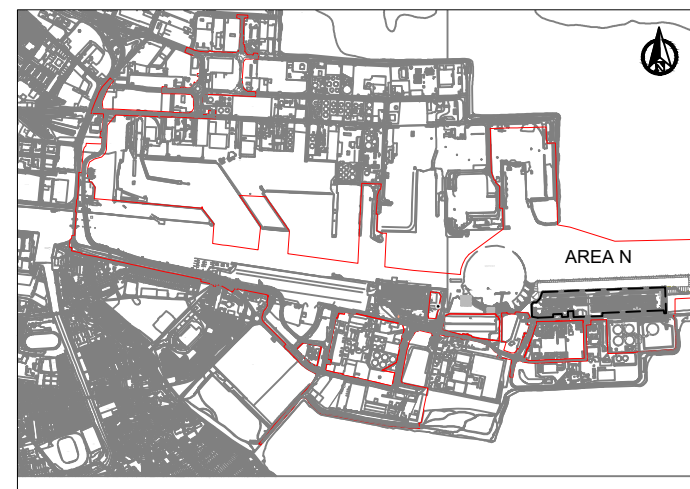
1. This document is the property of RPS. The design information contained herein is strictly confidential. This document is not to be used, reproduced, disclosed or circulated in whole or in part without the prior written permission in each instance of 'RPS'
2. Issue of Drawings. Hard copies, dxf and pdf will form a controlled issue of the drawing. All other formats (dwg, dxf etc.) are deemed to be an uncontrolled issue and any work carried out based on these files is at the recipient's own risk. RPS will not accept any responsibility for any errors arising from the use of these files, either by human error by the recipient, listing of un-dimensioned measurements, compatibility issues with the recipient's software, and any errors arising when these files are used to aid the recipient's drawing production, or setting out on site.

LEGEND

- CABLE DUCTING DETAIL A
- CABLE DUCTING DETAIL B
- B1 2m x 2m x 1.5m DEEP CABLE DRAW CHAMBER
- B2 2m x 2m x 1.25m DEEP CABLE DRAW CHAMBER
- HML HIGH MAST LIGHTING
- EV 44 NR CARPARKING SPACES. 50% OF SPACES TO BE PROVIDED WITH FULLY FUNCTIONAL EV CHARGING POINTS. REMAINING SPACES TO BE DESIGNED TO ACCOMMODATE FUTURE EV CHARGING.
- RED LINE PLANING BOUNDARY IN THIS APPLICATION
- EXTENT OF AREA N



KEY PLAN AREA N



Rev	Date	Drawn By	Checked By	Amendment / Issue	App
P02	08/05/24			Revised for Planning Issue	
P01	16/11/22			Issued for Information	

Client

 ENGINEERING
 M&S Building
 Bond Road Extension
 Dublin 3
 Tel. 00 353 1 8555771
 Fax. 00 353 1 8550487

MAKING COMPLEX EASY
 Inishmore, Ballincollig, Co Cork, Ireland.
 T +353 21 4665900
 W www.rpsgroup.com/ireland
 E ireland@rpsgroup.com

Project
 Bringing Dublin Port To 2040
 Title
 Lo-Lo Container Terminal (Area N)
 Proposed Electrical Layout

Model File Identifier
 File Identifier
 CP1901-3FM-RPS-S45-06-DR-C-0630
 Created on
 16/11/2022
 Scale
 1:1250 @ A1
 @ A3
 Sheets
 1
 Status
 S4
 Rev
 P02