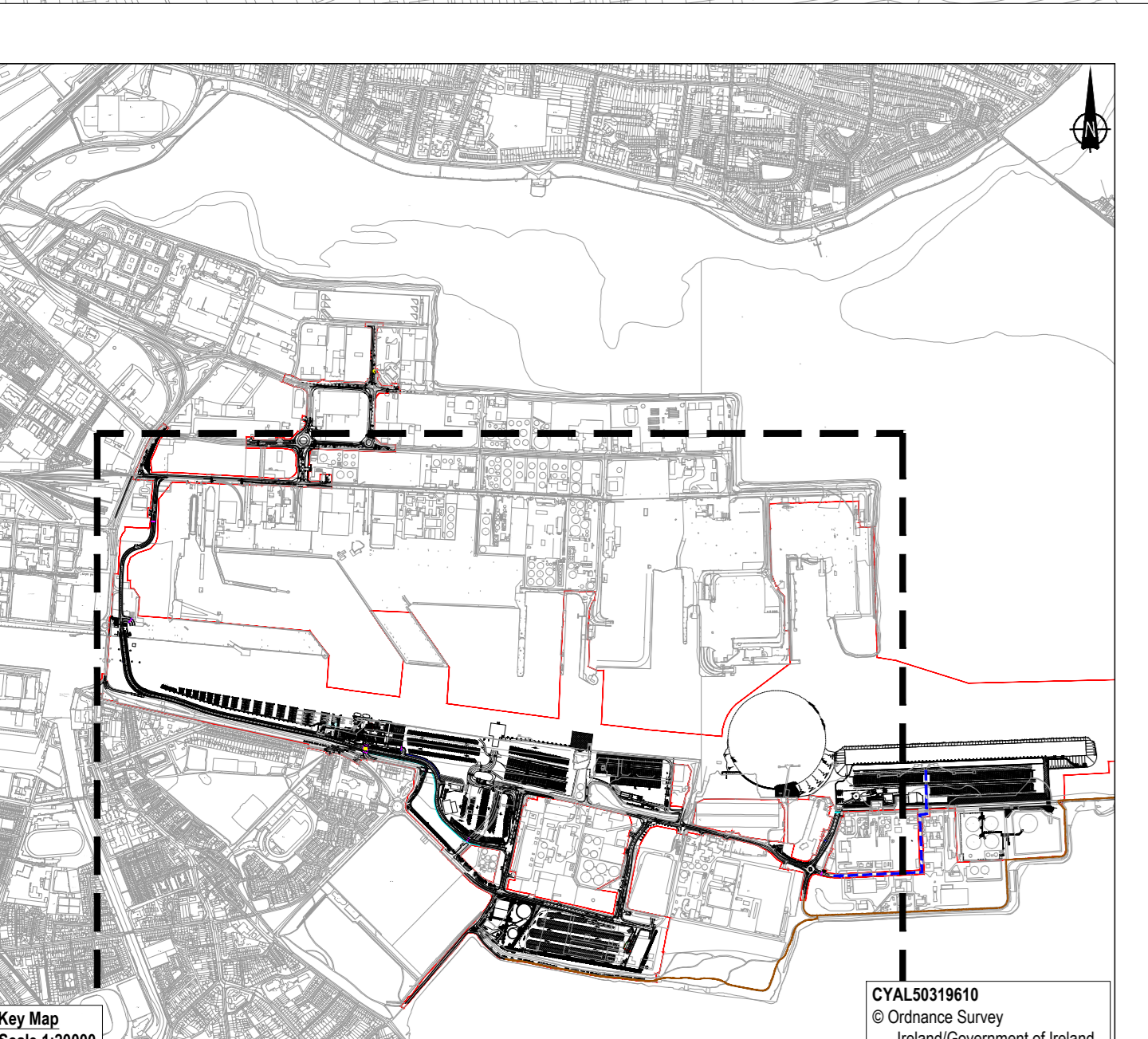
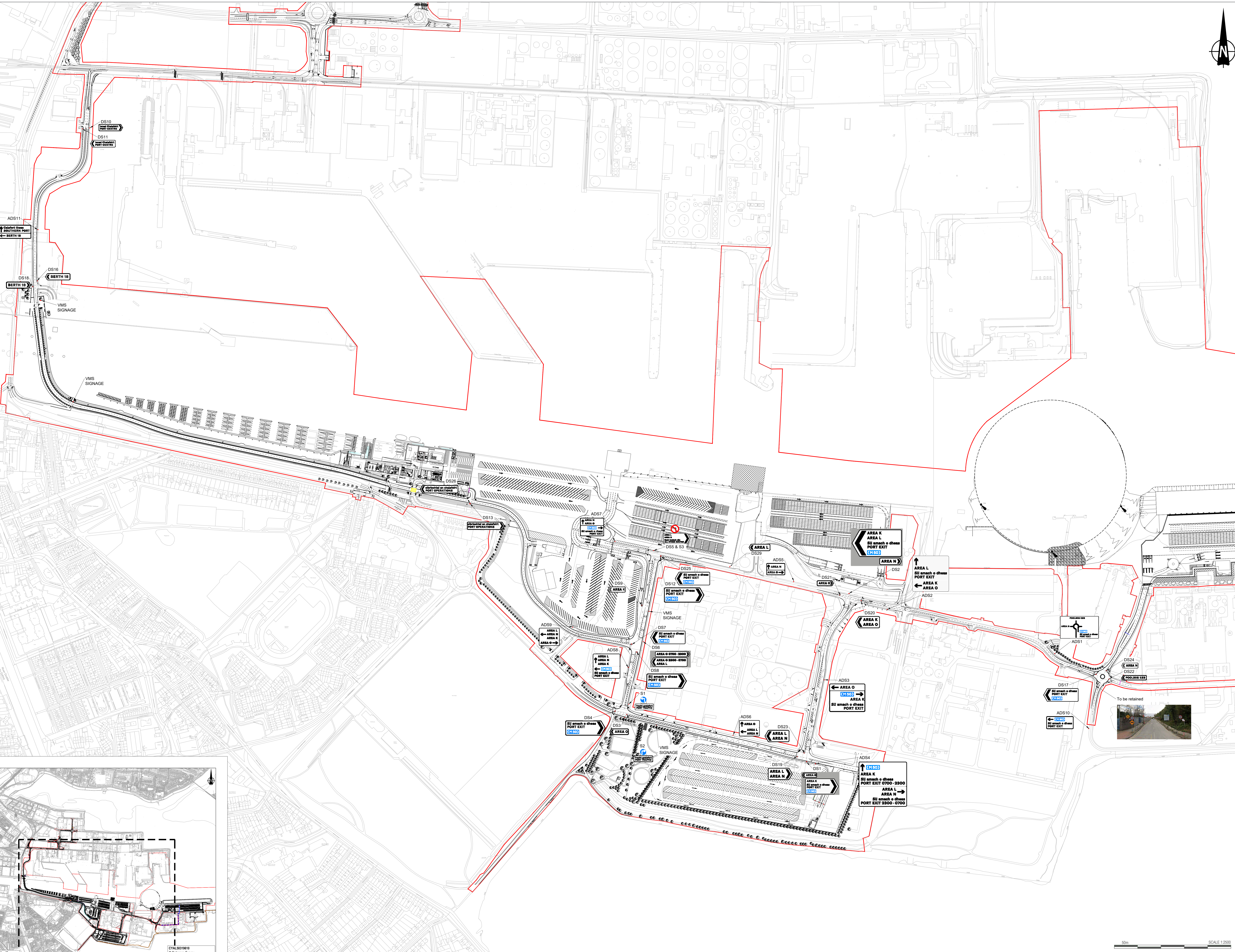


- NOTES**
- Verifying Dimensions:**
The contractor shall verify dimensions against each other drawings or site conditions as pertain to this part of the work.
 - Existing Services:**
Any information concerning the location of existing services indicated on this drawing is intended for general guidance only. It shall be the responsibility of the contractor to determine and verify the exact horizontal and vertical alignment of all cables, pipes, etc. (both underground and overhead) before work commences.
 - Issue of Drawings:**
Hard copies, pdf and ppt will form a controlled issue of the drawing. All other formats (img, dxf etc) are deemed to be uncontrolled issue and any work carried out based on these files is at the recipient's own risk. RPS will not accept any responsibility for any errors arising from the use of these files, either by human error by the recipient, listing of un-dimensioned measurements, compatibility issues with the recipient's software, and any errors arising when these files are used to aid the recipient's drawing production, or setting out on site.
 - OS Map Sheet No:**
3198-13, 3198-14, 3198-15, 3198-16, 3198-19, 3198-20, 3198-23, 3198-24, 3198-25, 3204-03, 3204-14, 3204-15, 3204-18, 3204-19, 3204-20, 3204-21, 3204-22, 3204-23, 3204-24, 3204-25, 3204-26, 3204-27, 3204-28, 3204-29, 3204-30, 3204-31, 3204-32, 3204-33, 3204-34, 3204-35, 3204-36, 3204-37, 3204-38, 3204-39, 3204-40, 3204-41, 3204-42, 3204-43, 3204-44, 3204-45, 3204-46, 3204-47, 3204-48, 3204-49, 3204-50, 3204-51, 3204-52, 3204-53, 3204-54, 3204-55, 3204-56, 3204-57, 3204-58, 3204-59, 3204-60, 3204-61, 3204-62, 3204-63, 3204-64, 3204-65, 3204-66, 3204-67, 3204-68, 3204-69, 3204-70, 3204-71, 3204-72, 3204-73, 3204-74, 3204-75, 3204-76, 3204-77, 3204-78, 3204-79, 3204-80, 3204-81, 3204-82, 3204-83, 3204-84, 3204-85, 3204-86, 3204-87, 3204-88, 3204-89, 3204-90, 3204-91, 3204-92, 3204-93, 3204-94, 3204-95, 3204-96, 3204-97, 3204-98, 3204-99, 3205-01, 3205-02, 3205-03, 3205-04, 3205-05, 3205-06, 3205-07, 3205-08, 3205-09, 3205-10, 3205-11, 3205-12, 3205-16
 - Datum:** ITM

- Existing Survey / OS Mapping
Proposed Layout
Proposed Earthmarks
Application Boundary



Key Map Scale 1:2000
CYA/0319610
© Ordnance Survey
Ireland Government of Ireland

P02	Revised for Planning Submission	SB	June 24
P01	Revised for planning	PN	02/10/23
rev	amendments	check	date

RPS
Elmwood House
74 Bourne Road
Belfast
BT12 6SC
T +44 (0) 28 90 667914
F +44 (0) 28 90 665286
W www.rpsgroup.com/ireland
E ireland@rpsgroup.com

Client
**COMHLACHT CHALFORT
ATHA CLIAITH
DUBLIN PORT COMPANY**

Project
3FMProject

Title
Roads & Footways (Southern & Spar);
Proposed Signage Strategy
Sheet 1 of 1

Project Number	Sheet Size	Drawing Scale
IBH0796	A0	1:2500

Drawing Number
CP1901_3FM-RPS_26-HSN-XX-DR-HE-1200-0005

Drawn By	Status	Revision
CH	S4	P02

Checked By	Approved By	Date
PN	CD	26/06/23

50m SCALE 1:2500