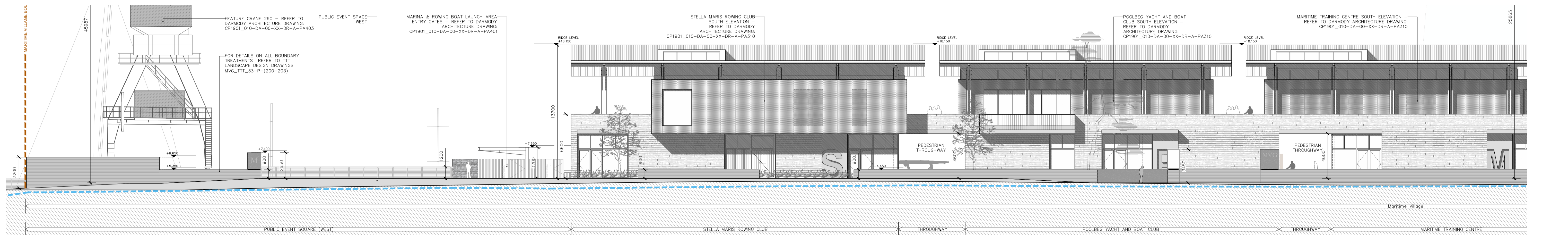
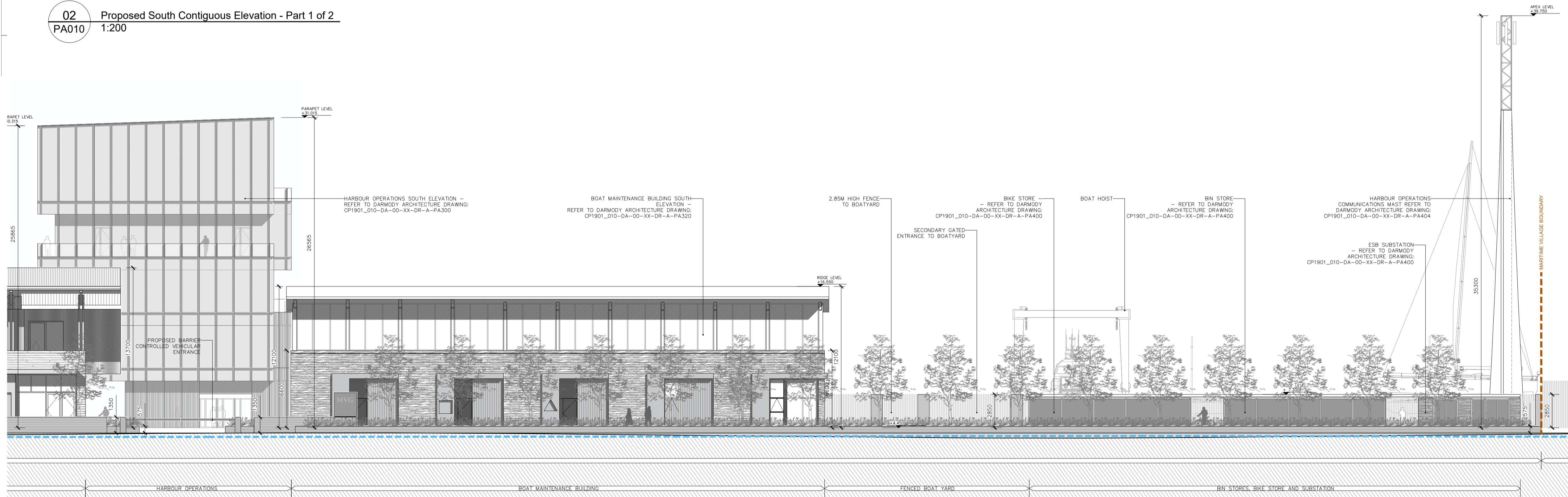


01 Proposed South Contiguous Elevation
PA010 1:500



02 Proposed South Contiguous Elevation - Part 1 of 2
PA010 1:200



03 Proposed South Contiguous Elevation - Part 2 of 2
PA010 1:200

ISSUED FOR PLANNING ONLY, NOT FOR CONSTRUCTION

NOTES:
Do not scale from this drawing.
Any discrepancies found on site to be reported to Darmody Architects immediately.
Any discrepancies found on drawings to be reported to Darmody Architects immediately.
Refer to engineers drawings for structural details.
All dimensions sized to blockwork.

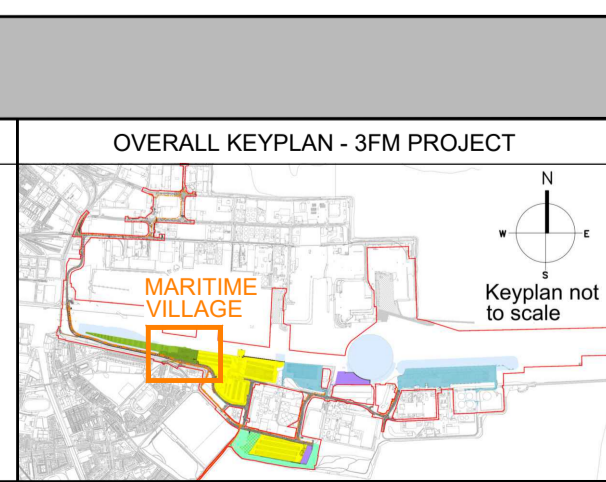
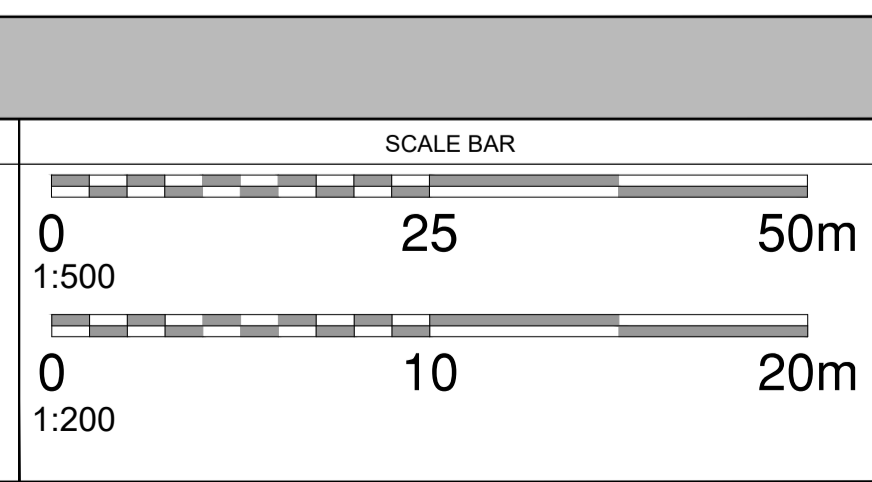
Rev.	Description	Date	Initials

NOTE: ALL DRAWINGS TO BE READ IN CONJUNCTION WITH TTT LANDSCAPE ARCHITECTS, RPS MARINE ENGINEERS, RPS ROAD ENGINEERS, ROD STRUCTURAL ENGINEERS DRAWINGS & SPECIFICATIONS.

XREF'S
CAD REF.

DRAWING KEY	
	Delineates Maritime Village Boundary
	Indicates existing ground line

TAILTE EIREANN LICENCE NO: CV AL50381923
© Tailte Eireann - Surveying

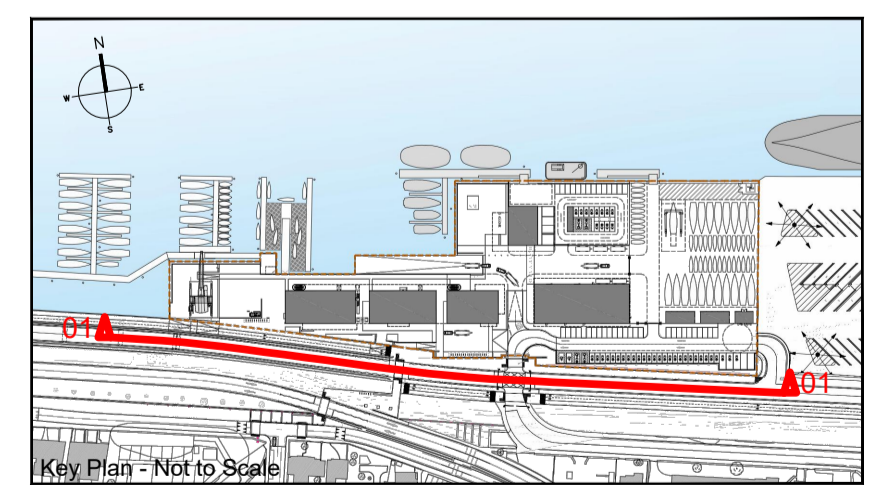


creative innovative flexible

darmody architecture

91 Townsend Street, Dublin 2
353 1 672 9907
info@darmodyarchitecture.com
darmodyarchitecture.com

Rev. No.	Scale	Date	Dm. By	Chkd. By	Issue



Project	3FM Project
Title	Maritime Village: Proposed South Contiguous Elevation
Client	Dublin Port Company
Dwg. No.	CP1901_010-DA-00-XX-DR-A-PA010
Job No.	22061