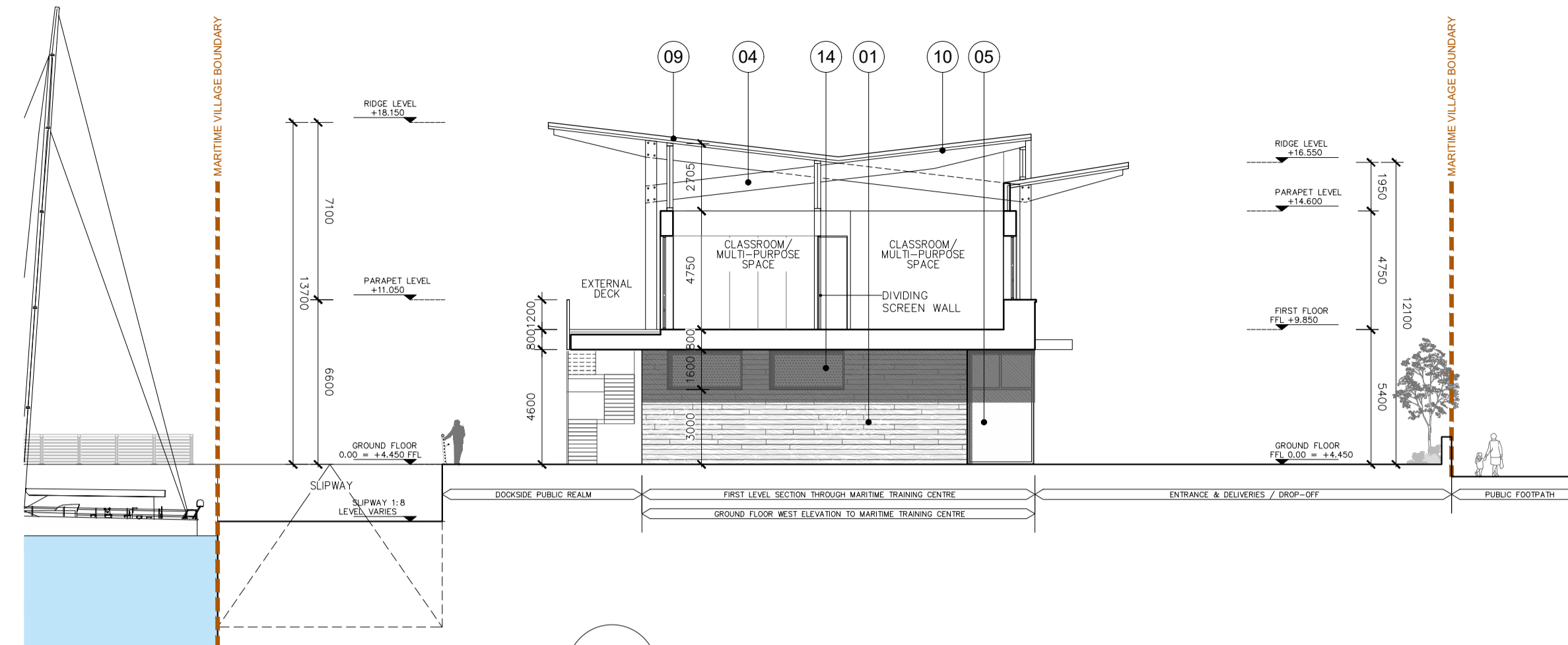
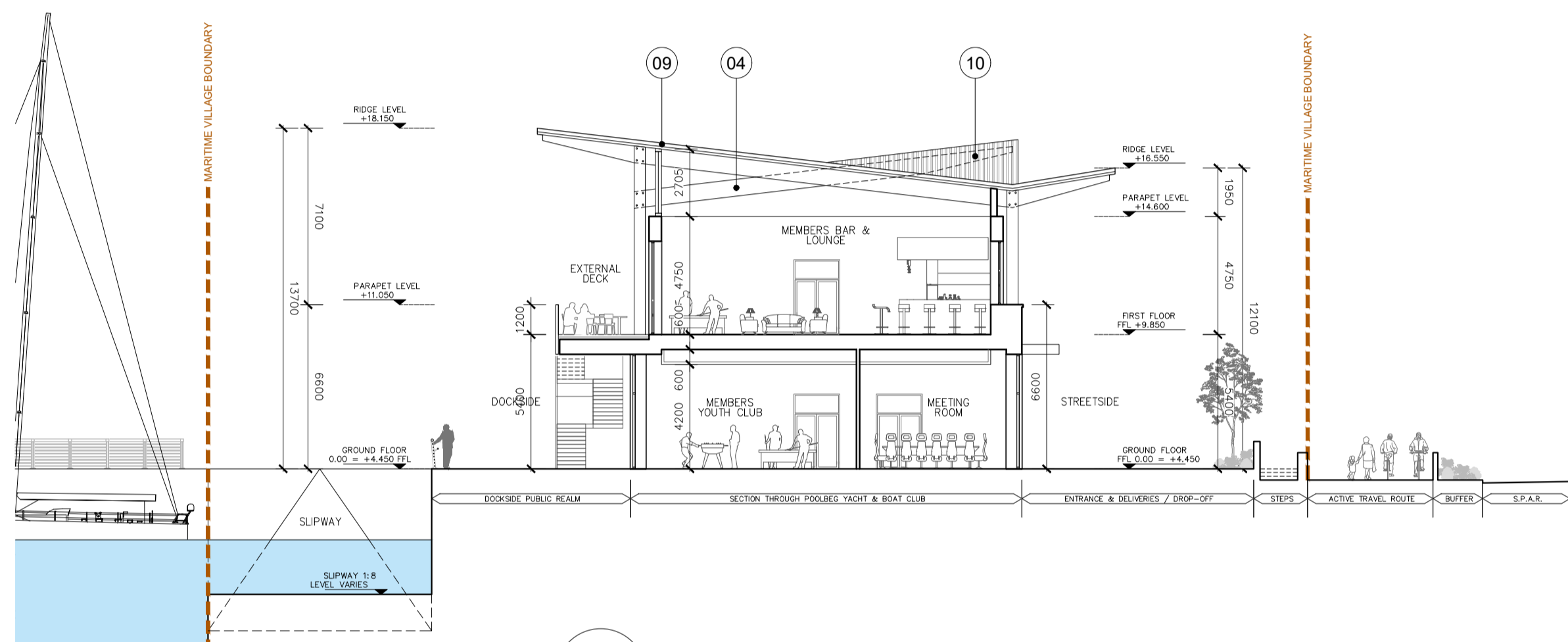


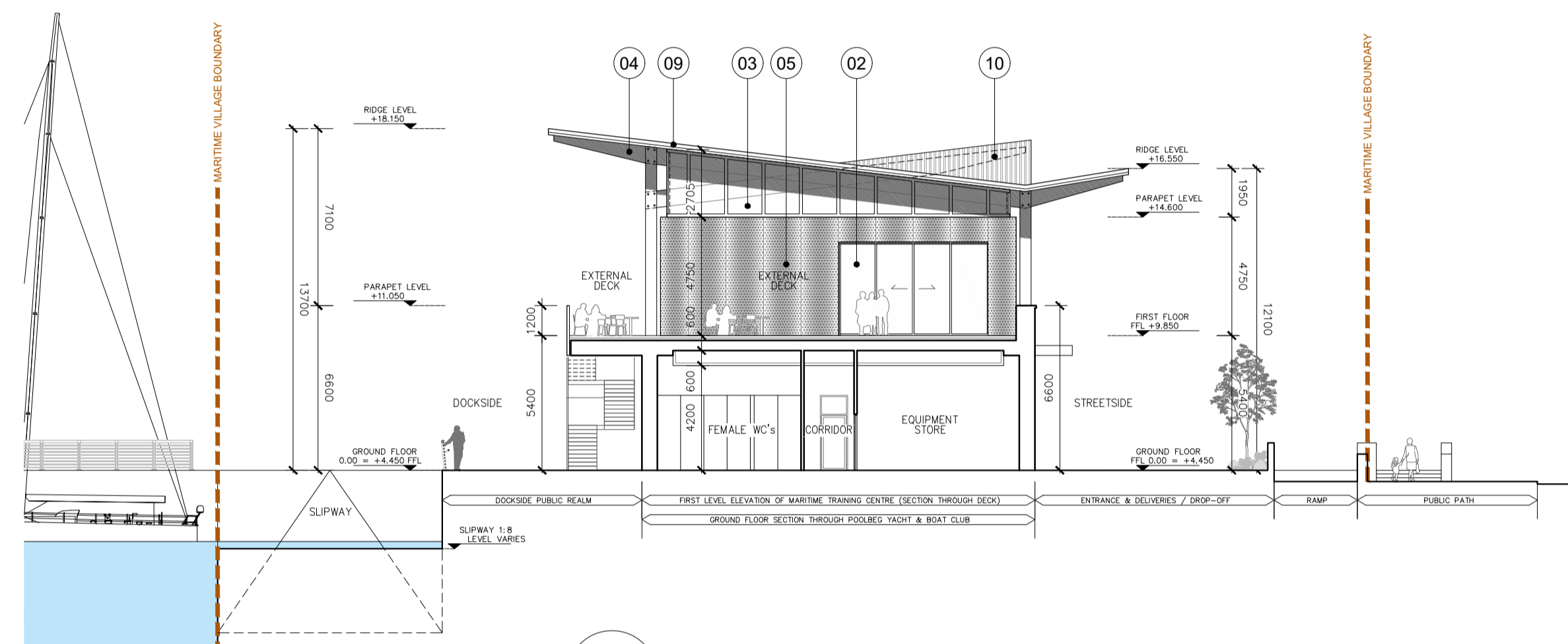
01 Section AA - Proposed Maritime Training Centre
PA210 1:200



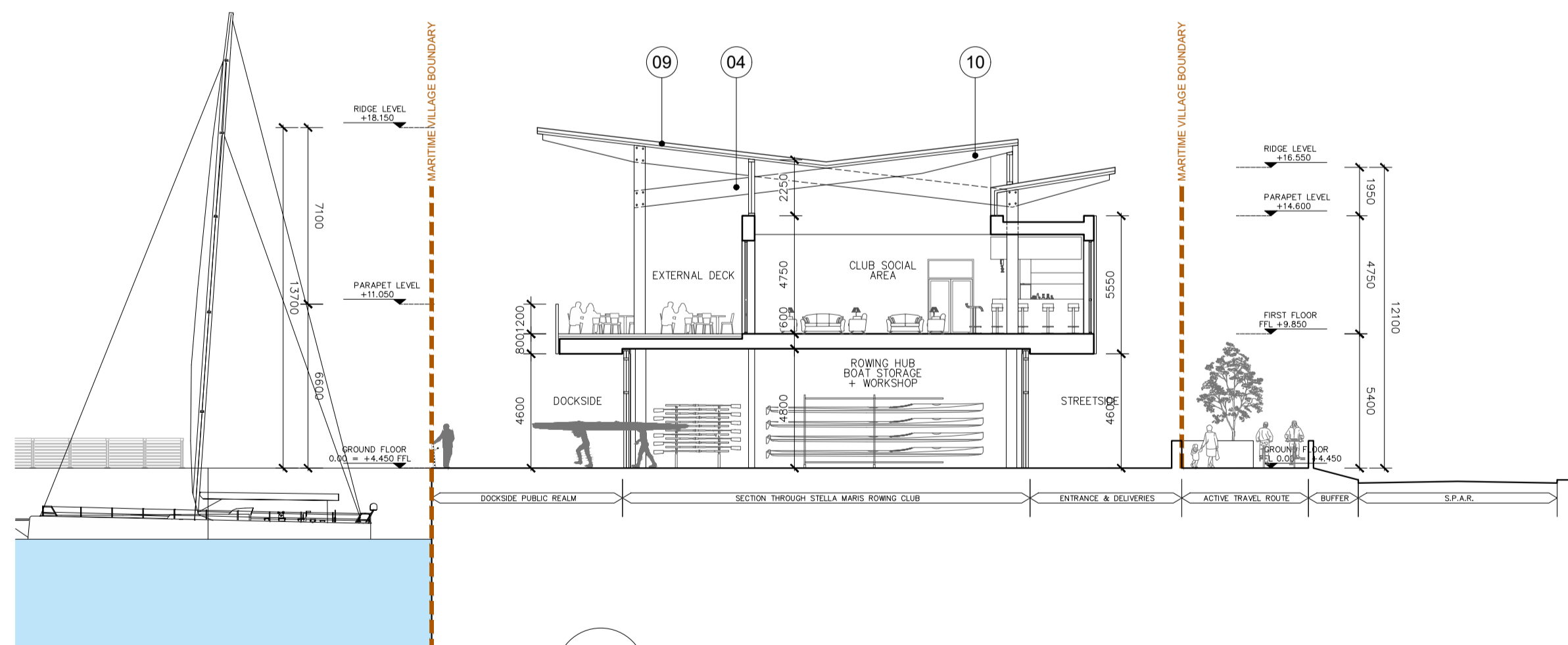
04 Section DD - Proposed Maritime Training Centre
PA210 1:200



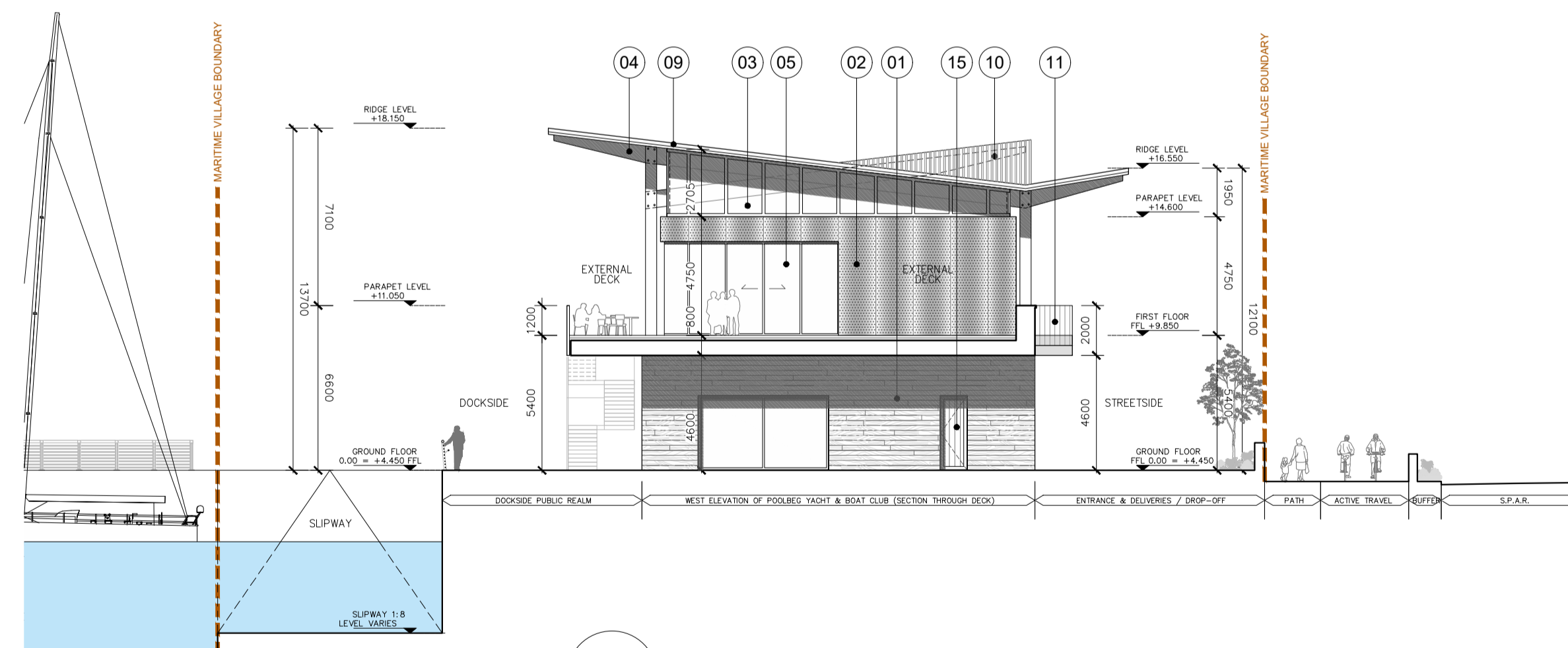
02 Section BB - Proposed Poolbeg Yacht and Boat Club
PA210 1:200



05 Section EE - Proposed Poolbeg Yacht and Boat Club / Maritime Training Centre
PA210 1:200

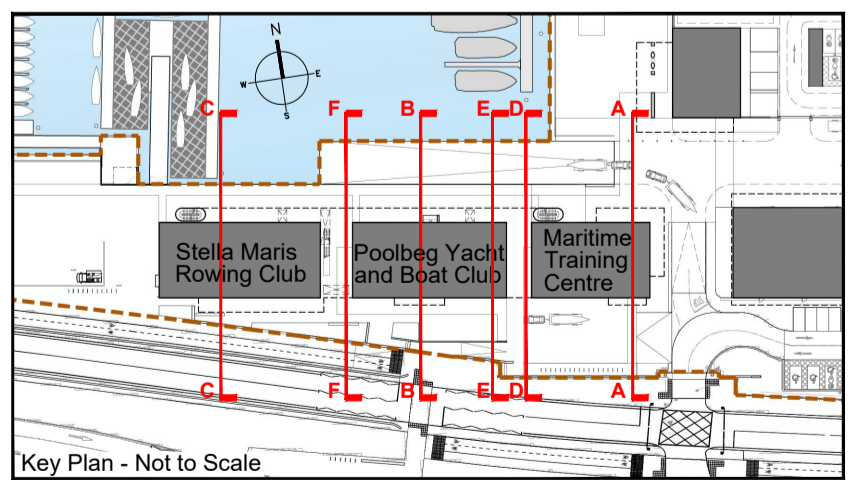


03 Section CC - Proposed Stella Maris Rowing Club
PA210 1:200



06 Section FF - Proposed Poolbeg Yacht & Boat Club
PA210 1:200

- MATERIALS LEGEND:**
- 01 Selected boardmarked concrete wall finish
 - 02 Corrugated perforated metal rainscreen cladding system with powder-coated finish, graphite grey (RAL 7024) or similar and approved
 - 03 Clerestory glazing, hardwood timber double glazed windows
 - 04 Exposed timber frame / glulam columns & beams
 - 05 Aluminum double glazed windows, graphite grey (RAL 7024) or similar and approved
 - 06 Sliding top hung timber barn doors
 - 07 Double glazing behind corrugated perforated metal cladding system with powder-coated finish, graphite grey (RAL 7024) or similar and approved
 - 08 Frameless Glass Oriel window
 - 09 Corrugated metal roof, with powder-coated finish, graphite grey (RAL 7024) or similar and approved
 - 10 Aluminum double glazed dormer windows, graphite grey (RAL 7024) or similar and approved
 - 11 Metal balustrade to balcony / stairs with powder-coated finish, graphite grey (RAL 7024) or similar and approved
 - 12 Cantilevered canopy in fair-faced concrete above club entrances
 - 13 Fair-faced concrete panel with recessed custom club signage adjacent to club entrances, design to be agreed.
 - 14 Aluminum double opaque glazed windows, graphite grey (RAL 7024) or similar and approved
 - 15 Composite timber / aluminum external door



ISSUED FOR PLANNING ONLY, NOT FOR CONSTRUCTION

<p>NOTES:</p> <p>Do not scale from this drawing.</p> <p>Any discrepancies found on site to be reported to Darmody Architects immediately.</p> <p>Any discrepancies found on drawings to be reported to Darmody Architects immediately.</p> <p>Refer to engineers drawings for structural details.</p> <p>All dimensions sized to blockwork.</p>	<table border="1"> <thead> <tr> <th>Rev.</th> <th>Description</th> <th>Date</th> <th>Initials</th> </tr> </thead> <tbody> <tr> <td> </td> <td> </td> <td> </td> <td> </td> </tr> </tbody> </table>	Rev.	Description	Date	Initials					<p>DRAWING KEY</p> <p>--- Deineates Maritime Village Site Boundary</p> <p>TAILTE EIREANN LICENCE NO: CV AL50381923 @ Tailte Eireann - Surveying</p>	<p>SCALE BAR</p> <p>0 05 10m</p>	<p>DRAWING KEY</p> <p>NORTH POINT</p>	<p>creative innovative flexible</p> <p>darmody architecture</p> <p>91 Townsend Street, Dublin 2 353 1 672 9907 info@darmodyarchitecture.com darmodyarchitecture.com</p>	<p>Project: 3FM Project</p> <p>Title: Maritime Village: Proposed Rowing and Yacht Clubs, and Maritime Training Centre - Sections AA-FF</p> <p>Client: Dublin Port Company</p>
	Rev.	Description	Date	Initials										
<p>NOTE: ALL DRAWINGS TO BE READ IN CONJUNCTION WITH TTT LANDSCAPE ARCHITECTS, RPS MARINE ENGINEERS, RPS ROAD ENGINEERS, ROD STRUCTURAL ENGINEERS DRAWINGS & SPECIFICATIONS.</p> <p>XREF'S CAD REF.</p>	<table border="1"> <thead> <tr> <th>Rev. No.</th> <th>Scale</th> <th>Date</th> <th>Dm. By</th> <th>Chkd. By</th> <th>Issue</th> </tr> </thead> <tbody> <tr> <td> </td> <td> </td> <td> </td> <td> </td> <td> </td> <td> </td> </tr> </tbody> </table>	Rev. No.	Scale	Date	Dm. By	Chkd. By	Issue							<p>Dwg. No. CP1901_010-DA-00-XX-DR-A-PA210</p> <p>Job No. 22061</p>
Rev. No.	Scale	Date	Dm. By	Chkd. By	Issue									