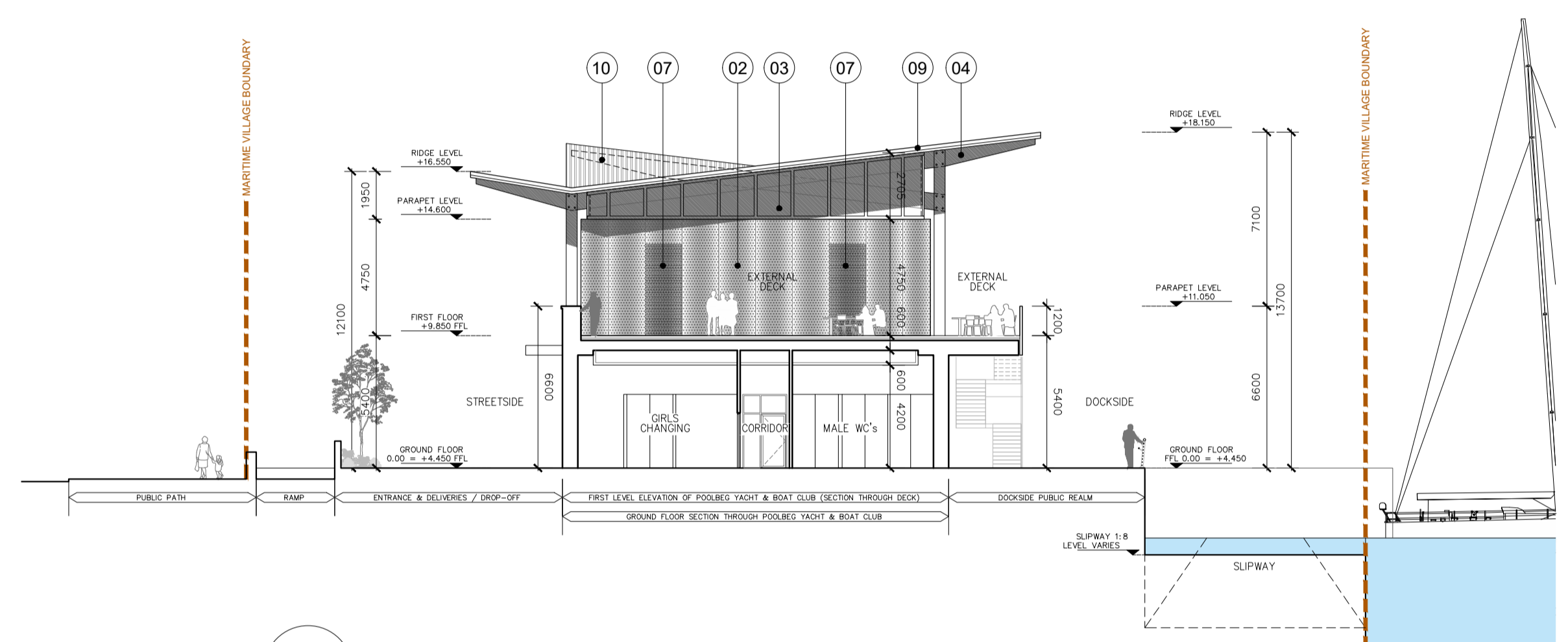
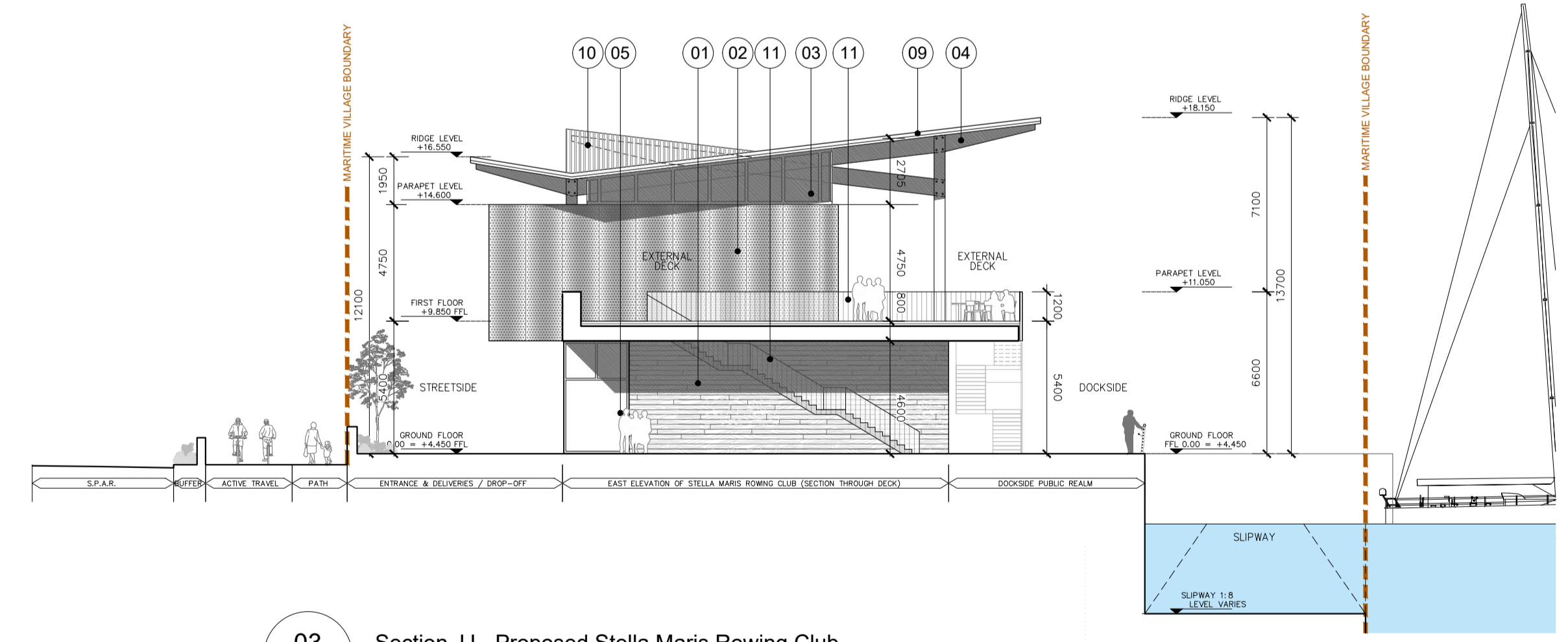


01 Section GG - Proposed Poolbeg Yacht & Boat Club / Maritime Training Centre
PA211 1:200



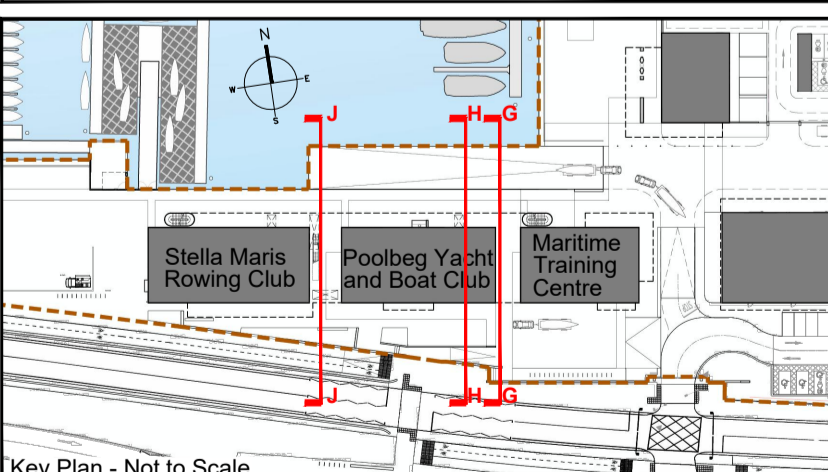
02 Section HH - Proposed Poolbeg Yacht & Boat Club
PA211 1:200



03 Section JJ - Proposed Stella Maris Rowing Club
PA211 1:200

MATERIALS LEGEND:

- 01 Selected boardmarked concrete wall finish
- 02 Corrugated perforated metal rainscreen cladding system with powder-coated finish, graphite grey (RAL 7024) or similar and approved
- 03 Clerestory glazing, hardwood timber double glazed windows
- 04 Exposed timber frame / glulam columns & beams
- 05 Aluminum double glazed windows, graphite grey (RAL 7024) or similar and approved
- 06 Sliding top hung timber barn doors
- 07 Double glazing behind corrugated perforated metal cladding system with powder-coated finish, graphite grey (RAL 7024) or similar and approved
- 08 Frameless Glass Oriel window
- 09 Corrugated metal roof, with powder-coated finish, graphite grey (RAL 7024) or similar and approved
- 10 Aluminum double glazed dormer windows, graphite grey (RAL 7024) or similar and approved
- 11 Metal balustrade to balcony / stairs with powder-coated finish, graphite grey (RAL 7024) or similar and approved
- 12 Cantilevered canopy in fair-faced concrete above club entrances
- 13 Fair-faced concrete panel with recessed custom club signage adjacent to club entrances, design to be agreed.
- 14 Aluminum double opaque glazed windows, graphite grey (RAL 7024) or similar and approved
- 15 Composite timber / aluminum external door



ISSUED FOR PLANNING ONLY, NOT FOR CONSTRUCTION

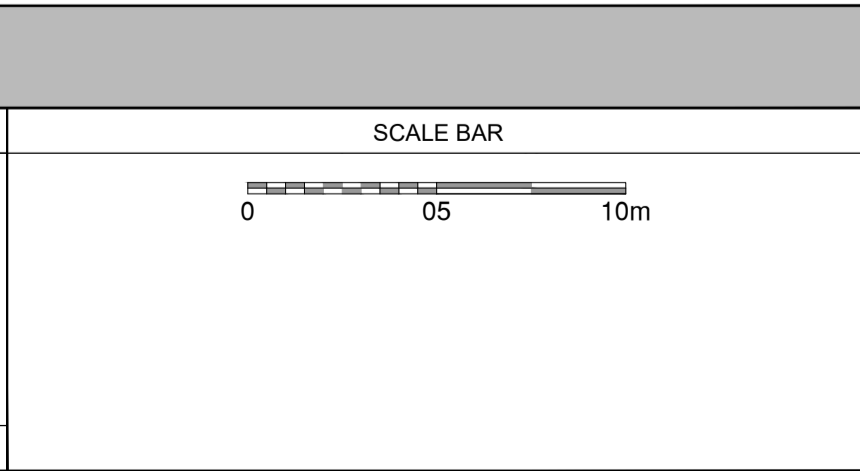
NOTES:
Do not scale from this drawing.
Any discrepancies found on site to be reported to Darmody Architects immediately.
Any discrepancies found on drawings to be reported to Darmody Architects immediately.
Refer to engineers drawings for structural details.
All dimensions sized to blockwork.

Rev.	Description	Date	Initials

NOTE: ALL DRAWINGS TO BE READ IN CONJUNCTION WITH TTT LANDSCAPE ARCHITECTS, RPS MARINE ENGINEERS, RPS ROAD ENGINEERS, ROD STRUCTURAL ENGINEERS DRAWINGS & SPECIFICATIONS.

XREF'S
CAD REF.

DRAWING KEY	
	Delineates Maritime Village Site Boundary
TAILTE EIREANN LICENCE NO: CV AL50381923 @ Tailte Eireann - Surveying	



DRAWING KEY	NORTH POINT

creative innovative flexible

darmody architecture

91 Townsend Street, Dublin 2
353 1 672 9907
info@darmodyarchitecture.com
darmodyarchitecture.com

Rev. No.	Scale	Date	Dm. By	Chkd. By	Issue
	1:200 @ A1	26/06/2024	Suzanne Moloney	Tim Darmody	PLANNING

Project	3FM Project
Title	Maritime Village: Proposed Rowing and Yacht Clubs, and Maritime Training Centre - Sections GG-JJ
Client	Dublin Port Company
Dwg. No.	CP1901_010-DA-00-XX-DR-A-PA211
Job No.	22061