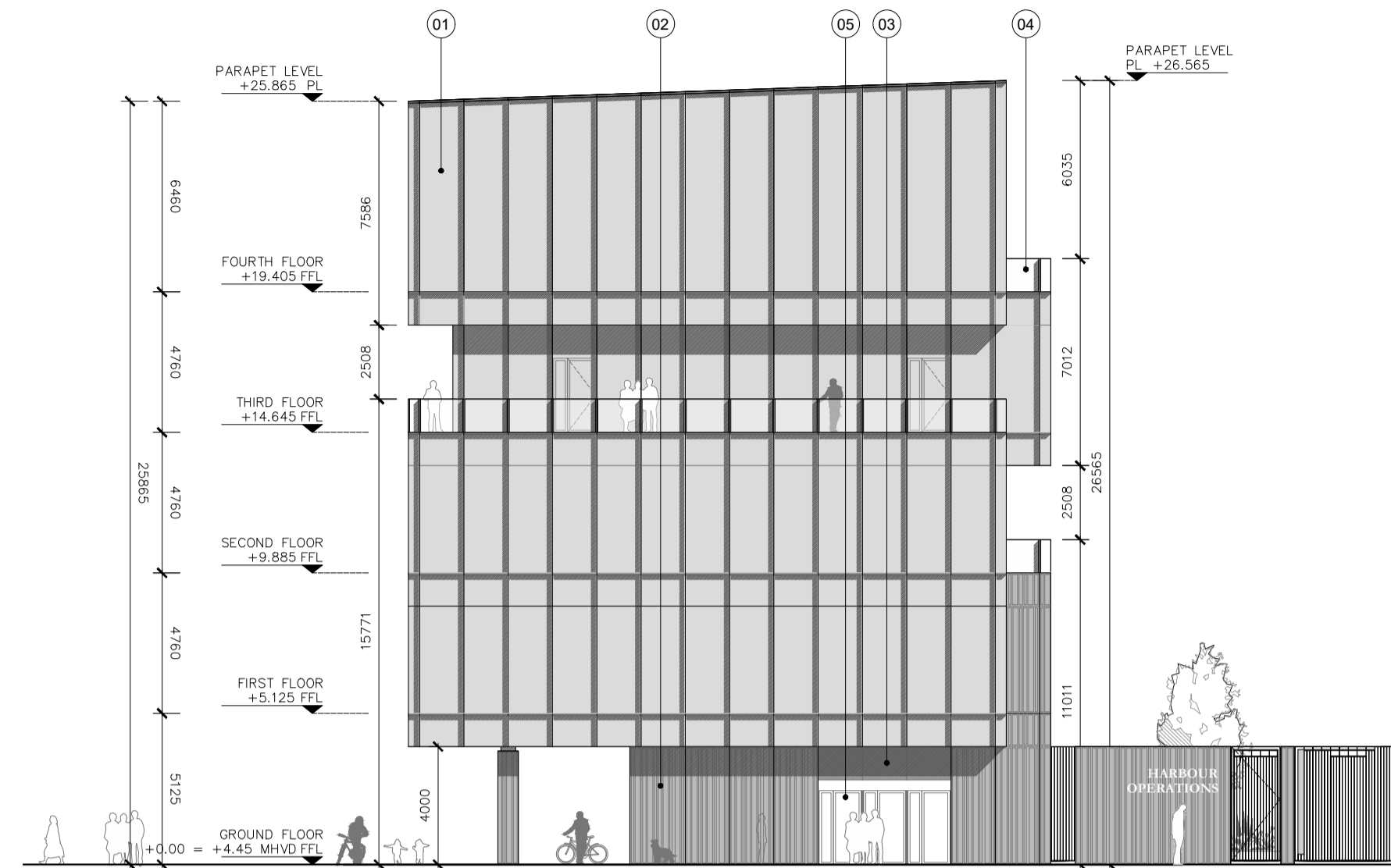
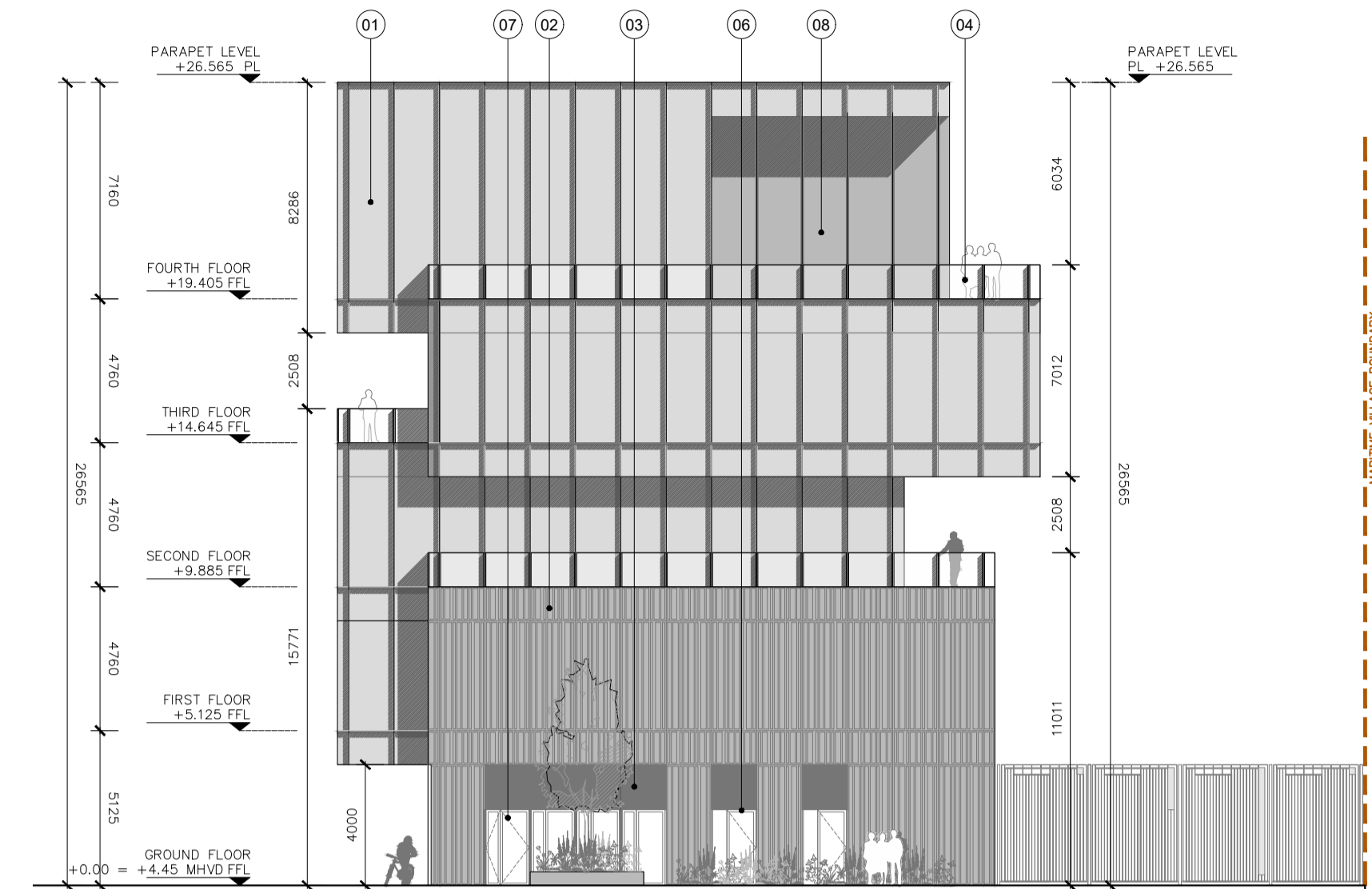


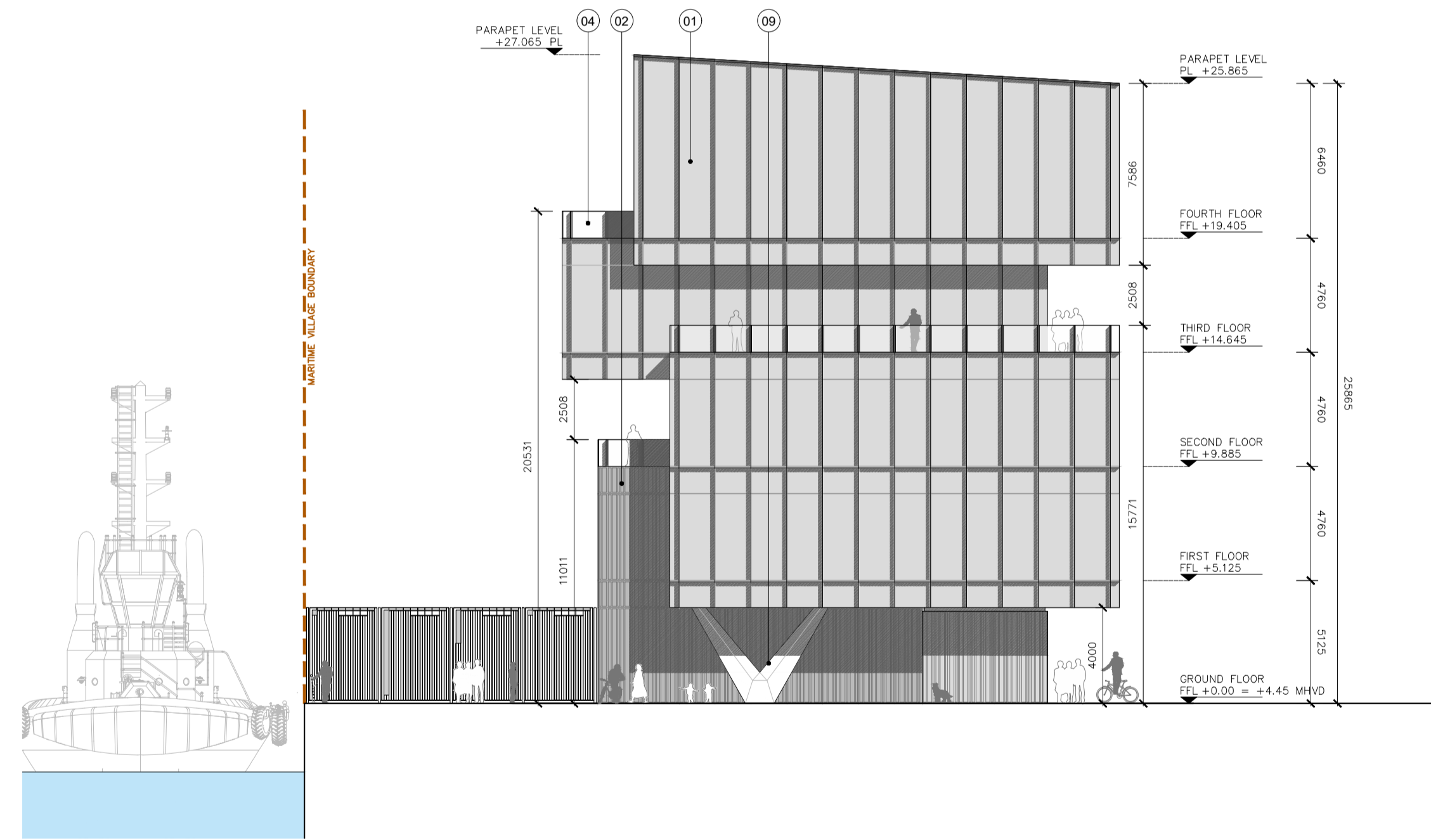
01 Proposed Section AA
PA300 1:200



02 Proposed South Elevation
PA300 1:200



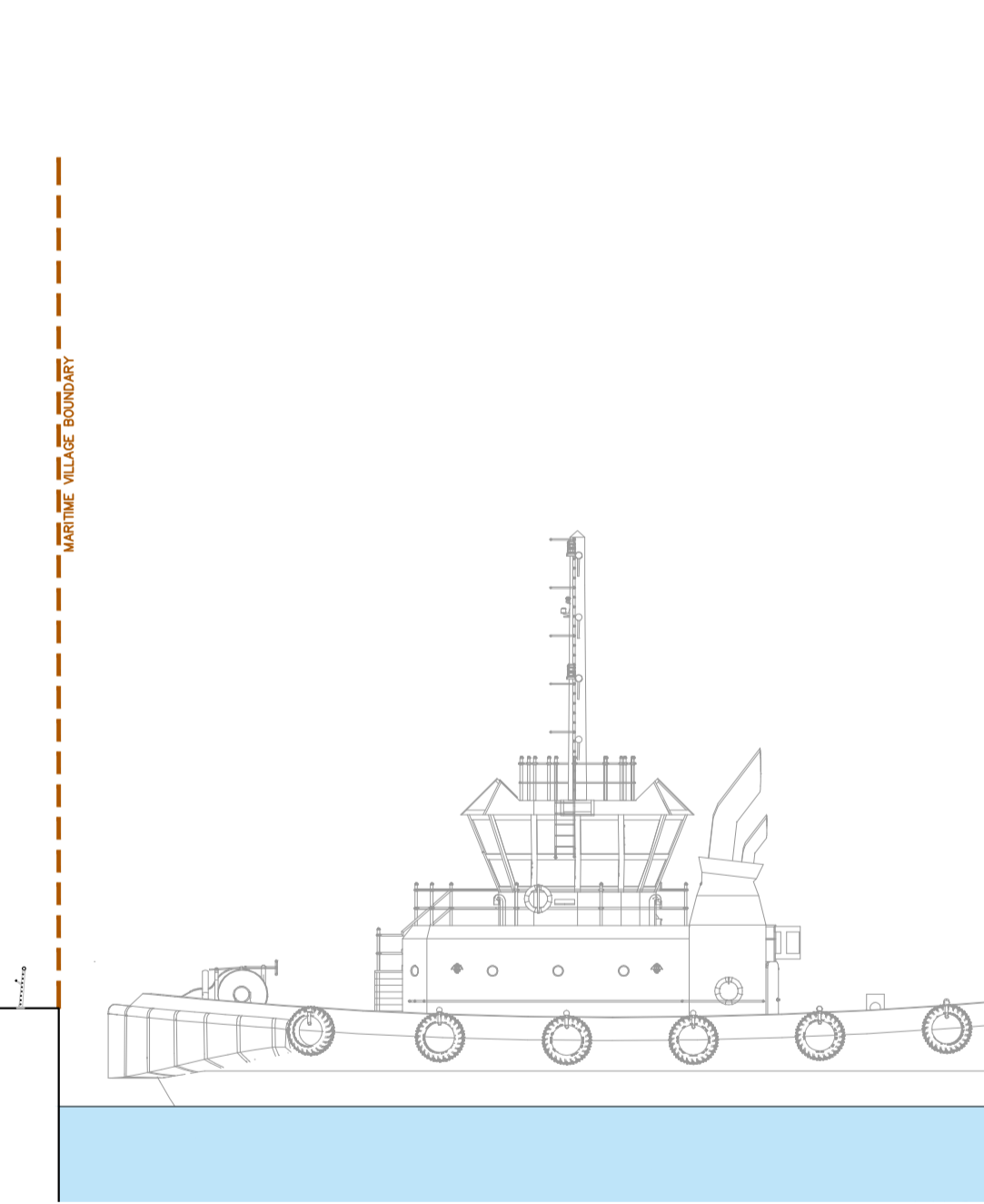
03 Proposed East Elevation
PA300 1:200



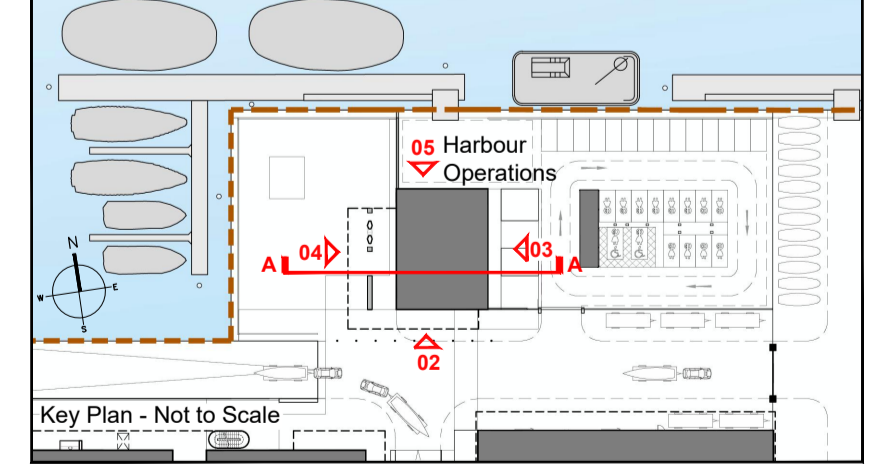
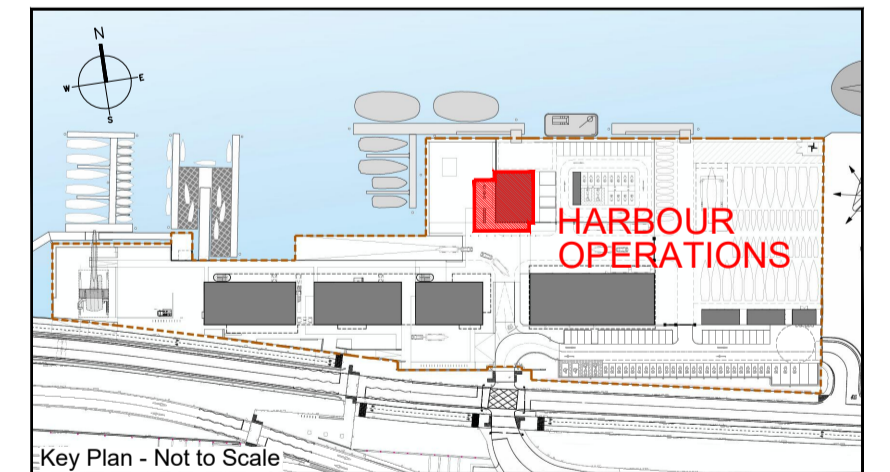
04 Proposed West Elevation
PA300 1:200



05 Proposed North Elevation
PA300 1:200



- MATERIALS LEGEND:
- 01 Curtain wall glazing system Architect's specification
 - 02 Architectural precast concrete wall finish panels to Architect's specification
 - 03 Selected metal cladding system with powder-coated finish, graphite grey (RAL 7024) or similar and approved
 - 04 Selected glazed balustrade to Architects Detail & Specification
 - 05 Selected Alu-clad or similar fixed glazed panels to Architect's specification
 - 06 Selected Alu-clad or similar door with optional fixed glazed panels
 - 07 Selected Alu-clad or similar door to lobby area
 - 08 Curtain wall glazing system to deck areas
 - 09 Externally exposed structural steel V-shaped columns



ISSUED FOR PLANNING ONLY, NOT FOR CONSTRUCTION

<p>NOTES:</p> <p>Do not scale from this drawing.</p> <p>Any discrepancies found on site to be reported to Darmody Architects immediately.</p> <p>Any discrepancies found on drawings to be reported to Darmody Architects immediately.</p> <p>Refer to engineers drawings for structural details.</p> <p>All dimensions sized to blockwork.</p>				<p>Rev. Description. Date. Initials.</p>			
<p>NOTE: ALL DRAWINGS TO BE READ IN CONJUNCTION WITH TTT LANDSCAPE ARCHITECTS, RPS MARINE ENGINEERS, RPS ROAD ENGINEERS, ROD STRUCTURAL ENGINEERS DRAWINGS & SPECIFICATIONS.</p>				<p>DRAWING KEY</p> <p>--- Deineates Maritime Village Site Boundary</p> <p>TAILTE EIREANN LICENCE NO: CV AL50381923</p> <p>@ Tailte Eireann - Surveying</p>			
<p>XREF'S CAD REF.</p>				<p>SCALE BAR</p> <p>0 05 10m</p>			
<p>DRAWING KEY</p>				<p>NORTH POINT</p>			

creative innovative flexible

darmody
architecture

91 Townsend Street, Dublin 2
353 1 672 9907
info@darmodyarchitecture.com
darmodyarchitecture.com

Rev. No.	Scale	Date	Dm. By	Chkd. By	Issue
	1:200 @ A1	20/06/2024	Adam Brzostek	Tim Darmody	PLANNING

Project:	3FM Project
Title:	Maritime Village: Proposed Harbour Operations Building - Elevations & Section
Client:	Dublin Port Company
Dwg. No.	CP1901_010-DA-00-XX-DR-A-PA300
Job No.	22061