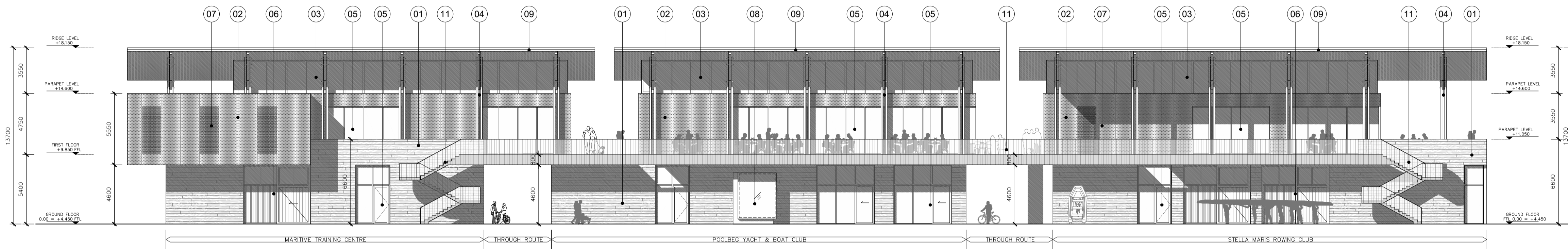
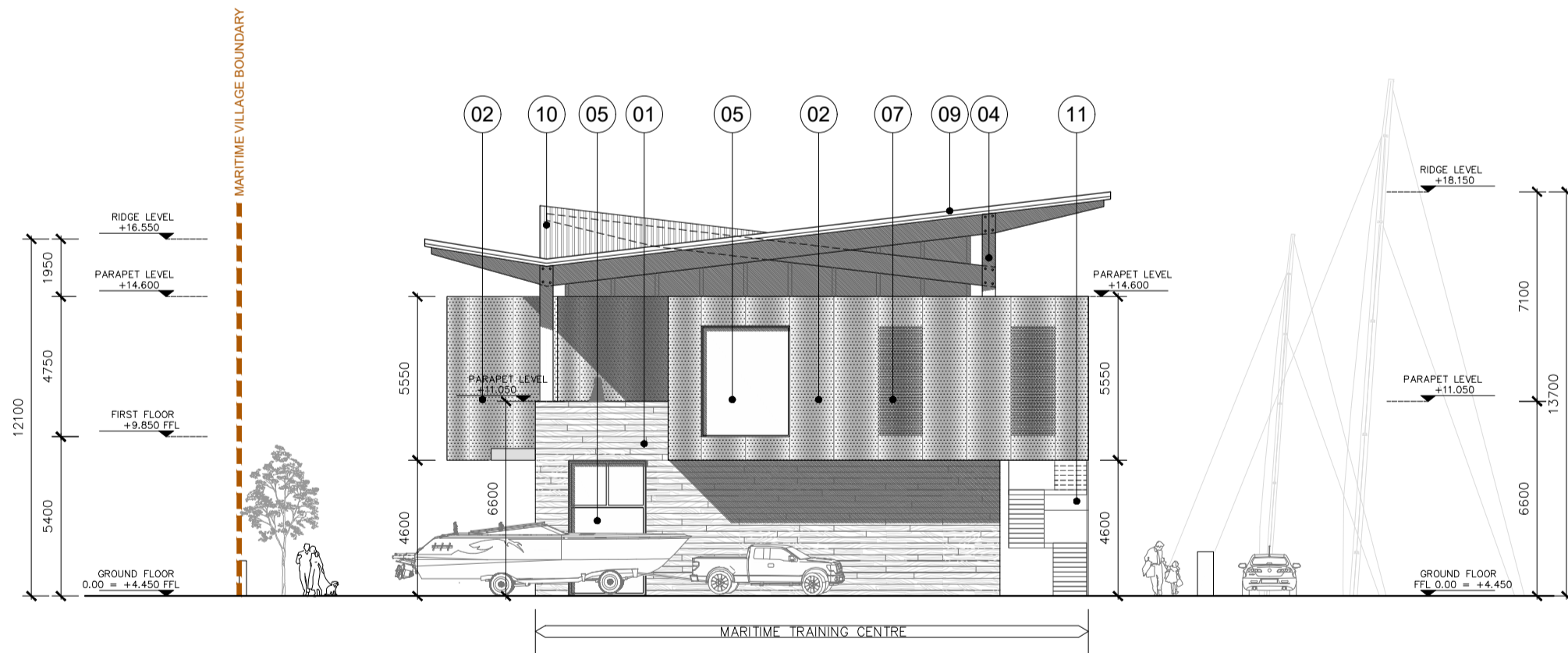


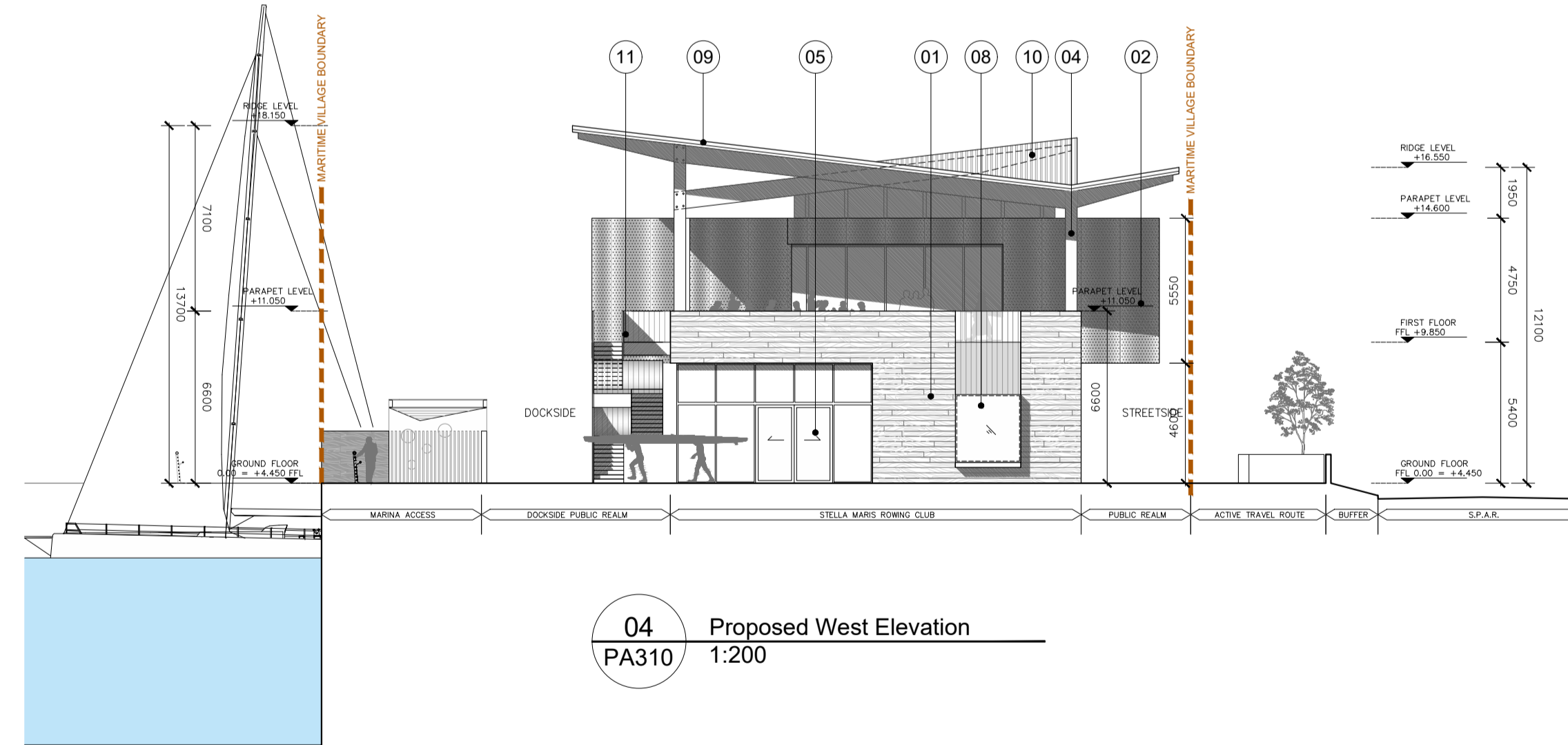
01 Proposed South Elevation
PA310 1:200



02 Proposed North Elevation
PA310 1:200



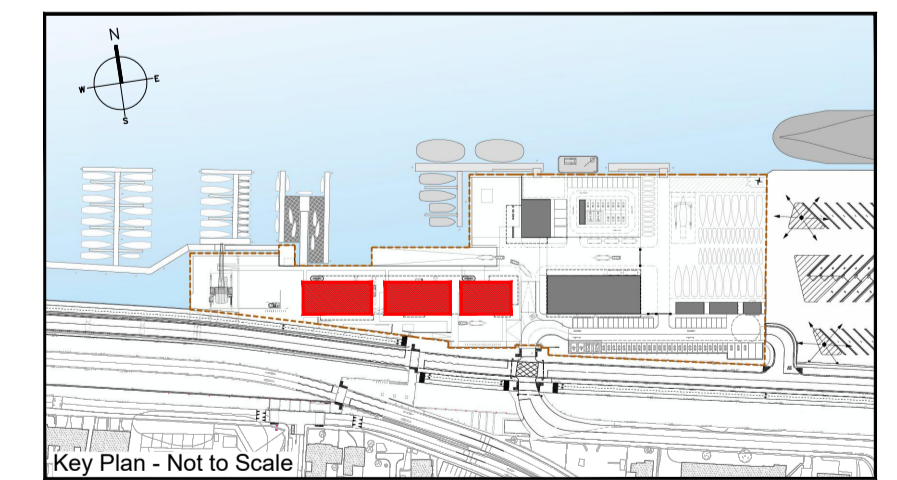
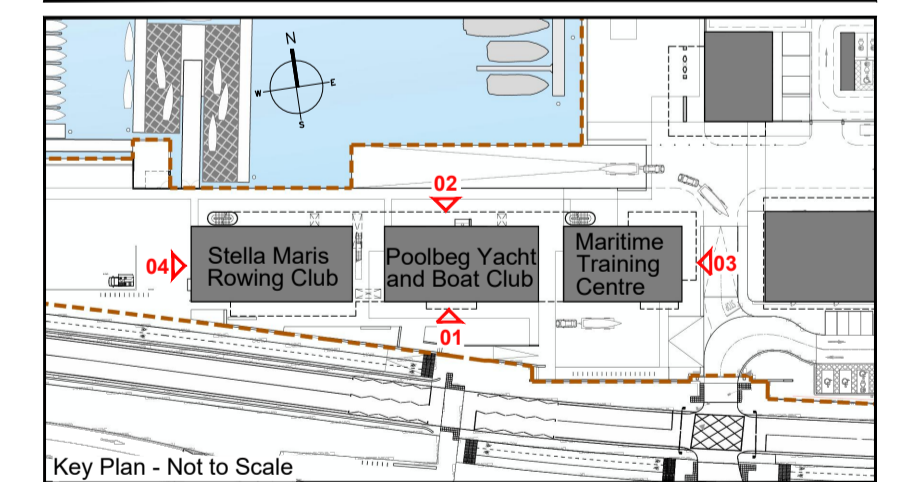
03 Proposed East Elevation
PA310 1:200



04 Proposed West Elevation
PA310 1:200

MATERIALS LEGEND:

- 01 Selected boardmarked concrete wall finish
- 02 Corrugated perforated metal rainscreen cladding system with powder-coated finish, graphite grey (RAL 7024) or similar and approved
- 03 Clerestory glazing, hardwood timber double glazed windows
- 04 Exposed timber frame / glulam columns & beams
- 05 Aluminum double glazed windows, graphite grey (RAL 7024) or similar and approved
- 06 Sliding top hung timber barn doors
- 07 Double glazing behind corrugated perforated metal cladding system with powder-coated finish, graphite grey (RAL 7024) or similar and approved
- 08 Frameless Glass Oriel window
- 09 Corrugated metal roof, with powder-coated finish, graphite grey (RAL 7024) or similar and approved
- 10 Aluminum double glazed dormer windows, graphite grey (RAL 7024) or similar and approved
- 11 Metal balustrade to balcony / stairs with powder-coated finish, graphite grey (RAL 7024) or similar and approved
- 12 Cantilevered canopy in fair-faced concrete above club entrances
- 13 Fair-faced concrete panel with recessed custom club signage adjacent to club entrances, design to be agreed.



ISSUED FOR PLANNING ONLY, NOT FOR CONSTRUCTION

<p>NOTES:</p> <p>Do not scale from this drawing.</p> <p>Any discrepancies found on site to be reported to Darmody Architects immediately.</p> <p>Any discrepancies found on drawings to be reported to Darmody Architects immediately.</p> <p>Refer to engineers drawings for structural details.</p> <p>All dimensions sized to blockwork.</p>	<p>Rev. Description. Date. Initials.</p>		<p>DRAWING KEY</p> <p>--- Delineates Maritime Village Site Boundary</p> <p>TAILTE EIREANN LICENCE NO: CV AL50381923</p> <p>@ Tailte Eireann - Surveying</p>		<p>SCALE BAR</p> <p>0 05 10m</p>		<p>DRAWING KEY</p> <p>NORTH POINT</p>		<p>creative innovative flexible</p> <p>darmody architecture</p> <p>91 Townsend Street, Dublin 2 353 1 672 9907 info@darmodyarchitecture.com darmodyarchitecture.com</p>		<p>Project: 3FM Project</p> <p>Title: Maritime Village: Proposed Rowing and Yacht Clubs, and Maritime Training Centre - Elevations</p> <p>Client: Dublin Port Company</p>	
	<p>NOTE: ALL DRAWINGS TO BE READ IN CONJUNCTION WITH TTT LANDSCAPE ARCHITECTS, RPS MARINE ENGINEERS, RPS ROAD ENGINEERS, ROD STRUCTURAL ENGINEERS DRAWINGS & SPECIFICATIONS.</p> <p>XREF'S CAD REF.</p>									<p>Rev. No. Scale Date Dm. By Chkd. By Issue</p> <p>1:200 @ A1 25/06/2024 Suzanne Moloney Tim Darmody PLANNING</p>		<p>Dwg. No. Job No.</p> <p>CP1901_010-DA-00-XX-DR-A-PA310 22061</p>