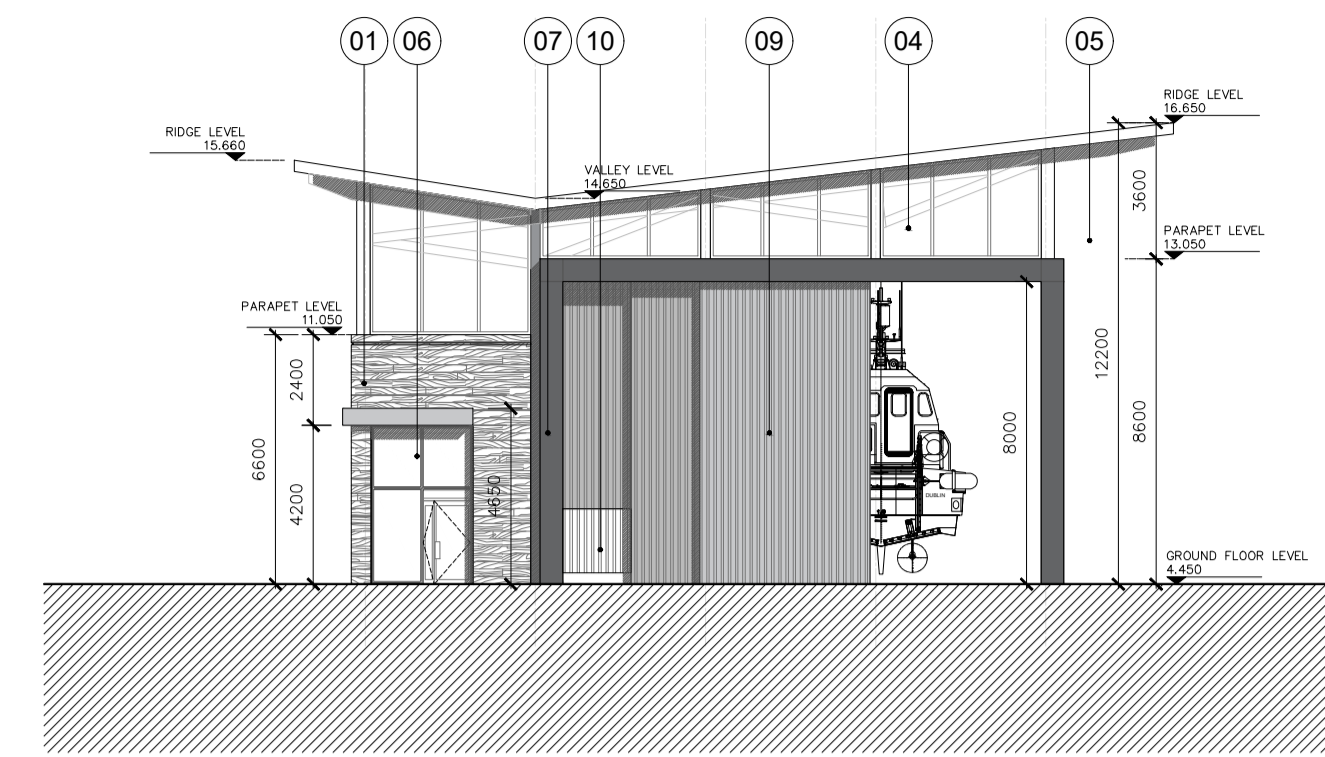
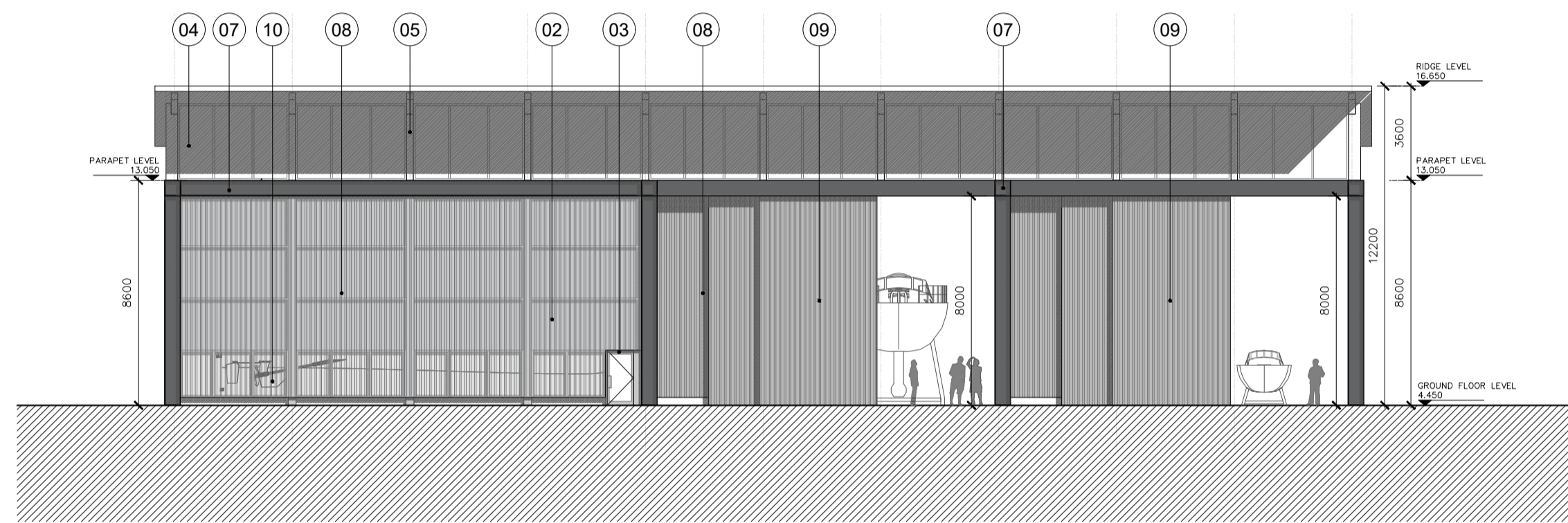


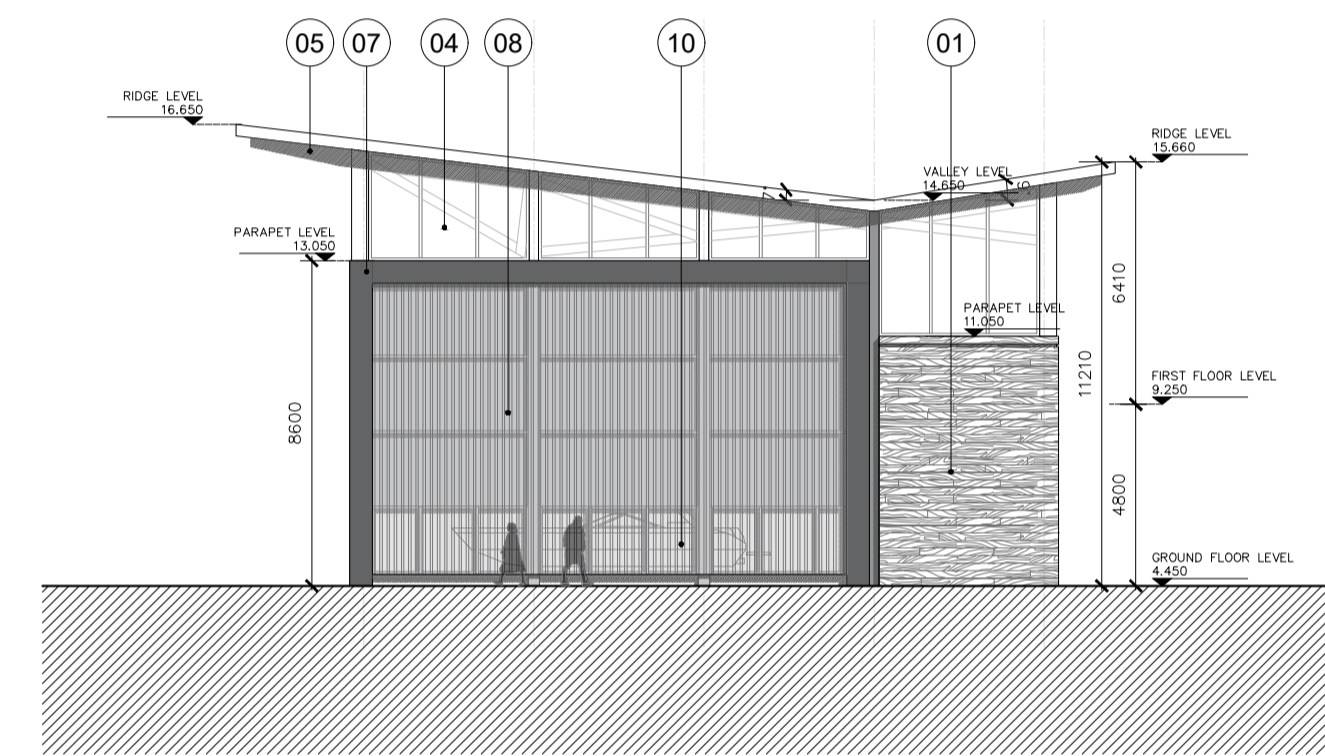
01 Proposed South Elevation  
PA320 1:200



02 Proposed East Elevation  
PA320 1:200

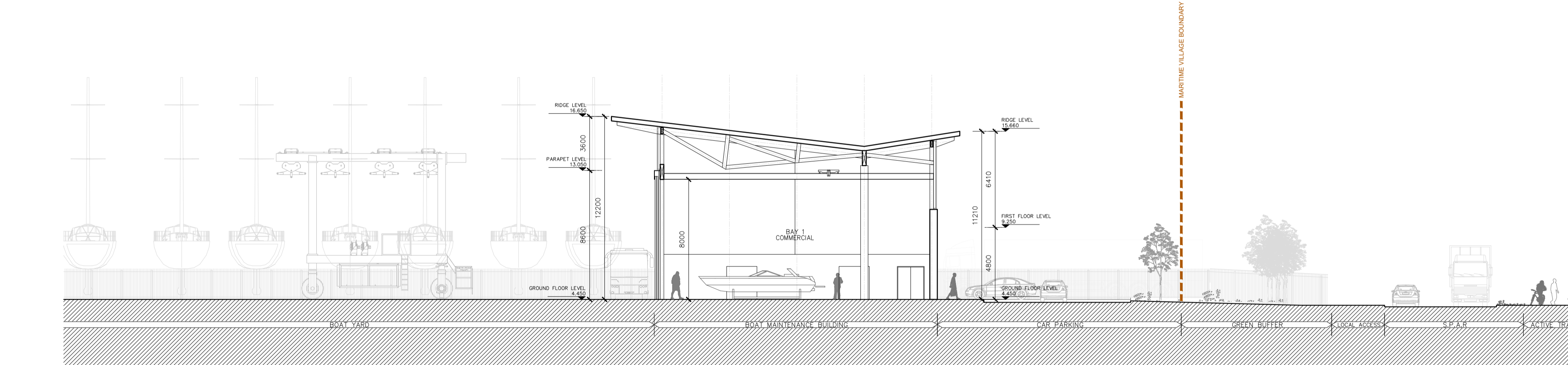
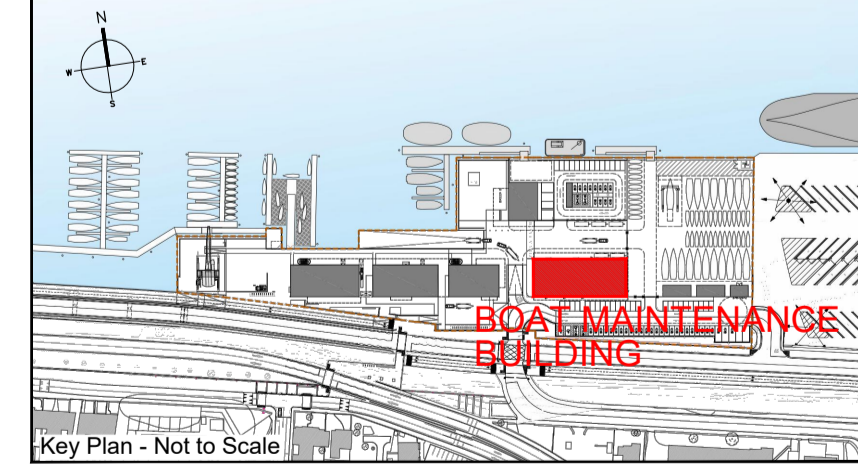
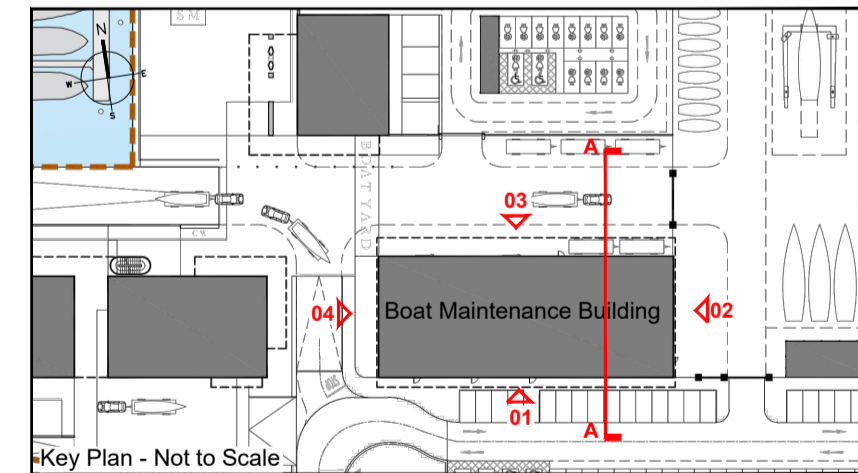


03 Proposed North Elevation  
PA320 1:200



04 Proposed West Elevation  
PA320 1:200

- MATERIALS LEGEND:**
- 01 Selected boardmarked concrete wall finish
  - 02 Selected metal cladding
  - 03 Pilkington or similar approved frosted dark channel glazing
  - 04 Clerestory glazing, hardwood timber double glazed windows
  - 05 Exposed timber frame / glulam columns & beams
  - 06 Double glazing
  - 07 Expressed steel C-channel with powder-coated finish, oxide red (RAL 3009) or similar approved
  - 08 Corrugated perforated metal cladding system with powder-coated finish, graphite grey (RAL 7024) or similar and approved
  - 09 Sliding top hung hangar doors colored graphite gray (RAL 7024) or similar and approved
  - 10 Double glazing behind corrugated perforated metal cladding system with powder-coated finish, graphite grey (RAL 7024) or similar and approved
  - 11 Selected smooth sandblasted concrete wall finish



05 Section AA - Proposed Boat Maintenance Building  
PA320 1:200

ISSUED FOR PLANNING ONLY, NOT FOR CONSTRUCTION

<p>NOTES:</p> <p>Do not scale from this drawing.</p> <p>Any discrepancies found on site to be reported to Darmody Architects immediately.</p> <p>Any discrepancies found on drawings to be reported to Darmody Architects immediately.</p> <p>Refer to engineers drawings for structural details.</p> <p>All dimensions sized to blockwork.</p>				<p>Rev. Description Date Initials</p>		<p>DRAWING KEY</p> <p>Delineates Maritime Village Site Boundary</p> <p>TAILTE EIREANN LICENCE NO: CV AL50381923</p> <p>@ Tailte Eireann - Surveying</p>		<p>SCALE BAR</p> <p>0 05 10m</p>		<p>DRAWING KEY</p>		<p>NORTH POINT</p>	
<p>NOTE: ALL DRAWINGS TO BE READ IN CONJUNCTION WITH TTT LANDSCAPE ARCHITECTS, RPS MARINE ENGINEERS, RPS ROAD ENGINEERS, ROD STRUCTURAL ENGINEERS DRAWINGS &amp; SPECIFICATIONS.</p>				<p>XREF'S</p> <p>CAD REF.</p>									

**creative innovative flexible**

**darmody architecture**

91 Townsend Street, Dublin 2  
353 1 672 9907  
info@darmodyarchitecture.com  
darmodyarchitecture.com

Rev. No.	Scale	Date	Dm. By	Chkd. By	Issue
	1:200 @ A1	25/06/2024	Savva Zakharov	Tim Darmody	PLANNING

Project	3FM Project		
Title	Maritime Village: Proposed Boat Maintenance Building - Elevations and Section		
Client	Dublin Port Company		
Dwg. No.	CP1901_010-DA-00-XX-DR-A-PA320	Job No.	22061