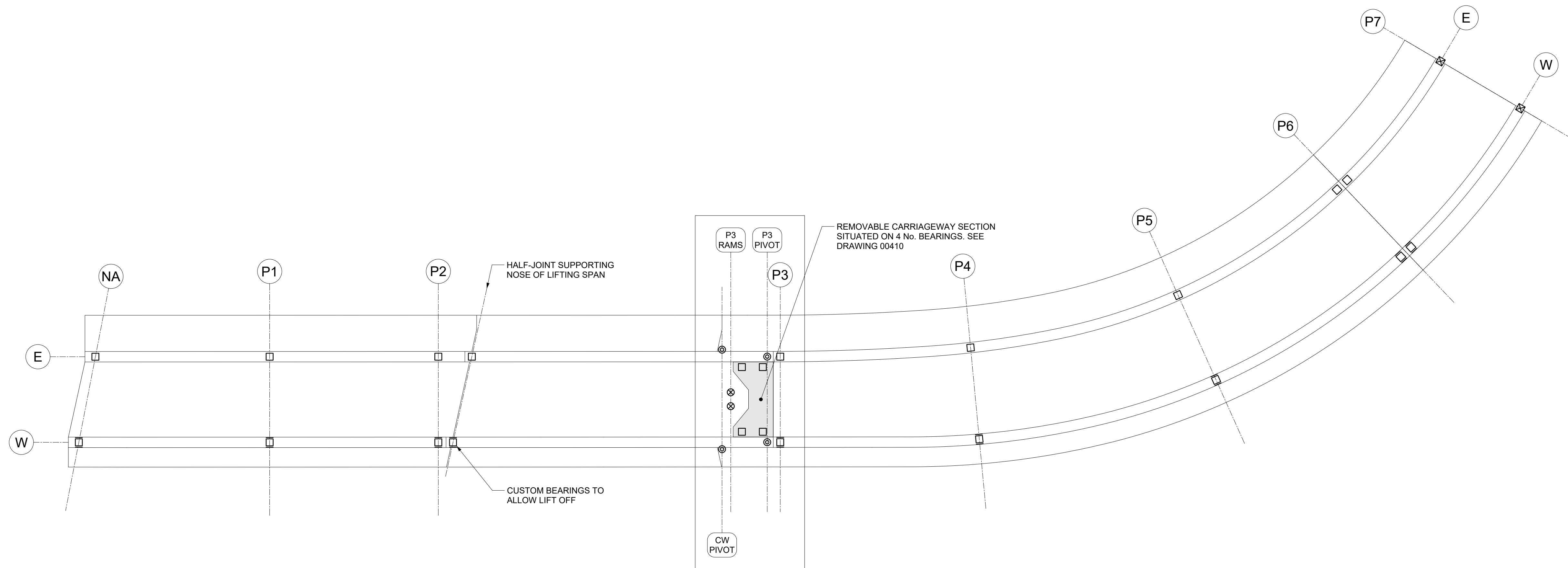


**NOTES**

1. These drawings shall be read in conjunction with the Preliminary Design Report, CP1901\_3FM-COWI-SBR-SP-RP-S-0002
2. Bearings assumed to be reinforced elastomeric bearings. Shear keys may be required to increase horizontal capacities.



**ARTICULATION PLAN**  
NOT TO SCALE

**LEGEND**

BEARING TYPES (WHERE STATED) AS PER BS EN 1337-1

- TYPE 1.1 - ELASTOMERIC BEARING
- ◻ TYPE 1.2 - ELASTOMERIC BEARING WITH RESTRAINTS FOR ONE AXIS
- ⊠ INTEGRAL CONNECTION
- ⊗ MECHANICAL RAMS
- ⊙ MECHANICAL PIVOT - SPHERICAL BEARING

3	Revised for Planning Comments	OLSS	28/06/24
2	Revised for Stage Approval	OLSS	19/04/24
1	Transition Span Added	OLSS	09/11/23
0	First Issue	OLSS	31/05/23
rev	amendments	check	date



Title  
**SPAR Bridge  
Bearing Articulation**

Project Number	Sheet Size	Drawing Scale
CP1901_3FM	A1	NOT TO SCALE

Drawing Number  
**COWI-SBR-SP-DR-S-100-00090**

Drawn By	Status	Revision
C. Fleming	S4	<b>3</b>

Checked By	Approved By	Date
O. Stross	O. Stross	28/06/2024