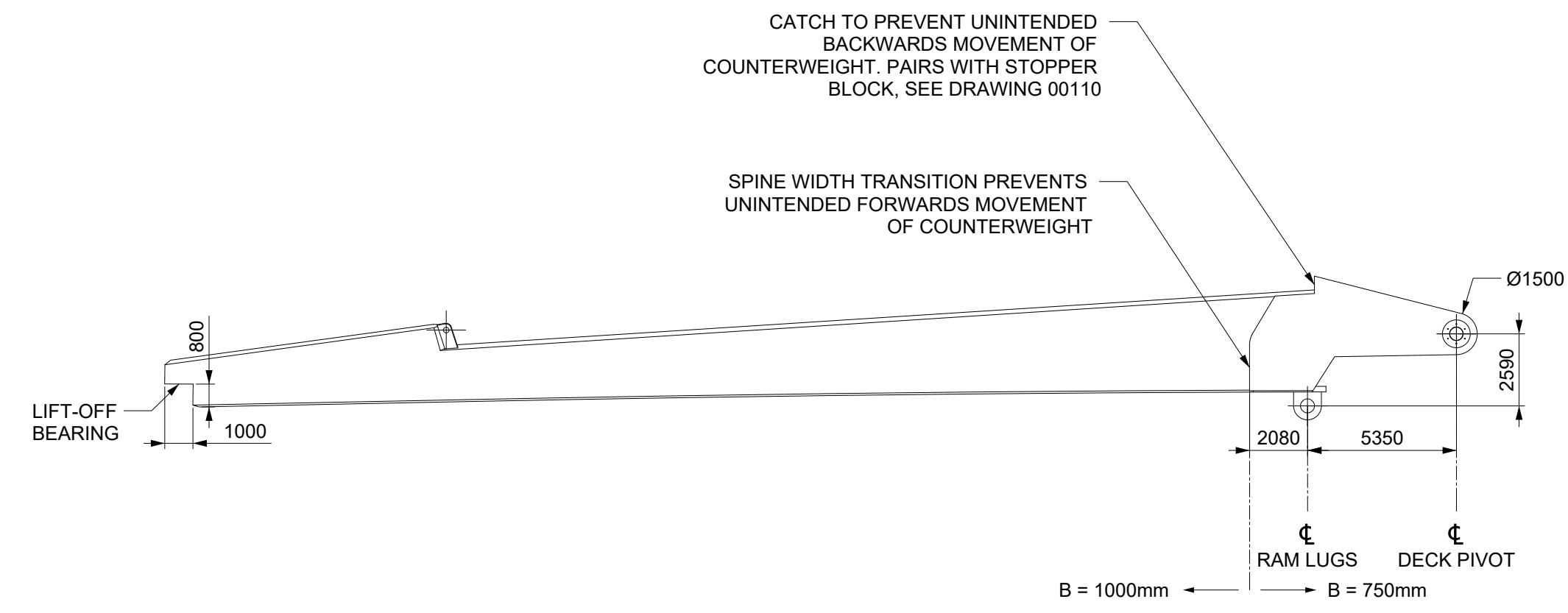
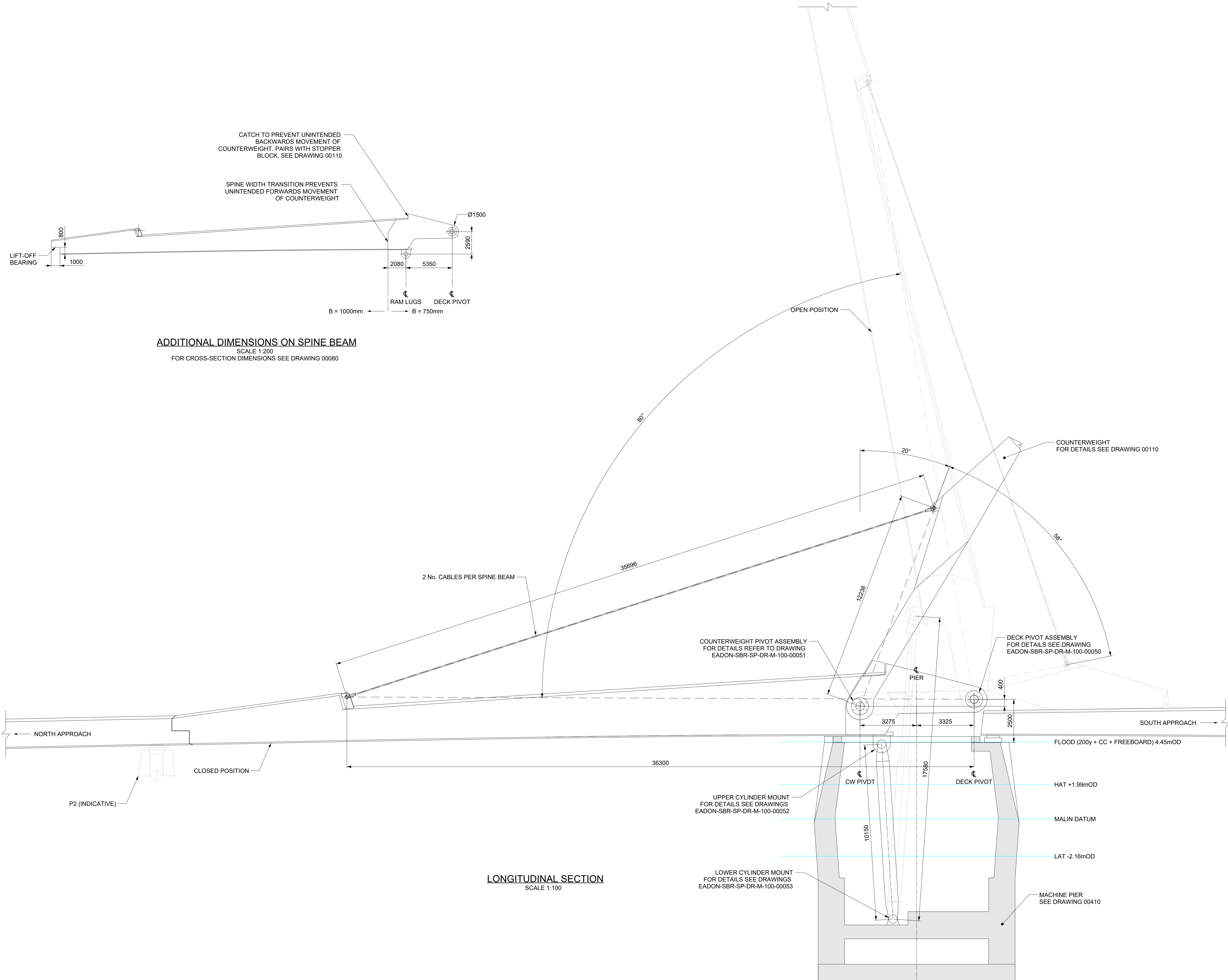


NOTES

1. These drawings shall be read in conjunction with the Preliminary Design Report, CP1901_3FM-COWI-SBR-SP-RP-S-0002
2. Refer to drawing CP1901_3FM-MOXON-SBR-SP-DR-A-00005 for location of opening span
3. Flood level shown is for a 200-year return period, plus 1 m climate change allowance, plus freeboard allowance. Levels shown as mOD refer to Malin Head OD datum



ADDITIONAL DIMENSIONS ON SPINE BEAM
SCALE 1:200
FOR CROSS-SECTION DIMENSIONS SEE DRAWING 00080



LONGITUDINAL SECTION
SCALE 1:100

2	Revised for Planning Comments	OLSS	28/06/24
1	Revised for Stage Approval	OLSS	19/04/24
0	First Issue	OLSS	31/05/23
rev	amendments	check	date

rps moxon eadon
CONSULTING

COWI

COWI UK Ltd.
Bevis Marks House
24 Bevis Marks
London
EC3A 7JB

Client

COMHLAUGHT CHALAFORT
ATHA CLIATH
DUBLIN PORT COMPANY

Project

3FMProject Bringing Dublin Port To 2040

Title

SPAR Bridge
Opening Span
Longitudinal Section

Project Number	Sheet Size	Drawing Scale
CP1901_3FM	A1	As Shown

Drawing Number

COWI-SBR-SP-DR-S-100-00105

Drawn By	Status	Revision
C. Fleming	S4	2

Checked By	Approved By	Date
O. Stross	O. Stross	28/06/2024