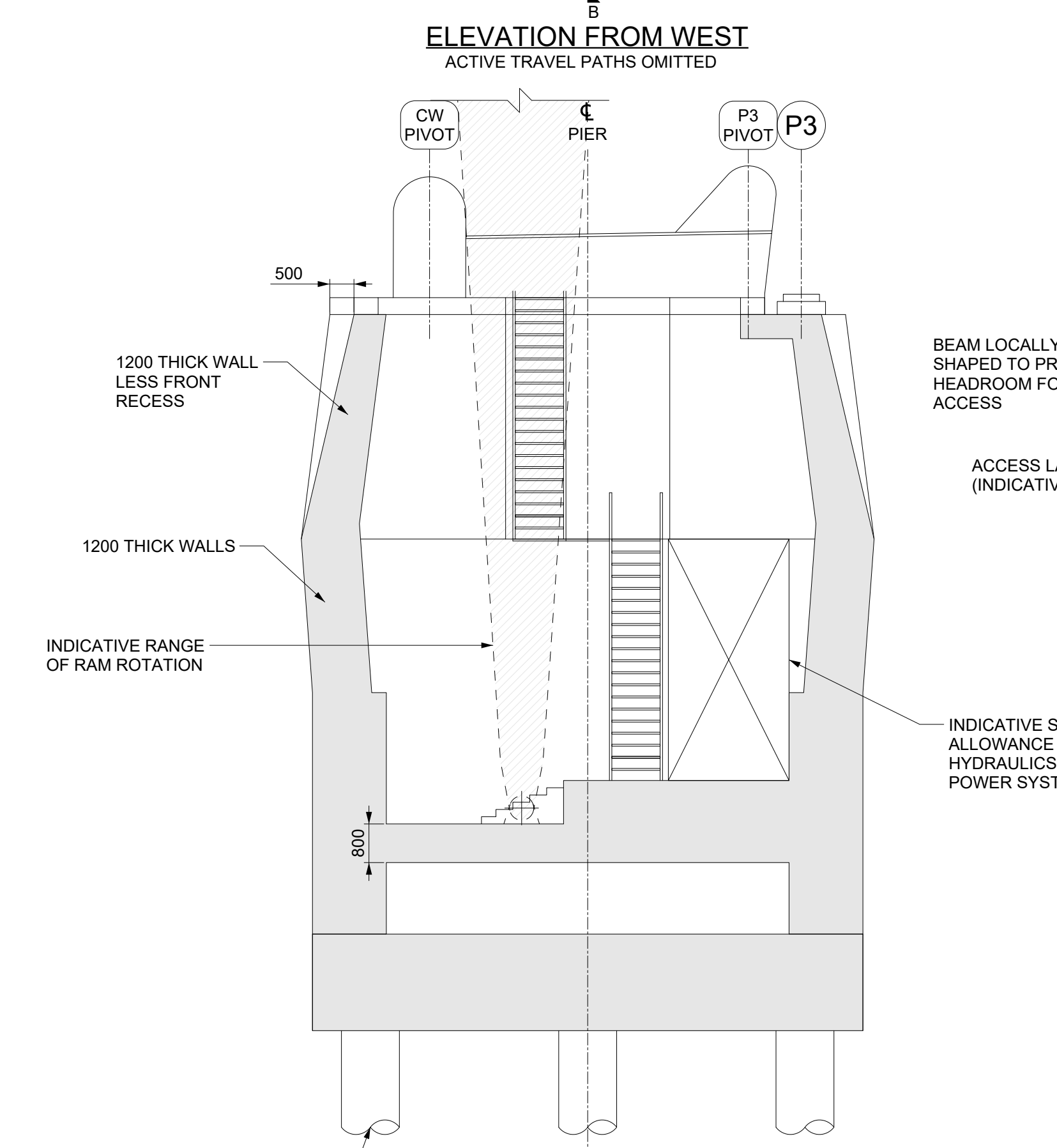
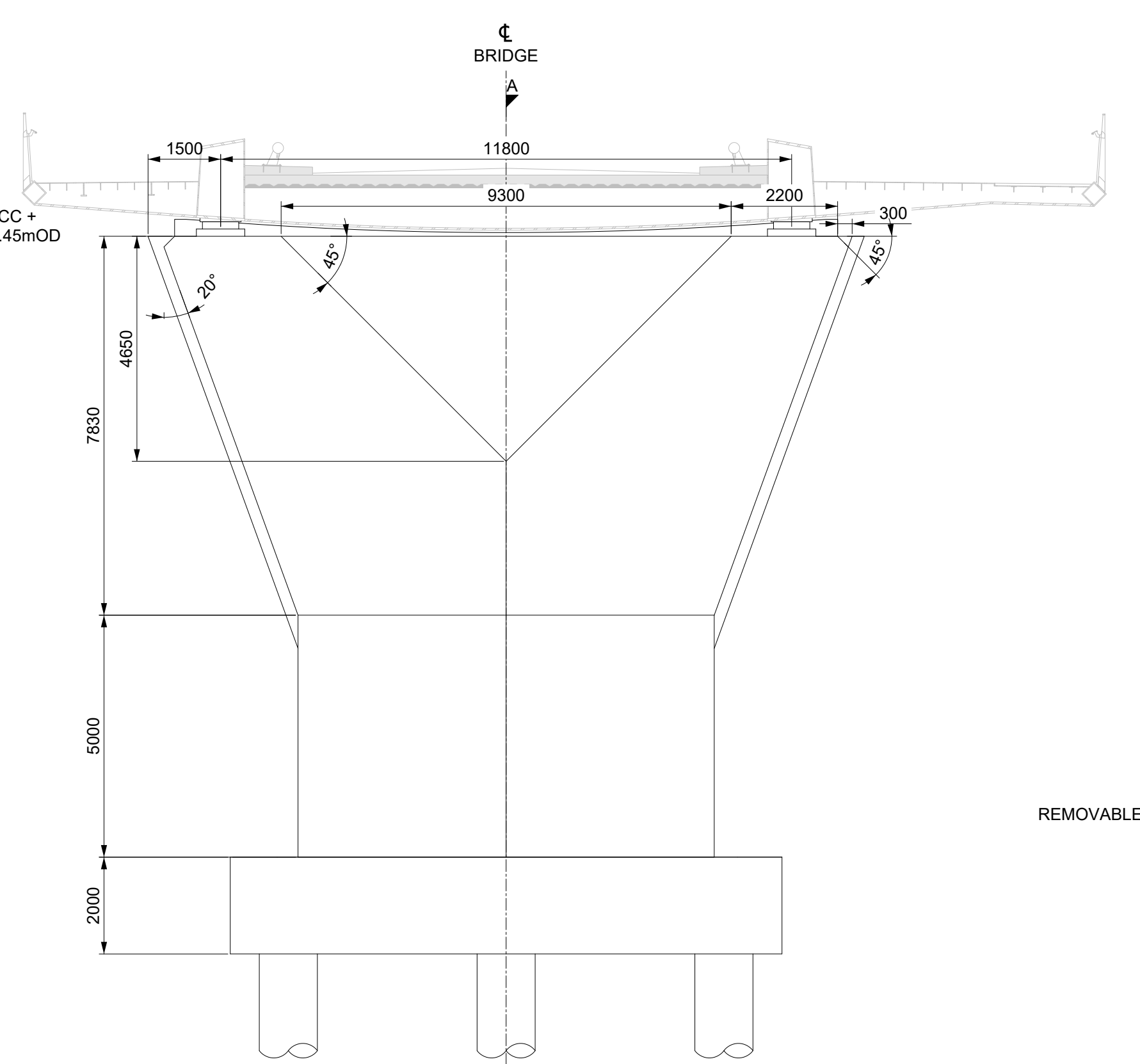


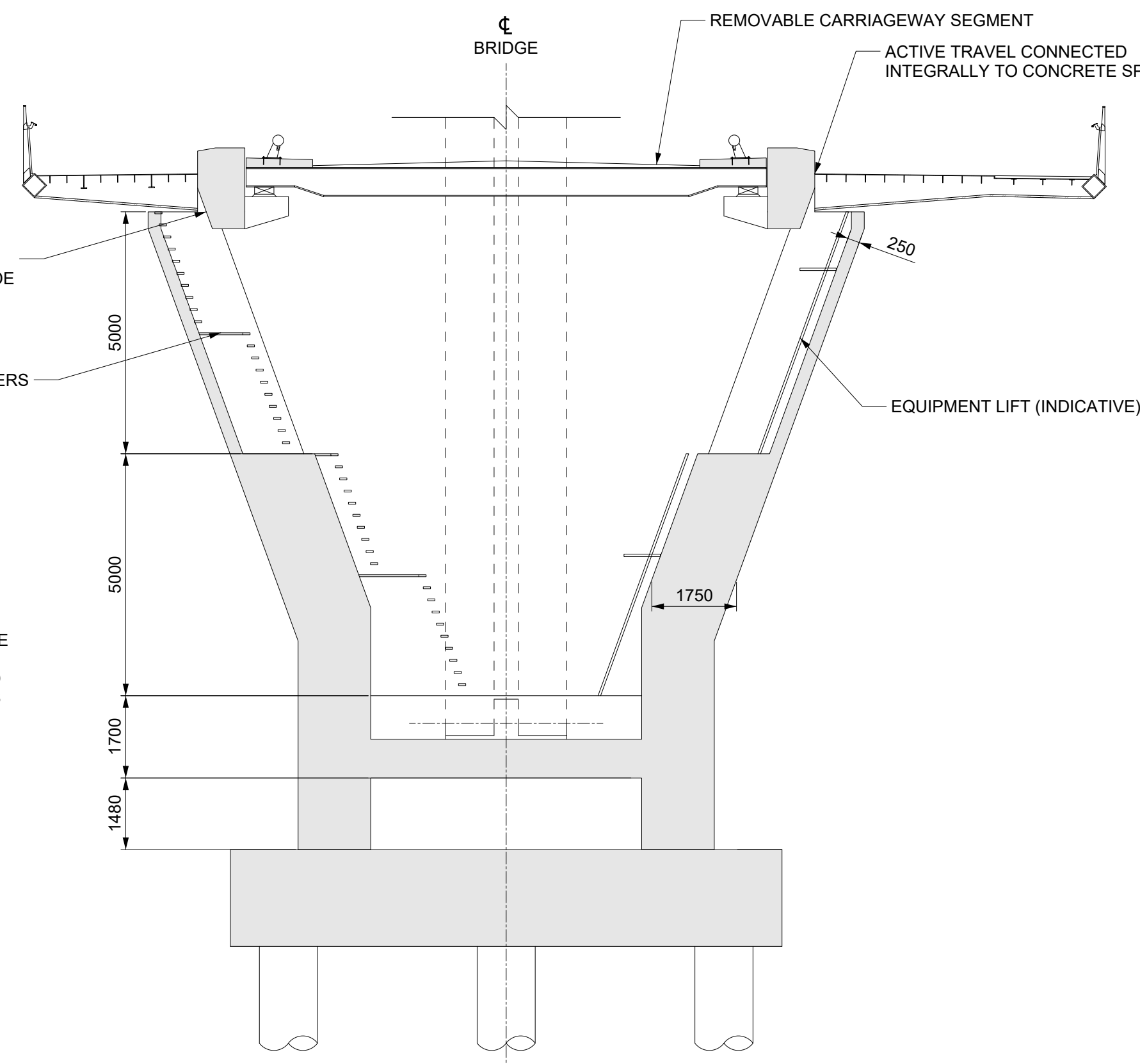
ELEVATION ON PIER TOP FROM NORTH
OTHER DETAILS SIMILAR TO SOUTH FACE



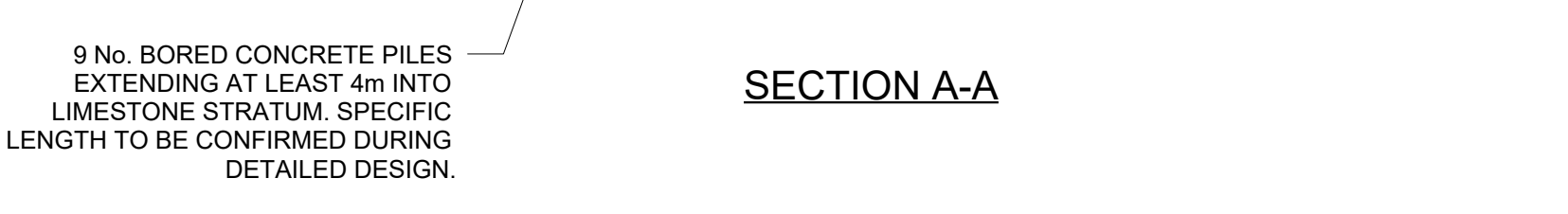
ELEVATION FROM WEST
ACTIVE TRAVEL PATHS OMITTED



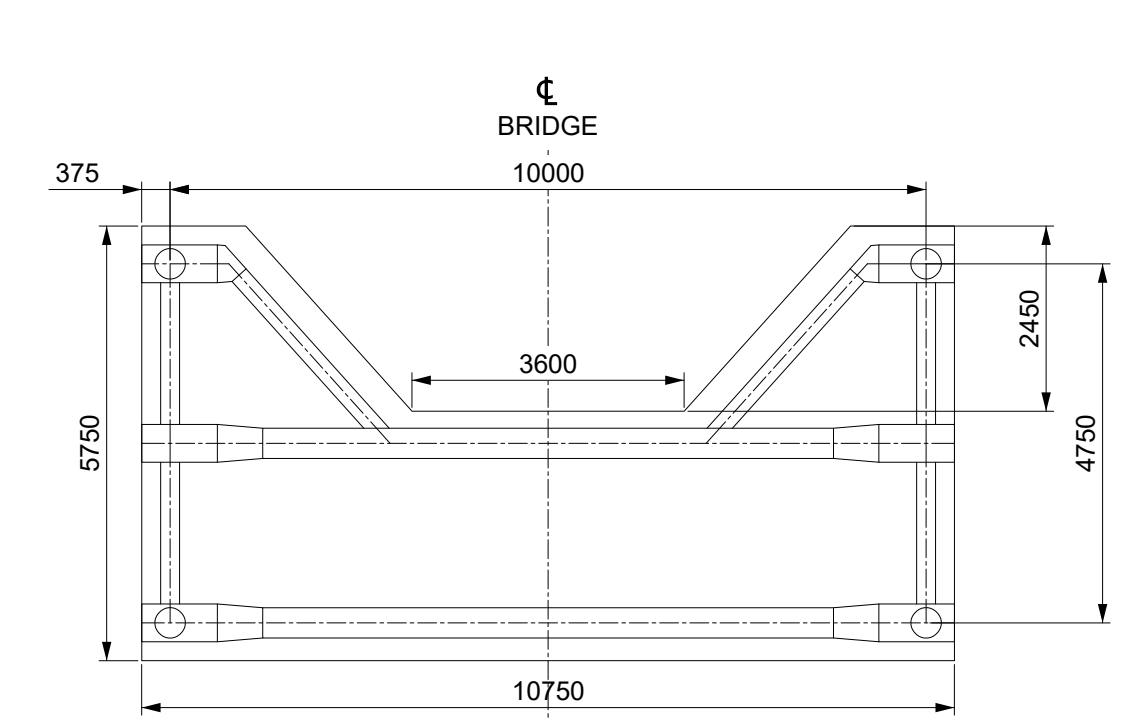
ELEVATION FROM SOUTH



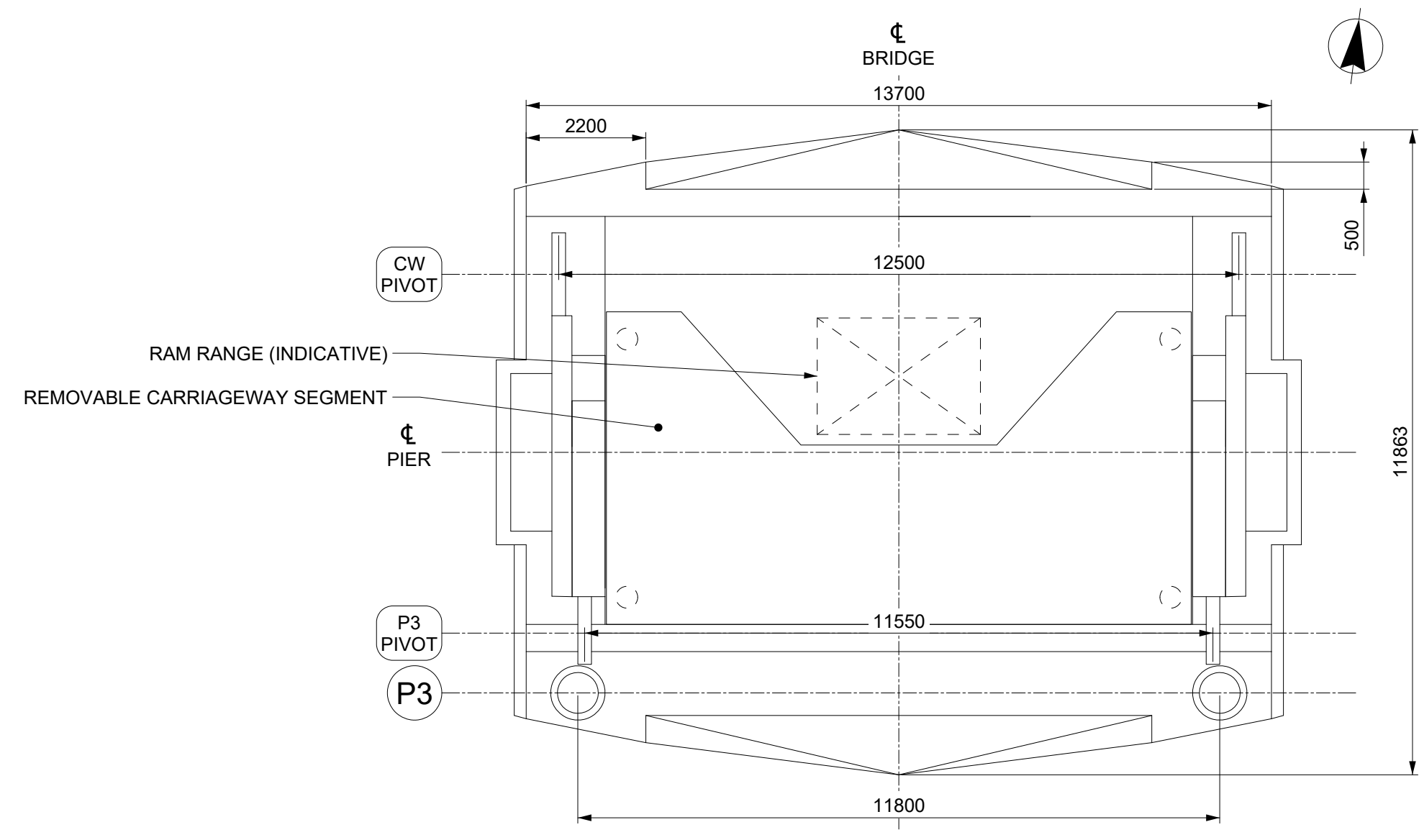
SECTION B-B



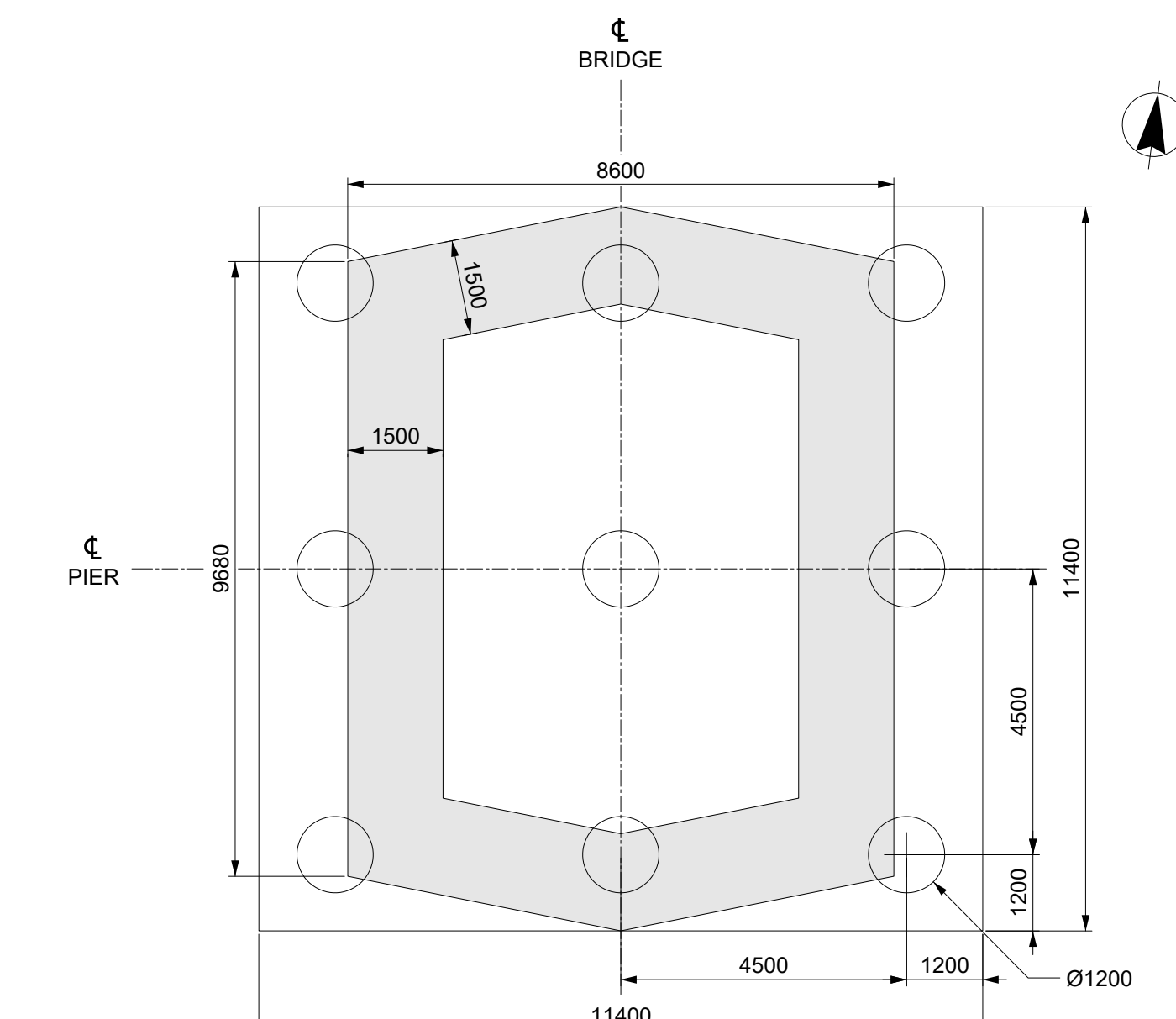
SECTION A-A



SOFFIT PLAN ON REMOVABLE CARRIAGEWAY SEGMENT



PLAN ON PIER TOP



PLAN ON PIER STEM AND PILECAP

- NOTES**
1. These drawings shall be read in conjunction with the Preliminary Design Report, CP1901_3FM-COWI-SBR-SP-RP-S-00002.
 2. Refer to drawing CP1901_3FM-MOXON-SBR-SP-DR-A-00005 for location of pier.
 3. Structural concrete grade C40/50, to be confirmed at detailed design.
 4. Pier heights to ensure sufficient ground cover of pile caps. River bed scour protection details to be confirmed at detailed design.
 5. Pile depths to be confirmed after detailed ground investigations have been conducted at pier locations.
 6. Access arrangements and provision for mechanical and electrical systems are shown indicatively and shall be reviewed at detailed design.

2	Revised for Planning Comments	OLSS	28/06/24
1	Revised for Stage Approval	OLSS	19/04/24
0	First Issue	OLSS	07/11/23
rev	amendments	check	date



Title
SPAR Bridge
Pier 3 (Machine Pier)
Concrete Outline

Project Number	Sheet Size	Drawing Scale
CP1901_3FM	A1	1:100

Drawing Number
COWI-SBR-SP-DR-S-100-00410

Drawn By	Status	Revision
C. Fleming	S4	2

Checked By	Approved By	Date
O. Stross	O. Stross	28/06/2024