

**Luminaire A Data:**

Supplier: Philips  
 Type: BGF704 DW10  
 Lamp(s): LED-HB 5.2S 740  
 Lamp lumens: 23000  
 Light Loss Factor: 0.84  
 Height: 12.0m

**Luminaire H Data:**

Supplier: HESS  
 Type: RENO TOP LIGHT FB 500mA 53W 3000K O3  
 Lamp(s): 5659 LM, 53W  
 Lamp lumens: 5435  
 Light Loss Factor: 0.84  
 Height: 2.0m

**Luminaire I Data:**

Supplier: SIMES  
 Type: C.8020W  
 Lamp(s): Module 21LED Seoul Warm White  
 Lamp lumens: 665  
 Light Loss Factor: 0.84  
 Height: 1.0m

**Luminaire K Data:**

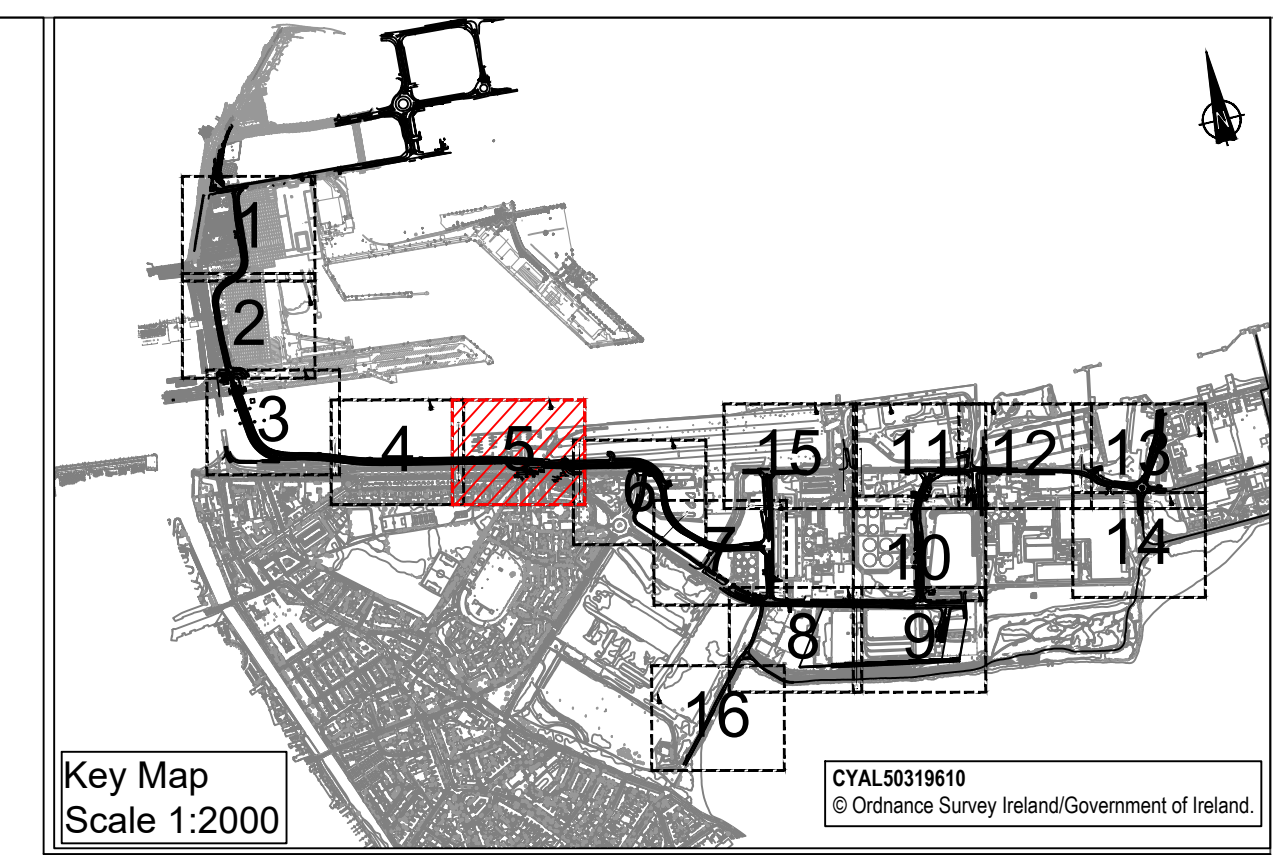
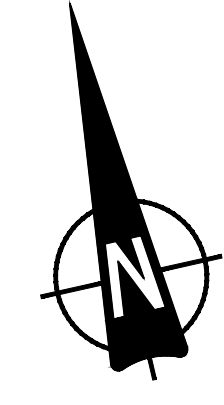
Supplier: RAGNI LIGHTING  
 Type: KASSIO-8L-350mA-3000K-T1  
 Lamp(s): 8L-350mA-3000K  
 Lamp lumens: 956  
 Light Loss Factor: 0.84  
 Height: 2.0m

**Luminaire L Data:**

Supplier: SCULPLINE  
 Type: SCULPLINE R50 6291 Diffuser P25  
 Lamp(s): 5 OSLOM SSL 150@350mA NW 840  
 Lamp lumens: 526 nw 40000K/80  
 Light Loss Factor: 0.84  
 Height: 0.35m

**Luminaire M Data:**

Supplier: SCHREDER  
 Type: ALINEA 5121-3 LED 350mA WW Profiled  
 poly Clear, Smooth WO-7  
 Lamp(s): 3 LED'S  
 Lamp lumens: 367  
 Light Loss Factor: 0.84  
 Height: 1.03m



**NOTES**

1. Verifying Dimensions.  
The contractor shall verify dimensions against such other drawings or site conditions as pertain to this part of the work.
2. Existing Services.  
Any information concerning the location of existing services indicated on this drawing is intended for general guidance only. It shall be the responsibility of the contractor to determine and verify the exact horizontal and vertical alignment of all cables, pipes, etc. (both underground and overhead) before work commences.
3. Issue of Drawings.  
Hard copies, dxf and pdf will form a controlled issue of the drawing. All other formats (dwg, dxf etc.) are deemed to be an uncontrolled issue and any work carried out based on these files is at the recipient's own risk. RPS will not accept any responsibility for any errors arising from the use of these files, either by human error by the recipient, listing of un-dimensioned measurements, compatibility issues with the recipient's software, and any errors arising when these files are used to aid the recipient's drawing production, or setting out on site.
4. Datum: ITM

**LEGEND**

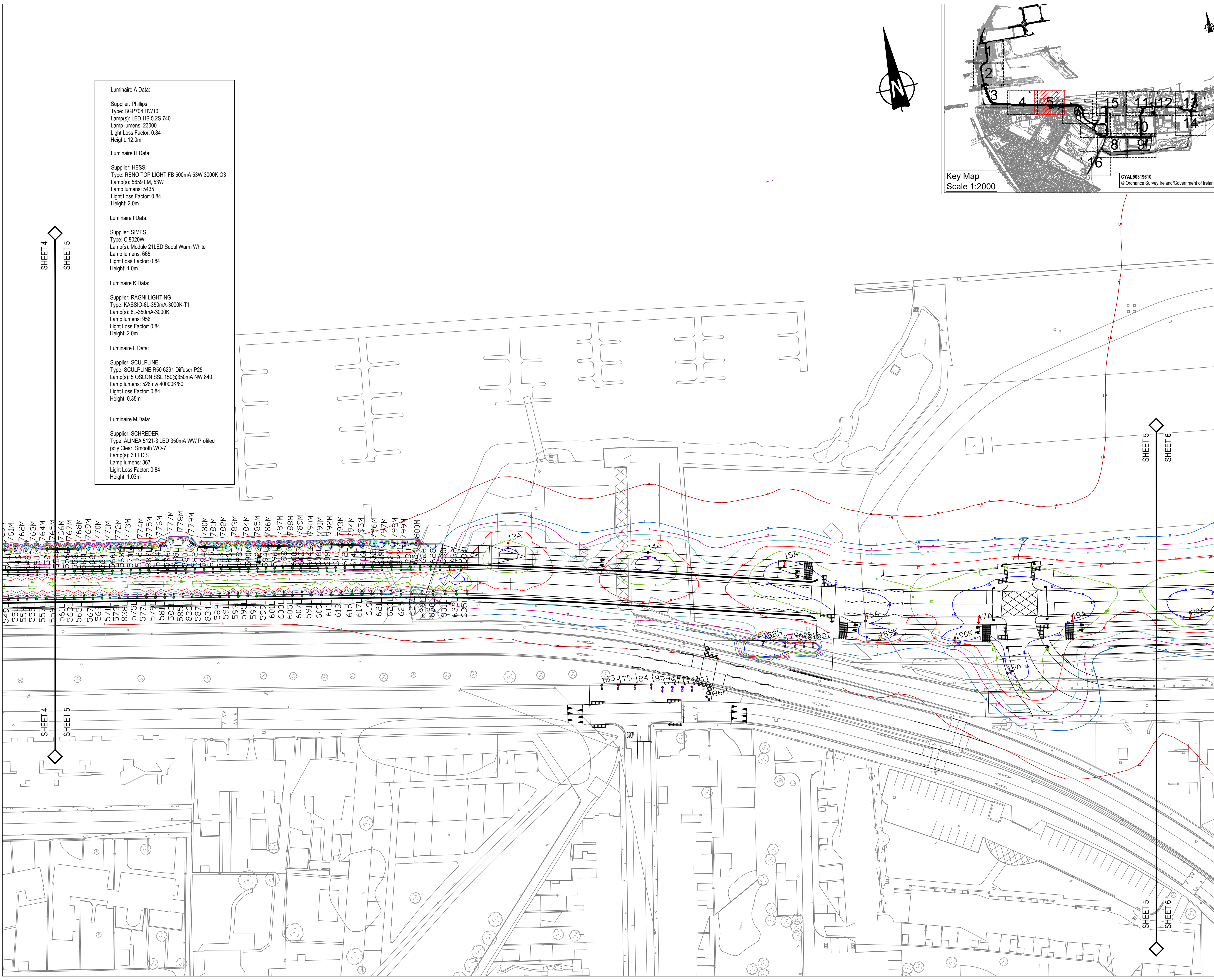
Existing Survey / OS Mapping  
 Proposed Layout

- Luminaire A Column
- Luminaire H Column
- Luminaire I Column
- Luminaire K Column
- Luminaire L Column
- Luminaire M Column

- Mast
- Beam Aiming Target
- Photometric Centre

Contours Lux

- 25 Lux
- 20 Lux
- 15 Lux
- 10 Lux
- 7.5 Lux
- 5 Lux
- 1 Lux



Rev	Date	Drawn	Checked	Amendment / Issue	App
P01	27/06/24	ME	DK	Issue for Planning	DK
C01	18/10/23	ME	DK	Issue for Planning	DK

Client  
  
 ENGINEERING  
 M&S Building Tel. 00 353 1 8555771  
 Bond Road Extension Fax. 00 353 1 8550487  
 Dublin 3

**RPS** MAKING COMPLEX EASY  
 Innishmore, Ballincollig, Co Cork, Ireland.  
 T +353 21 4665900  
 W www.rpsgroup.com/ireland  
 E ireland@rpsgroup.com

Project **3FMProject** Bringing Dublin Port To 2040  
 Title **Roads & Footways (Southern & SPAR) - Proposed Lighting**  
 Sheet 5

Model File Identifier

File Identifier  
 CP1901\_3FM-RPS\_S26-HLG-XX-DR-LE-1300-0005

Created on	18/10/2023	Sheets	1
Scale	1:500 @ A1 1:1000 @ A3	Status	S4
Rev	P01		