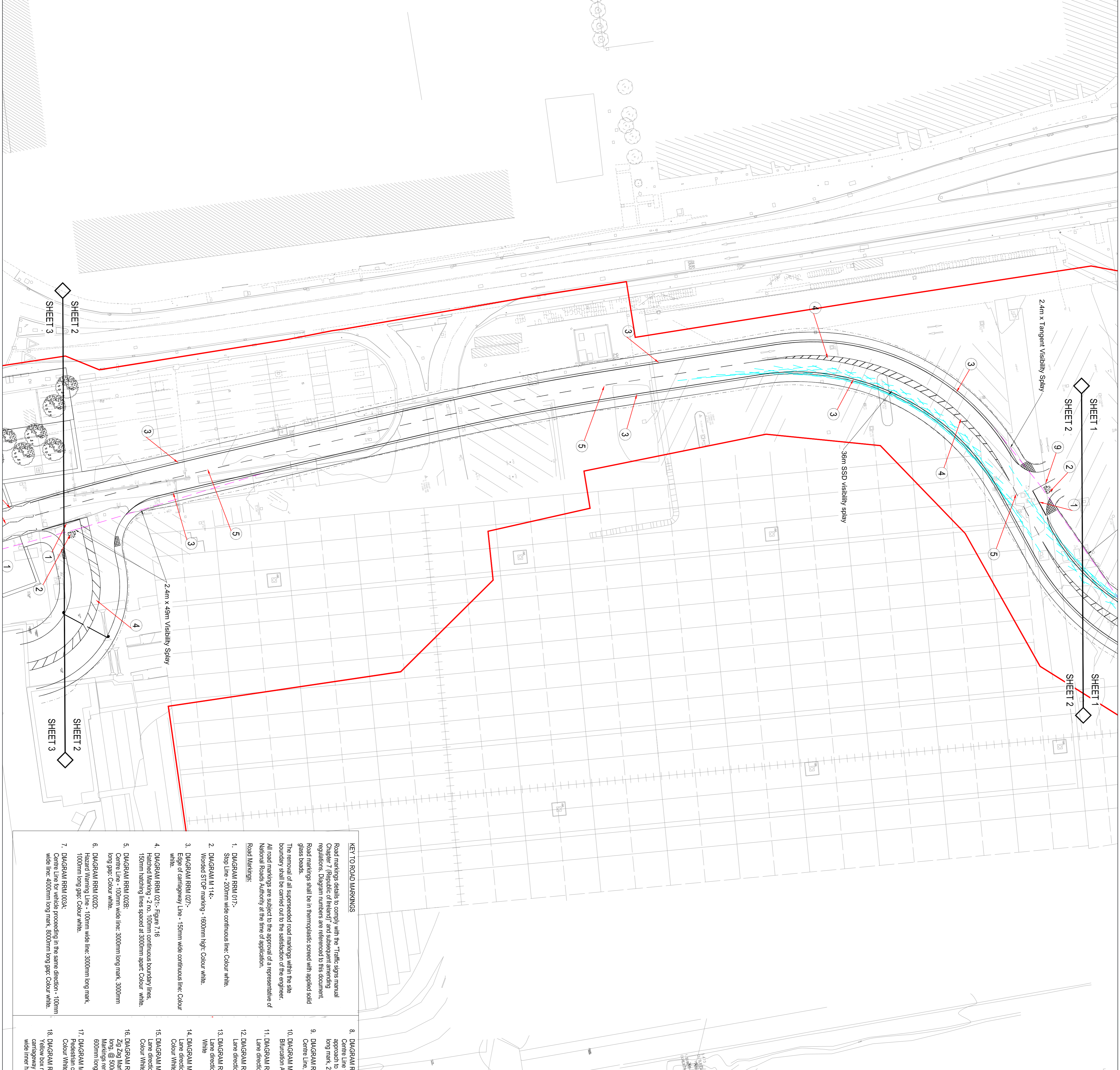
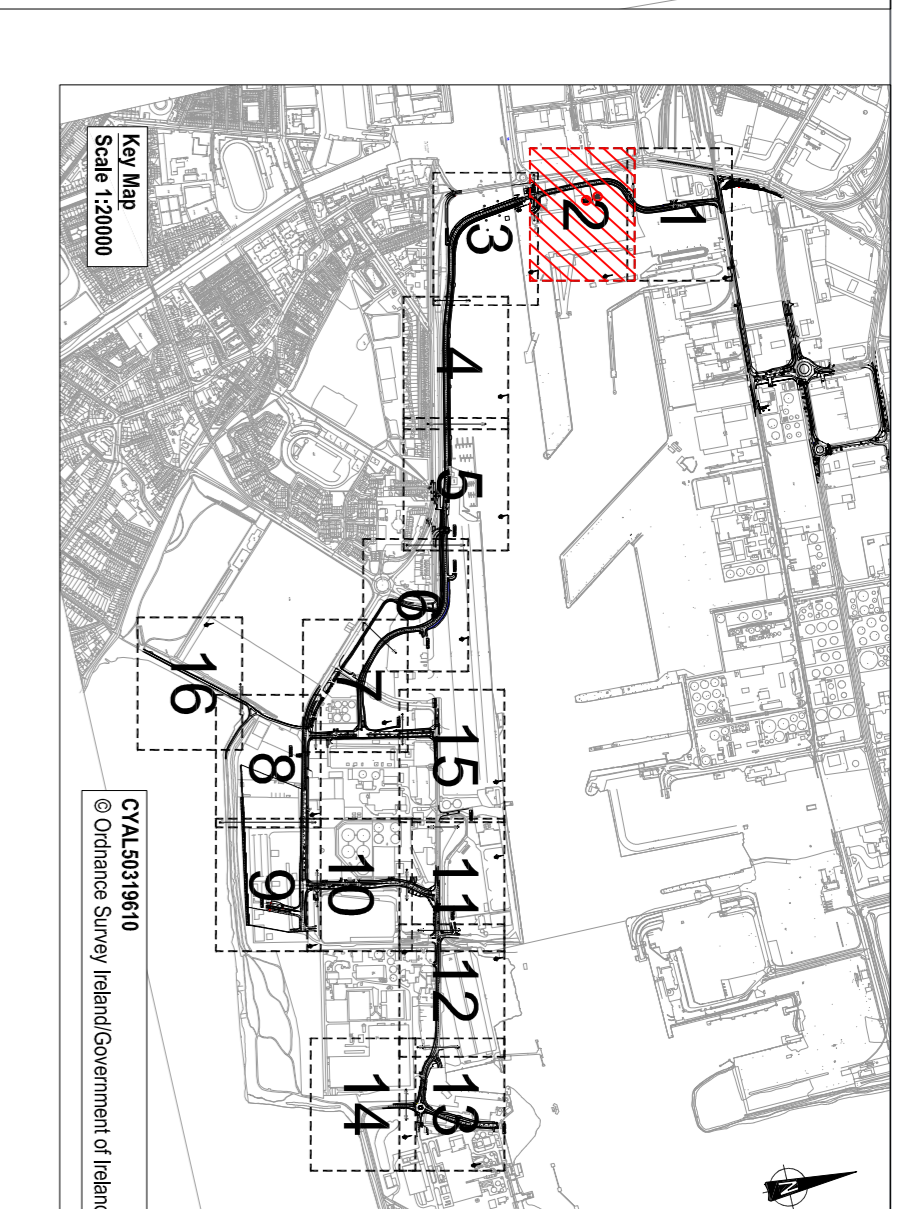
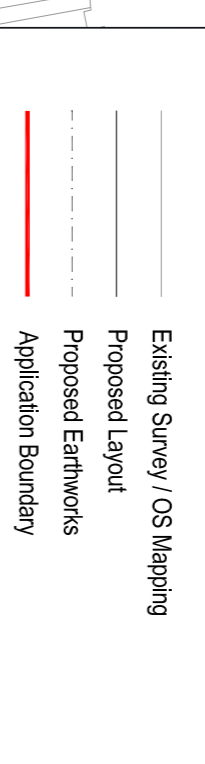


NOTES

1. Verifying Dimensions: The contractor shall verify dimensions against such other drawings or site conditions as pertain to this part of the work.
2. Existing Services: Any information concerning the location of existing services indicated on this drawing is intended for general guidance only. It shall be the responsibility of the contractor to determine and verify the exact horizontal and vertical alignment of all cables, pipes, etc. (both underground and overhead) before work commences.
3. Issue of Drawings: Hard copies, DWG and PDF will form a controlled issue of the drawing. All other formats (JPG, PDF etc.) are deemed to be an uncontrolled issue and any work carried out based on these files is at the recipient's own risk. The contractor shall be responsible for ensuring that any equipment, listing of measurements, compatibility issues with the recipient's software, and any errors arising when these files are used to aid the recipient's drawing production, or setting out on site.
4. OS Map Sheet No
3198-13, 3198-14, 3198-15, 3198-18, 3198-19, 3198-20, 3198-23, 3198-24, 3198-25, 3264-03, 3264-04, 3264-05, 3264-08, 3264-09, 3264-10, 3264-13, 3264-14, 3264-15, 3264-18, 3264-19, 3264-20, 3199-11, 3199-12, 3199-13, 3199-14, 3199-15, 3199-16, 3199-17, 3199-18, 3199-19, 3199-21, 3199-22, 3199-23, 3199-24, 3265-01, 3265-02, 3265-03, 3265-04, 3265-05, 3265-07, 3265-08, 3265-09, 3265-10, 3265-11, 3265-12, 3265-16
5. Datum: T.M



KEY TO ROAD MARKINGS

- Road markings detail to comply with the 'Traffic signs manual Chapter 7 (Republic of Ireland)' and subsequent amending regulations. Diagram numbers are referenced to this document. Road markings shall be in thermoplastic screed with applied cold glass beads.
- The removal of all suspended road markings within the site boundary shall be carried out to the satisfaction of the engineer. All road markings are subject to the approval of a representative of National Roads Authority at the time of application.
- Road Markings:
1. DAGSRM RRM 017:- Stop Line - 200mm wide continuous line: Colour: white.
 2. DAGSRM M 114:- Wounded STOP marking - 150mm high: Colour: white.
 3. DAGSRM RRM 027:- Edge of carriageway Line - 150mm wide continuous line: Colour: white.
 4. DAGSRM RRM 021:- Figure 7.16
Dashed line - 2.1m, 100mm wide continuous boundary line: 150mm hatching lines spaced at 300mm apart: Colour: white.
 5. DAGSRM RRM 028:- Centre Line - 100mm wide line: 3000mm long mark, 3000mm long gap: Colour: white.
 6. DAGSRM RRM 022:- Hazard Warning Line - 100mm wide line: 3000mm long mark, 1000mm long gap: Colour: white.
 7. DAGSRM RRM 024:- Centre Line for vehicle proceeding in the same direction - 100mm wide line: 4000mm long mark, 8000mm long gap: Colour: white.
 8. DAGSRM RRM 008:- Centre Line for vehicle proceeding in the same direction on approach to junction/roundabout - 100mm wide line: 200mm long mark, 2000mm long gap: Colour: white.
 9. DAGSRM RRM 001:- Centre Line, 100mm Continuous single line: Colour: White
 10. DAGSRM M 102:- Bifurcation Arrow - 8000mm Long Arrow: Colour: white.
 11. DAGSRM RRM 005:- Lane direction arrow (left) - 3600mm long arrow: Colour: White
 12. DAGSRM RRM 006:- Lane direction arrow (Right) - 3600mm long arrow: Colour: White
 13. DAGSRM RRM 004:- Lane direction arrow (Straight) - 3600mm long arrow: Colour: White
 14. DAGSRM M 124:- Lane direction arrow (Straight and Right) - 3600mm long arrow: Colour: White
 15. DAGSRM M 125:- Lane direction arrow (Straight and Right) - 3600mm long arrow: Colour: White
 16. DAGSRM RPC 002:- Zig Zag Marking - 8 no. 100mm continuous wide lines, 2000mm long, @ 500mm diagonal width. At the end of the zigzags markings terminate from the crossing at a transverse terminal line, 600mm long by 200mm wide. shall be provided.
 17. DAGSRM M 131:- Pedestrian crossing Line, 2 no. 100mm Continuous single line: Colour: White
 18. DAGSRM RRM 020:- Yellow box marking - Extends across the full width of the carriageway at a road junction. 200mm wide boundary, 150mm wide line height, 200mm spacing.
 19. DAGSRM M 115:- Triangular yield marking - 1250mm wide x 3750mm long: Colour: white.
 20. DAGSRM RRM 018:- Yield Line - 1 no. 200mm wide line: 1000mm long mark, 1000mm long gap: Colour: white.
 21. DAGSRM RRM 019:- No Entry Line - 1 no. 200mm wide, continuous line at junction and 1 broken line 200mm wide 1000mm long every 1000mm gap with 300mm between the two lines: Colour: white.
 22. DAGSRM RRM 023:- Cycle Centre Line - 100mm wide line: 750mm long mark, 750mm long gap: Colour: white.
 23. DAGSRM M 116:- Cycle symbol - 1 no. 2750mm high x 1700mm wide symbol: Colour: white
 24. DAGSRM RRM 021:- Figure 7.16
Chevron Follower Marking - 2 no. 100mm continuous boundary line, 200mm hatching lines spaced at 300mm apart: Colour: white.
 25. DAGSRM RRM 022:- Cycle Edge Line - 100mm wide continuous line: Colour: white.
 26. Stainless steel studs.
 27. Stainless steel studs at 1000mm centers, 100mm x 100mm stainless steel studs at the abandoned Great South Wall (to delineate areas on the abandoned Great South Wall)
 27. DAGSRM RRM 008:- Parking Restrictions (Double Yellow Line) - 2 no. 100mm wide continuous lines, spaced at 100mm apart. Colour: yellow.
 28. DAGSRM M 112:- Traffic Calming Triangles - 750mm wide triangle from bases of hump or cushion, max length of 1850mm. Colour: white.

Project: **3FMProject** Engineering & Construction

Client: **CONHLAIGHT CHALAFORT**
ATHA CLAIH
DUBLIN PORT COMPANY

Title: **Roads & Footways (Southern & SPAR) - Proposed Road Markings and Visibility Sheet 2**

Drawing Number: **CP1901_3FM-RPS_S26-HMK-XX-DR-FE-100-0002**

Drawn By: **DM1** Status: **S4** Revision: **P02**

Checked By: **PN** Approved By: **CDO** Date: **May 2023**

Project Information: **IBH0796** Sheet Size: **A1** Drawing Scale: **1:500**

Revision Log:

Rev	amendments	check	date
P02	Revised for planning submission	JF	25/06/24
P01	Updated for RSA	PN	Aug 23

Contact: **RPS**
Elmwood House, T +44 (0) 20 90 667914
74 Bowdler Road, F +44 (0) 20 90 662285
Belfast, BT12 6XZ, W www.rpsgroup.com/ireland
E ireland@rps.com