

## Maritime Village: Concept Lighting Planning Report



<b>Project title</b>	3FM Project	<b>Job number</b>
<b>Report title</b>	Maritime Village - Concept Lighting - Planning Report	1036912

**Document revision history**

Revision ref	Issue date	Purpose of issue / description of revision
PL01	01 July 2024	Planning Issue

**Document validation (latest issue)**

05/07/2024

05/07/2024

05/07/2024

**X** David Deane

Principal author

Signed by: Darren Kelly

**X** Darren Kelly

Checked by

Signed by: Darren Kelly

**X** William Dolan

Verified by

Signed by: Darren Kelly

## 1.0 Contents

---

<b>1.0</b>	<b>Contents</b>	<b>2</b>
<b>2.0</b>	<b>Project Overview</b>	<b>3</b>
2.1	Introduction	3
2.2	Maritime Village Overview	3
2.3	Appendices	4
<b>3.0</b>	<b>Maritime Village</b>	<b>5</b>
3.1	Maritime Village Buildings and areas	5
3.2	Lighting Standards and Guidelines	5
3.3	Lighting Design Criteria	5
3.4	General Lighting Design Values	6
3.5	Environmental Issues	6
3.6	Proposed Lighting Installation	7
3.7	Proposed Luminaire Types	13
<b>4.0</b>	<b>Appendix 1 – Drawing Register: Maritime Village Concept Lighting</b>	<b>19</b>
<b>5.0</b>	<b>Appendix 2 – Planning Drawings: Maritime Village Concept Lighting</b>	<b>20</b>

---

## 2.0 Project Overview

---

### 2.1 Introduction

This Concept Lighting planning report has been prepared in support of an application for the 3FM Project being submitted by Dublin Port Company Ltd., focusing in particular on the proposed new Maritime Village site which forms one part of the overall development. The 3FM Project represents the concluding phase of the Masterplan initiatives essential for realizing Dublin Port's full potential by 2040. The project primarily centres on the Dublin Port Company owned lands situated on the Poolbeg Peninsula, which constitutes one-fifth of the entire Dublin Port estate and is commonly referred to as the southern port area.

The proposed development site for the new Maritime Village is located on the western end of the Poolbeg Peninsula in Dublin 4. It is bounded by the East Link Road and Pigeon House Road to the south, the existing Dublin Port container terminal to the east, the Liffey channel to the north, and the existing Poolbeg marina to the west. The new site will cover approximately 1.8 hectares and will combine two areas: the current boat club site, home to Stella Maris Rowing Club, Poolbeg Yacht & Boat Club, and the Ringsend Registered Fishermen & Private Boat Owner's Association facilities, and part of the adjacent MTL container terminal.

The proposed Maritime Village will offer a new city destination for boating and rowing activities, building upon the established uses fostered by local clubs, which are an integral part of the Ringsend community.

The development includes several key enabling actions. These actions involve demolishing the two existing clubhouses and all other associated structures on the club site, relocating existing boat storage areas, decommissioning the existing marina, and forming the new 1.8-hectare site by incorporating part of the adjacent container terminal site. Part of the existing club site will be surrendered for the construction of the new Southern Port Access Route (S.P.A.R) and the adjacent Active Travel Route, and new quay walls will be constructed on the western extent of the site.

The new site will feature three dedicated two-storey club buildings for the Poolbeg Yacht & Boat Club, Stella Maris Rowing Club, and a new Maritime Training Centre, with a combined area of approximately 2,364 SqM. Additionally, it will include a 1.5-storey boat maintenance facility with integrated amenities for the Ringsend Registered Fishermen & Private Boat Owner's Association and Liffey & Port Marine Services, totalling 1,069 SqM. A five-storey Dublin Port Company Ltd. Harbour Operations building with 1,670 SqM of floorspace, including a fourth-floor function room, will also be part of the site.

The waterside amenities will comprise a new 258-berth marina, a dedicated boat launch area for the rowing club, a new slipway and boat lifting facilities, dedicated pontoons for Dublin Port Company Ltd. Harbour Operations, a new fuel berth, and all associated gangway and pontoon access infrastructure.

The project also includes 87 car parking spaces, 148 bicycle parking spaces, dedicated waste storage facilities, a new secure boat storage yard covering 3,965 SqM, two new vehicular entrances, and a new pedestrian crossing for improved site access. Additionally, there will be new publicly accessible landscaped open spaces, new boundary treatments and ISPS fencing where necessary, and associated landscaping, lighting, and site services works.

Overall, this project aims to build on the longstanding traditions established by local clubs and provide enhanced modern facilities for maritime activities, creating a welcoming hub for the club members, the local community and visitors alike.

### 2.2 Maritime Village Overview

Section 3.0 and beyond of this Report provides details of the lighting design proposed as part of the Maritime Village element of the 3FM Project, consisting of illumination of village precincts, boatyards, carparks and slipway located on the south bank of the river Liffey in Ringsend.

Section 3.1 provides details of the concept lighting design for the exterior of various buildings and other outdoor areas in the maritime village, including clubs, public spaces, car parks, and a boat yard. It does not cover internal building spaces.

Section 3.2 provides details on several lighting standards and guidelines that have been applied, including IS EN 12464-2:2014, IS EN 12665:2018, BS 5489-1: 2013, and various CIBSE SLL codes and handbooks.

Section 3.3 showcases how the lighting is designed to ensure safe movement of people and boats. Different illumination requirements are set for the quay/water's edge and the roads and car parks.

Section 3.4 conveys the different lighting design criteria that are proposed for different locations such as the edge of quays, car parks, boat yard, and roads.

Section 3.5 considers environmental issues of the design like light pollution, damage due to the impact of a maritime environment on the installation, disturbance to wildlife, and energy usage.

Section 3.6 provides details on the proposed lighting installations which include recessed continuous LED linear luminaires, uplighting the beams from first floor level, and LED flood lights mounted on poles of varying heights. Special features like the Feature Crane structure and the Seafarer's Memorial will be illuminated uniquely. The Sunken Area and the Slipway will also have specific lighting arrangements.

Section 3.7 provides details of the proposed luminaire fittings that are proposed to be installed.

## **2.3 Appendices**

This section includes the appendices, which provide additional information and data that support the main content of the document.

Section 4.0: This section showcases the comprehensive drawing register for the 3FM Maritime project, providing a detailed list of all the drawings that have been created and used throughout the project.

Section 5.0: This section displays the planning drawings for the 3FM Maritime project, which have been developed to guide the project's execution and to ensure all aspects of the project are well-planned and organized as well as offering a visual representation of the project's design and layout.

## 3.0 Maritime Village

---

### 3.1 Maritime Village Buildings and areas

The maritime village consists of several buildings and areas as follows:

- Stella Maris Club Building
- Poolbeg Club Building
- Nautical Trust Building
- Harbour Operations Building
- Shared Boat Maintenance & Worksop Facilities
- Seafarer's Memorial
- Public Spaces
- Public Event Spaces
- Car Parking
- Feature Crane
- Sunken Area
- Slipway
- Boat Yard

This section of the report only refers to the external spaces and not to the internal building spaces.

### 3.2 Lighting Standards and Guidelines

The lighting standards and guidelines that were applied are set out below:

- IS EN 12464-2:2014 Lighting of Workplaces: Outdoor Workplaces
- IS EN 12665:2018 Light and Lighting – Basic Terms and Criteria for Specifying Lighting Requirements
- BS 5489-1: 2013 – Code of Practice for the Design of Road Lighting Part 1: Lighting of Roads and Public Amenity Areas
- CIBSE SLL Code of Lighting 2012
- CIBSE SLL Lighting Handbook 2018
- CIBSE SLL Lighting Guide 6 – Exterior Lighting
- HSA Regulations for Electricity
- IS 10101 National Wiring Regulations

### 3.3 Lighting Design Criteria

The purpose of the lighting is to provide illumination for the safe movement of people, for recreation and launching boats.

The requirements for illumination along the quay/water's edge is different to that for the roads and car parks.

It is assumed that the traffic in the car parks and roads would be slow moving and would be termed medium traffic level in accordance with IS EN 12464-2.

The illumination of the quay/water's edge would be provided off the adjacent buildings to be less intrusive.

The harbour operations building, it is intended to provide illumination from the underside of overhangs, using the buildings unique form.

The quay side crane structure is an iconic Dublin Dockland piece of industrial archaeology and would be provided with a lighting installation to make it a feature of the site.

### **3.4 General Lighting Design Values**

As each location will have different requirements, the criteria for each will be different.

Set out below are the proposed lighting design criteria for the different locations.

#### **Edge of Quays**

- 30 Lux as per Dublin Port Company requirements

#### **Car Parks**

- 10 Lux
- 0.25 Uniformity
- Glare 50
- CRI 20

#### **Boat Yard**

- 50 Lux
- 0.40 Uniformity
- Glare 50
- CRI 20

#### **Roads**

- 10 Lux
- 0.40 Uniformity
- Glare 50
- CRI 20

### **3.5 Environmental Issues**

The following issues relating to environmental issues have been considered during the design:

- Light pollution
- Damage to the installation due to a maritime environment
- Disturbance to the wildlife
- Energy usage

The issue of light pollution has been addressed by applying illumination levels that are not excessive and provide a reasonable Lumen/Watt. The light distribution of the luminaires will be carefully chosen to reduce ULR to a minimum and to limit the spread illumination out of the confines of the project area.

The colour temperature of the LED sources will not be greater than 3000<sup>0</sup> K to reduce the effect of glare and to provide a reasonable colour rendering.

The proposed design will consider the effect of a maritime atmosphere.

The fall off in lighting levels in the areas adjacent will assist in reducing the impact of the lighting installation on wildlife such as bats and fowl.

### 3.6 Proposed Lighting Installation

The proposed lighting installations at the quay side/ water's edge will be provided by recessed continuous LED linear luminaires recessed into the underside of the first-floor concrete slab and the underside of the roof soffit for the Stella Maris Club Building, Poolbeg Club Building and the Nautical Trust Building. These buildings will also be illuminated on the outside by uplighting the beams from first floor level.

The Shared Boat Maintenance & Workshop Facilities building will be illuminated on the outside by uplighting the beams from the height of the upper glazed section using LED up lights luminaires.

The Port Operation Building unique shape will be picked out by installing linear LED luminaires under the building overhangs that are a feature of the building at different floor levels.

The Feature Crane structure will be illuminated by recessed linear LEDs into the structure to make the shape stand out similar to the historic crane in the Port Centre.

The front car park will be illuminated by LED luminaires mounted on 6-meter poles. The rear car park will be illuminated by LED luminaires mounted on 8-meter poles.

The Boat Yard will be illuminated by LED flood lights mounted on 12-meter poles.

The Seafarer's Memorial will be illuminated by LED feature luminaires when more information is available on the memorial.

The Sunken Area will be provided with illumination by directional flood lights on the feature crane.

The Slipway will be illuminated from luminaires fitted to the handrail adjacent to the slipway on the upper quay side.



Figure 1 - Maritime Village



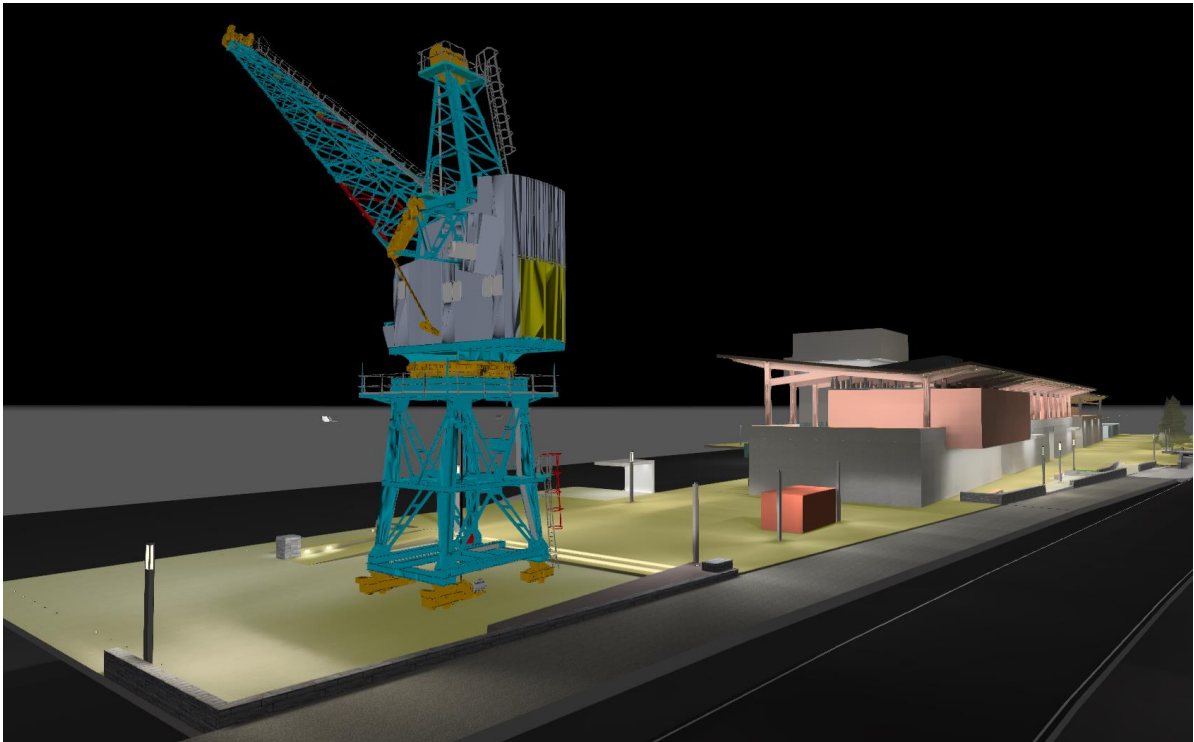


Figure 2 Maritime Village - Crane

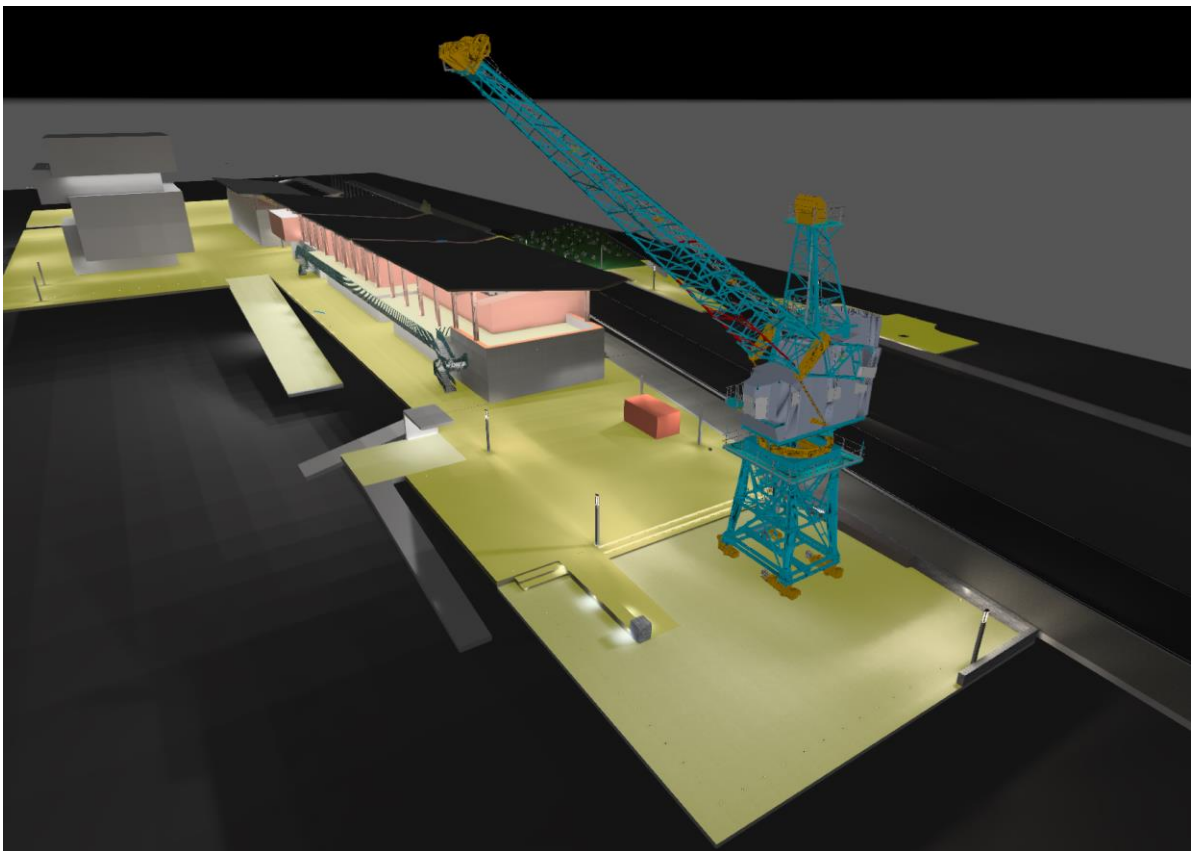


Figure 3 - Maritime Village - Sunken Area



Figure 4 - Maritime Village

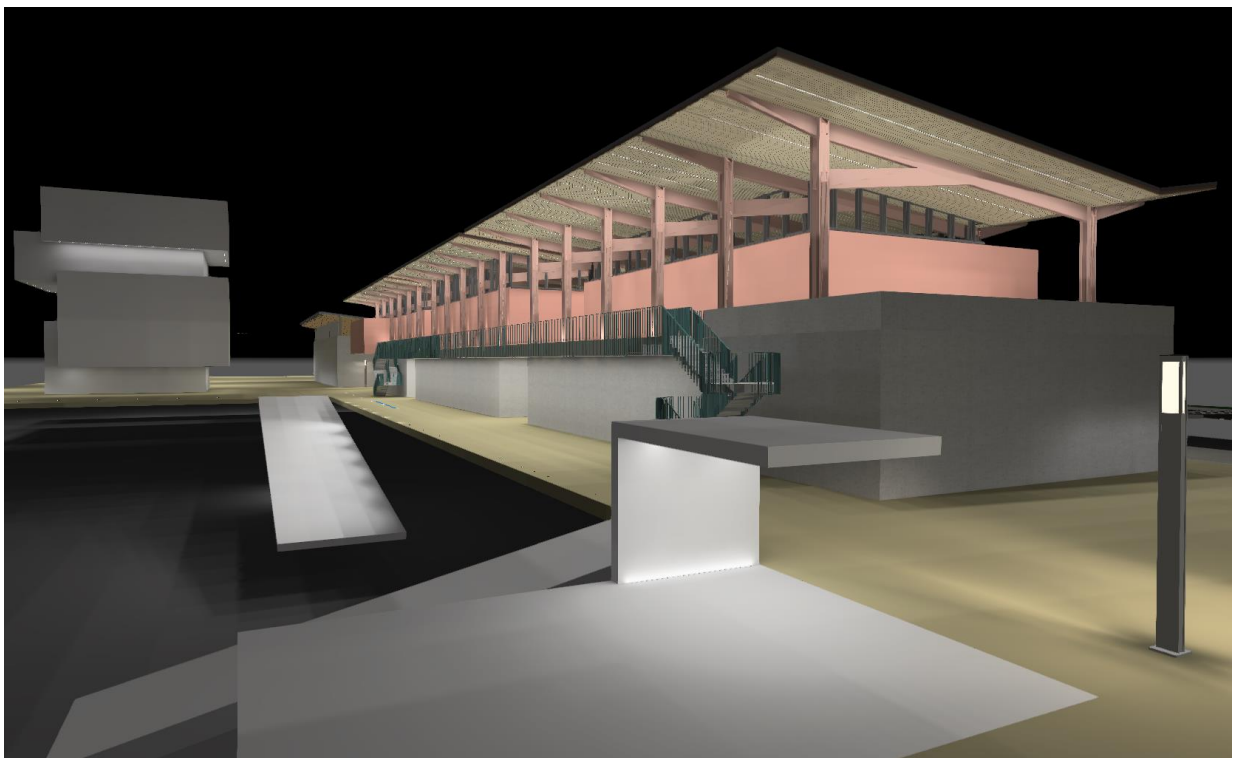


Figure 5 Maritime Village

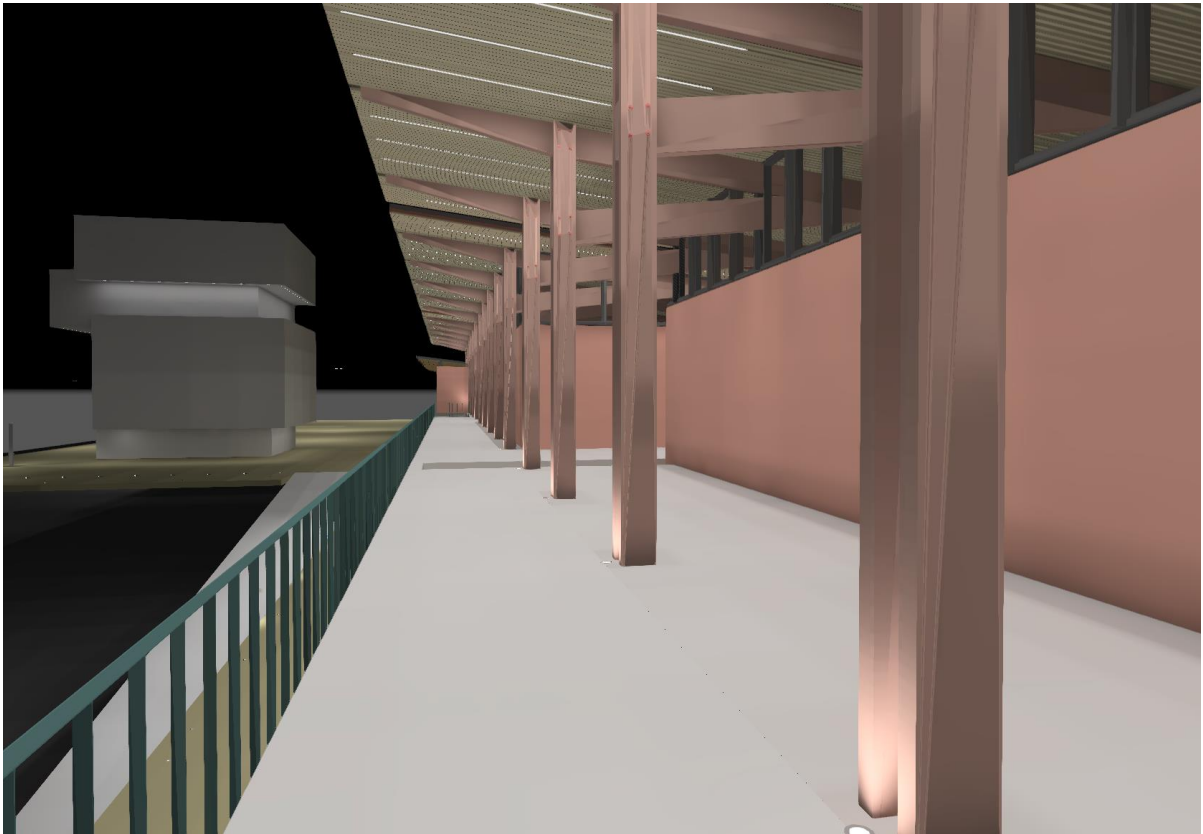


Figure 6 Maritime Village - Column Up-lights



Figure 7 - Maritime Village

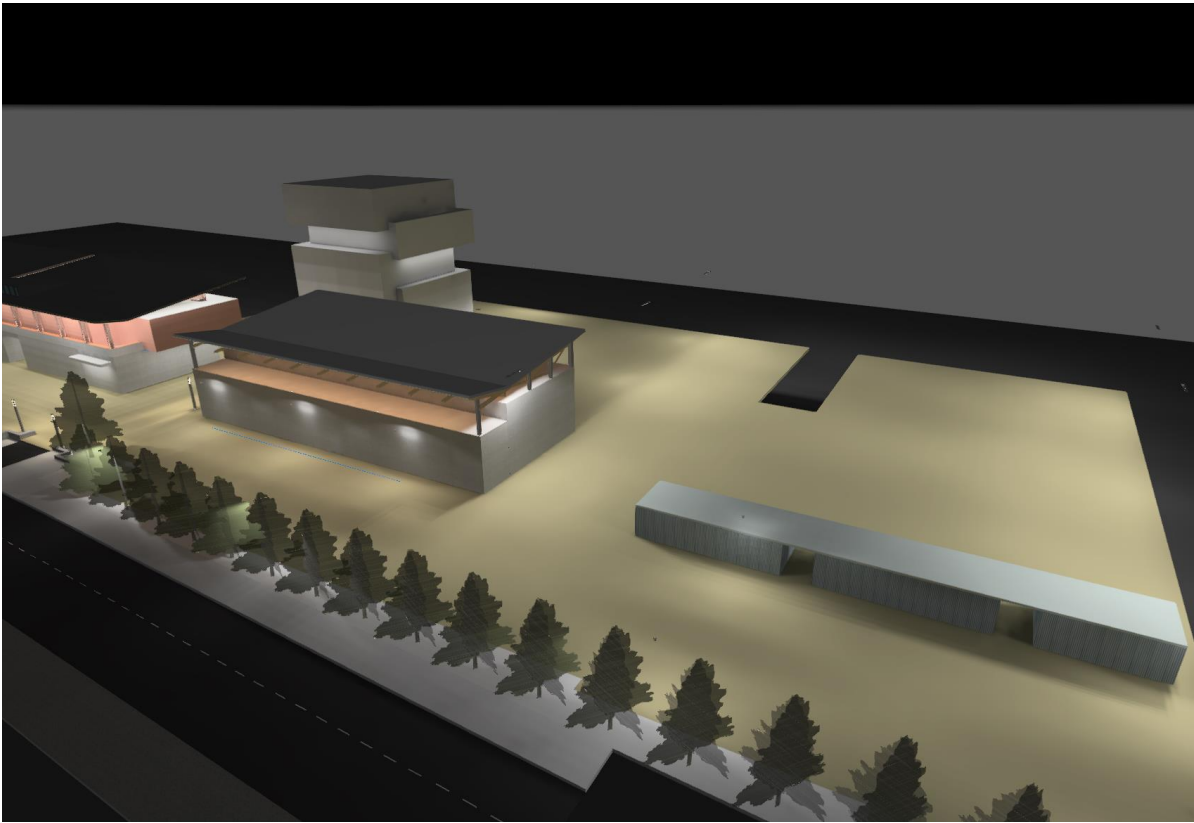


Figure 8 - Boat Maintenance Building & Yard



Figure 9 - Maritime Village

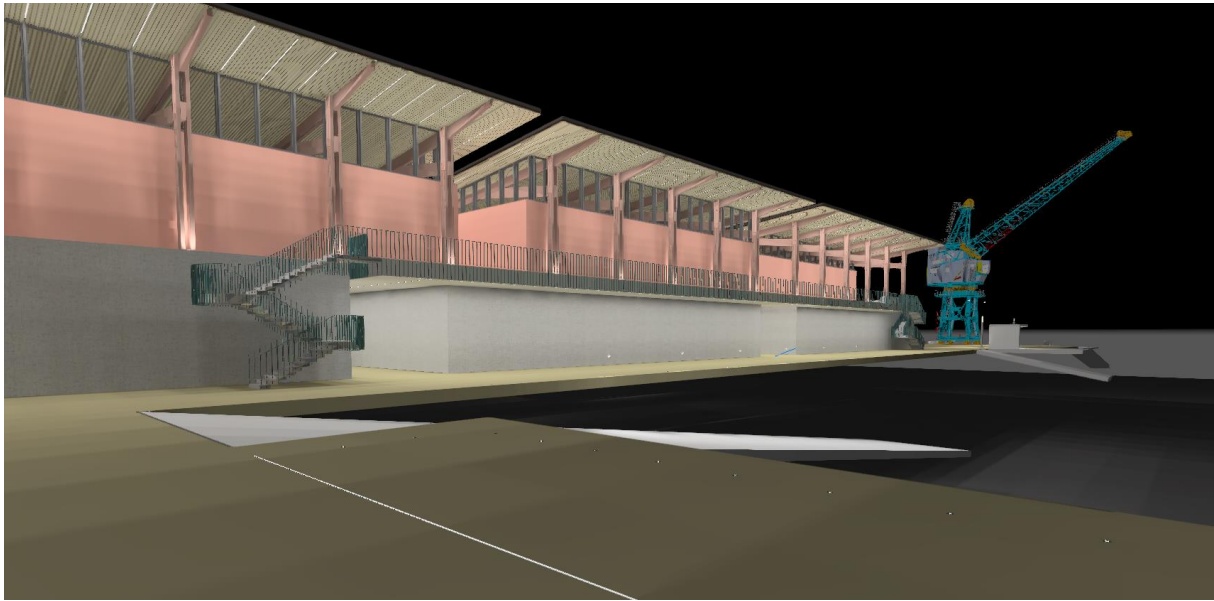
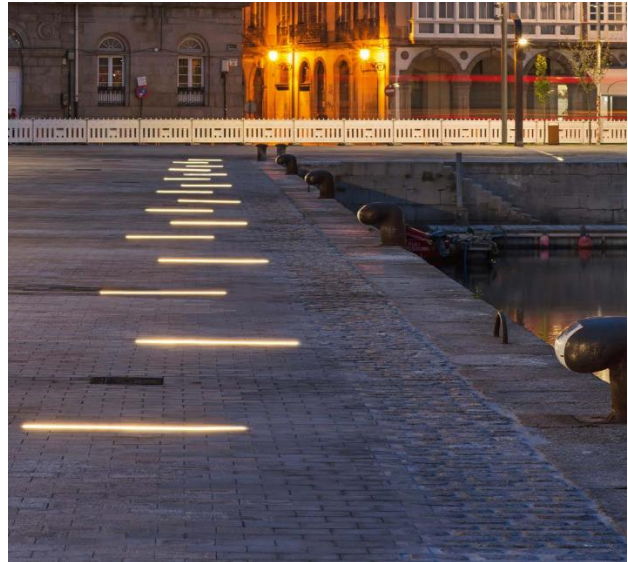


Figure 10 Maritime Village



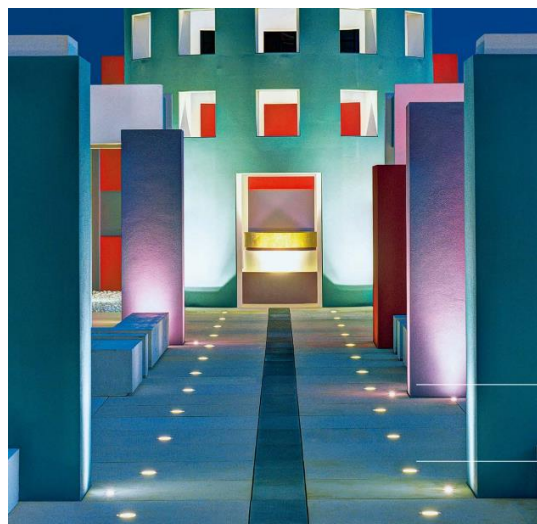
Figure 11 Maritime Village

### 3.7 Proposed Luminaire Types



Rio - Luce & Light 2.4 IP67 IK10 - 2100mm x 37mm x 56mm

Location: Maritime Villiage – Underside of Roof and Balconies



Corso - Luce & Light 1.0 IP69 IK08 - 85mm x 108mm x 69mm

Location: Maritime Villiage - Guard Rail Up-Lighting



Corso - Luce & Light 3.0 IP69 IK08 - 148mm x 112mm x 124mm

Location: Maritime Villiage – Building Column Up-Lighting



Rio - Luce & Light 1.3 IP67 IK10 - 1510mm x 20mm x 53mm

Location: Maritime Villiage – Inground Strip Lighting



Post-top version

Antina - Veelite IP66 IK08 - 600mm x 239mm x 60mm

Location: Maritime Villiage – Front Carpark



Metro Flood - Veelite IP66 IK08 - 427mm x 594mm x 94mm

Location: Maritime Villiage – Boatyard





Solo Area - Veelite IP66 - 600mm x 700mm x 193mm  
Location: Maritime Villiage – Boatyard Carpark & Boatyard



Metro Streetlight - Veelite IP66 IK 09 - 625mm x 290mm x 105mm  
Location: Maritime Villiage – Boatyard & Harbour Operations Building Carpark



Faro - Veelite IP65 IK 07 - 200mm x 200mm

Location: Maritime Villiage Slip way



Faro – Luce & Light IP66 IK 08 - 109mm x 179mm

Location: Maritime Villiage – Boat Maintenance Coloum Up-lighting



Mega Stage – Simes IP66 IK07 - 625mm x 290mm x 105mm

Location: Maritime Villiage – Public Event Space & Sunken Area – Crane Mounted



Proposed Crane Lighting will be similar to the Port Centre crane as above.

## **4.0 Appendix 1 – Drawing Register: Maritime Village Concept Lighting**

---



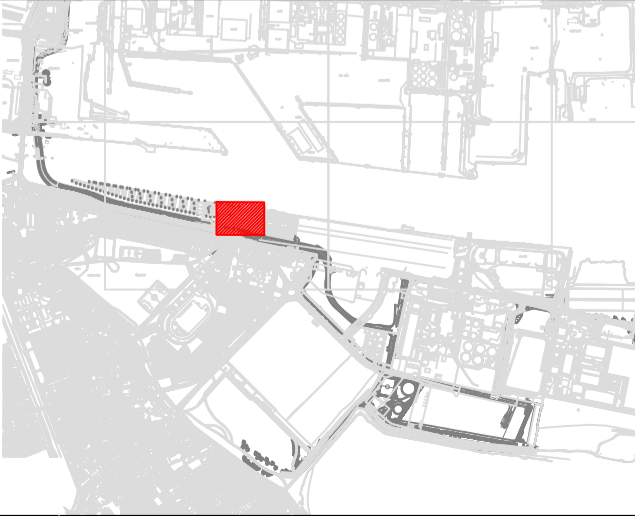
## **5.0 Appendix 2 – Planning Drawings: Maritime Village Concept Lighting**

---



**A1**

**NOTES:**  
 1. THIS DRAWING SHALL BE READ IN CONJUNCTION WITH ALL RELEVANT ARCHITECTURAL, STRUCTURAL AND ENGINEERING SERVICES DRAWINGS, SPECIFICATIONS, SCHEDULES AND PROJECT SPECIFIC DOCUMENTS.  
 2. ALL PLANT AND EQUIPMENT IS TO BE INSTALLED TO MANUFACTURER'S RECOMMENDATIONS, ALLOWING FULL ACCESS FOR COMMISSIONING, MAINTENANCE AND REMOVAL/REPLACEMENT.  
 3. ALL DIMENSIONS IN mm UNLESS OTHERWISE STATED.  
 4. DO NOT SCALE FROM THIS DRAWING.  
 5. FOR SYMBOLS SEE DRAWING XXXX(X)XXXX.



**MARITIME VILLAGE LEGEND:**

	CORSO 3.0		RIO 2.4D 34W RGB
	SIMES S.P.A. GHOST RECESSED WALL LIGHT		RIO INGROUND STRIP LIGHT - 1510mm
	SPOT 4.4		RIO INGROUND STRIP LIGHT - 1010mm
	RENO HESS POLE LIGHT 180 DEGREES		RIO INGROUND STRIP LIGHT - 510mm
	RIO UNDER BALCONY STRIP LIGHT		RIO INGROUND STRIP LIGHT - 260mm
	ATTINA STREET LIGHT		KASSIO BOLLARD
	METRO FLOODLIGHT		METRO STREET LIGHT
	RENO ELEMENTS HESS POLE LIGHT 360 DEGREES		SOLO AREA LIGHT
	CORSO 1.0		MEGASTAGE LED OSARAM DURIS SS
	STRA 2.0 INGROUND UPLIGHT		FARO LED WIDE BEAM
			LUX LEVEL ON SURFACE

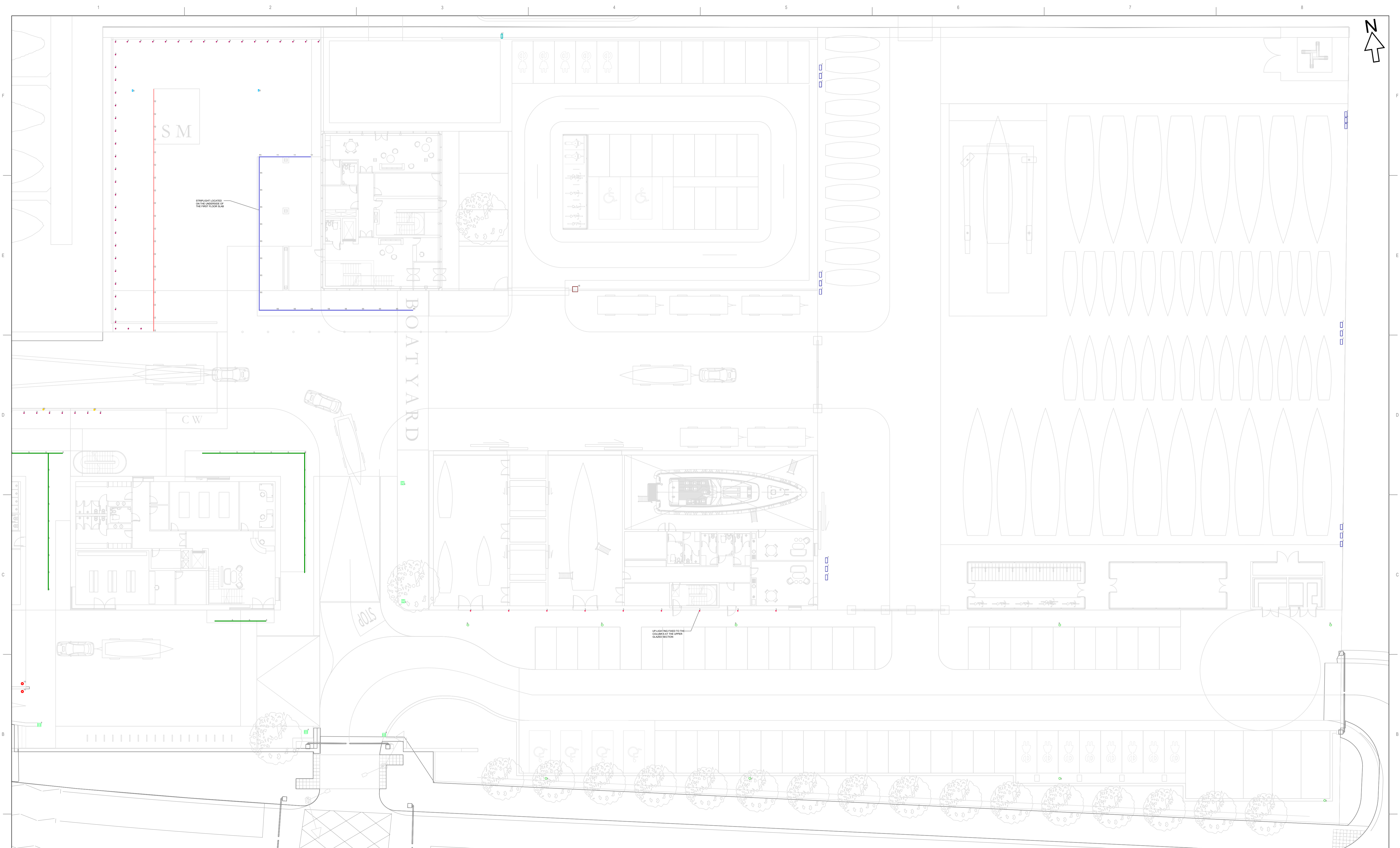
Project		3FM PROJECT	
Client		DUBLIN PORT COMPANY LTD.	
Drawing Status		PL01	

Title		MARITIME VILLAGE CONCEPT LIGHTING DESIGN SHEET 1 OF 6	
Project No.	1038937	Scale	1:200
Drawing No.		1036912-CDL-ZZ-00-DR-E-39010	

**CUNDALL**

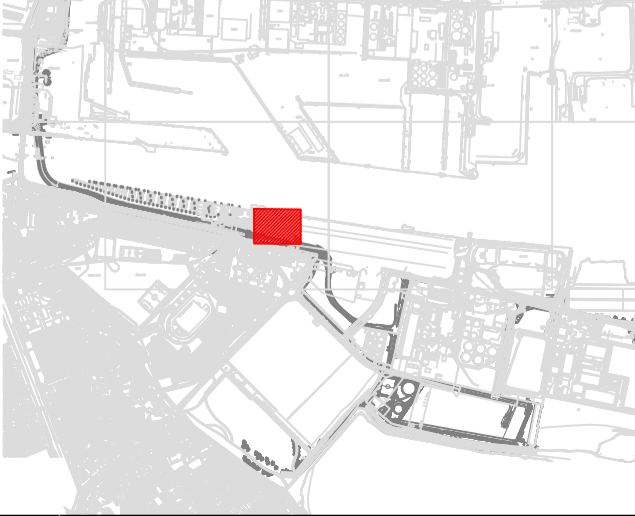
2 Dawson Street,  
 Dublin, Ireland,  
 D02 VK75  
 Tel: +353 (0)1 513 7120  
 Website: www.cundall.com

Issue	Date	Description	GP	DK	WD
PL01	01/07/24	LIGHTING CONCEPT			
			By	Chkd	Verfd



**A1**

**NOTES:**  
 1. THIS DRAWING SHALL BE READ IN CONJUNCTION WITH ALL RELEVANT ARCHITECTURAL, STRUCTURAL AND ENGINEERING SERVICES DRAWINGS, SPECIFICATIONS, SCHEDULES AND PROJECT SPECIFIC DOCUMENTS.  
 2. ALL PLANT AND EQUIPMENT IS TO BE INSTALLED TO MANUFACTURER'S RECOMMENDATIONS, ALLOWING FULL ACCESS FOR COMMISSIONING, MAINTENANCE AND REMOVAL/REPLACEMENT.  
 3. ALL DIMENSIONS IN mm UNLESS OTHERWISE STATED.  
 4. DO NOT SCALE FROM THIS DRAWING.  
 5. FOR SYMBOLS SEE DRAWING XXXX(X)XXXX.



- MARITIME VILLAGE LEGEND:**
- CORSO 3.0
  - SIMES S.P.A. GHOST RECESSED WALL LIGHT
  - SPOT 4.4
  - RENO HESS POLE LIGHT 180 DEGREES
  - RIO UNDER BALCONY STRIP LIGHT
  - ATTINA STREET LIGHT
  - METRO FLOODLIGHT
  - RENO ELEMENTS HESS POLE LIGHT 360 DEGREES
  - CORSO 1.0
  - STRA 2.0 INGROUND UPLIGHT
  - RIO 2.4D 34W RGB
  - RIO INGROUND STRIP LIGHT - 1510mm
  - RIO INGROUND STRIP LIGHT - 1010mm
  - RIO INGROUND STRIP LIGHT - 510mm
  - RIO INGROUND STRIP LIGHT - 260mm
  - KASSIO BOLLARD
  - METRO STREET LIGHT
  - SOLO AREA LIGHT
  - MEGASTAGE LED OSARAM DURIS S5
  - FARO LED WIDE BEAM
  - LUX LEVEL ON SURFACE

Based on:  
 Architects Drg No.  
 Structural Drg No.  
 Survey Drg No.  
 Other Drg No.  
 Other Drg No.

Rev  
 Rev  
 Rev  
 Rev

THIS DRAWING MAY INDICATE ELEMENTS RELATED TO FIRE SYSTEMS. THESE ARE INDICATIVE ONLY AND FINAL NUMBER, POSITIONING AND PERFORMANCE MUST BE ESTABLISHED AS PART OF THE CDP WORKS TO MAINTAIN THE INTENT OF THE DESIGN FIRE STRATEGY.

PL01	01/07/24	LIGHTING CONCEPT	GP	DK	WD
Issue	Date	Description	By	Chkd	Verfd

Project  
**3FM PROJECT**

Client  
**DUBLIN PORT COMPANY LTD.**

Drawing Status  
**PL01**

Title  
**MARITIME VILLAGE  
 CONCEPT LIGHTING DESIGN  
 SHEET 2 OF 6**

Project No.  
**1038937**

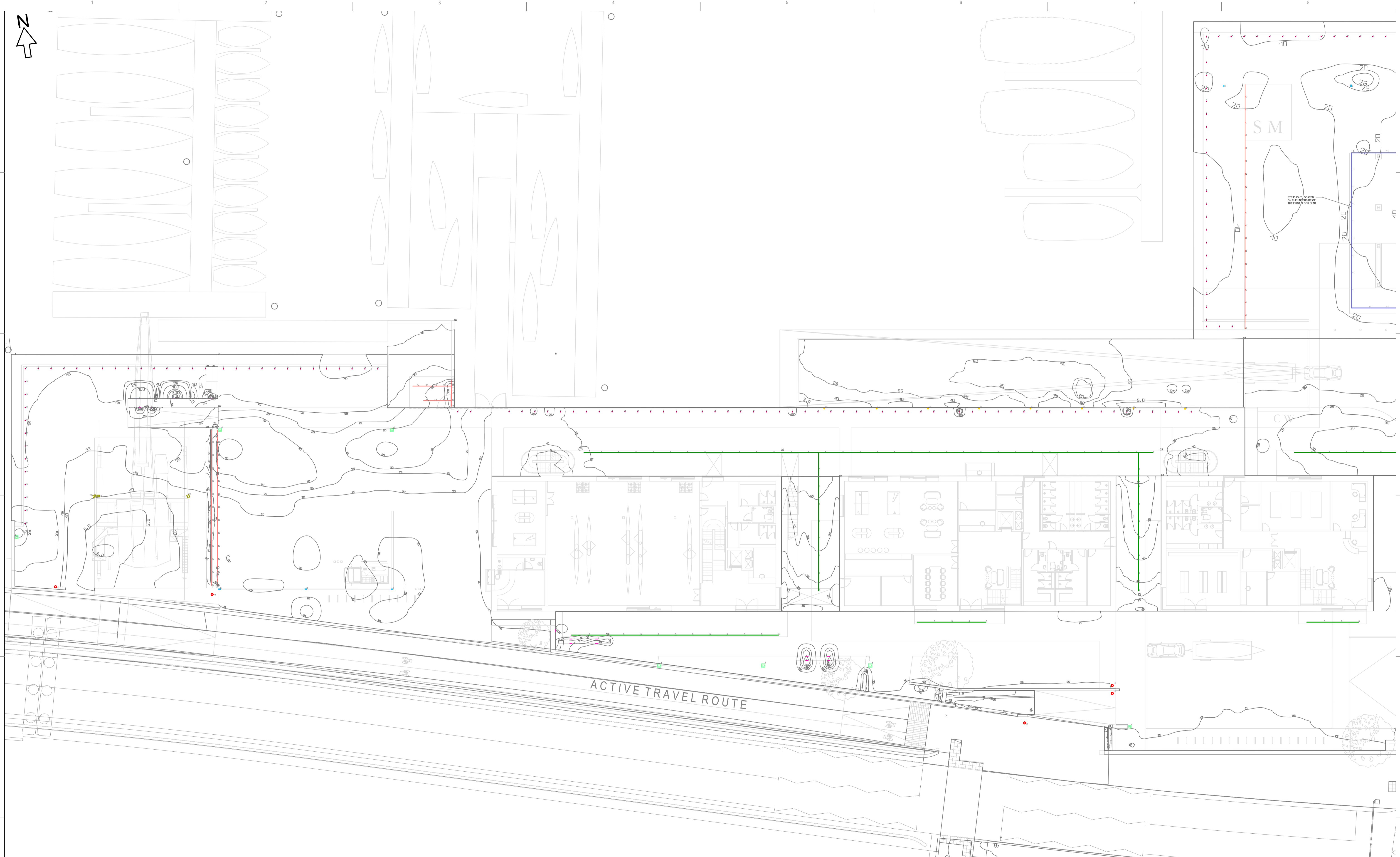
Scale  
**1:200**

Drawing No.  
**1036912-CDL-ZZ-00-DR-E-39011**

**CUNDALL**

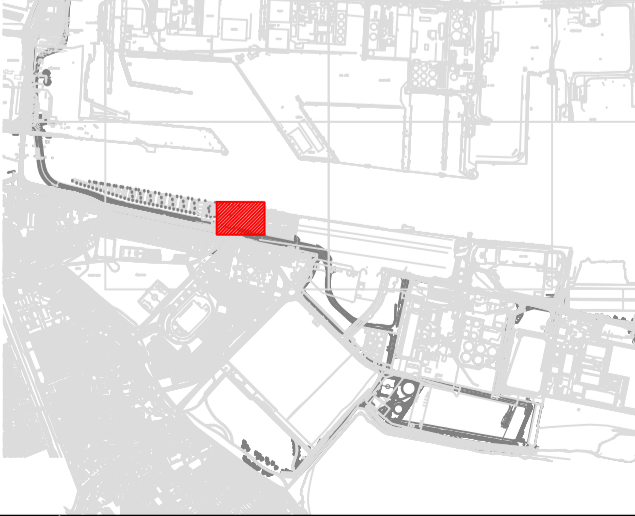
2 Dawson Street,  
 Dublin, Ireland,  
 D02 VK75  
 Tel: +353 (0)1 513 7120  
 Website: www.cundall.com





**A1**

- NOTES:**
1. THIS DRAWING SHALL BE READ IN CONJUNCTION WITH ALL RELEVANT ARCHITECTURAL, STRUCTURAL AND ENGINEERING SERVICES DRAWINGS, SPECIFICATIONS, SCHEDULES AND PROJECT SPECIFIC DOCUMENTS.
  2. ALL PLANT AND EQUIPMENT IS TO BE INSTALLED TO MANUFACTURER'S RECOMMENDATIONS, ALLOWING FULL ACCESS FOR COMMISSIONING, MAINTENANCE AND REMOVAL/REPLACEMENT.
  3. ALL DIMENSIONS IN mm UNLESS OTHERWISE STATED.
  4. DO NOT SCALE FROM THIS DRAWING.
  5. FOR SYMBOLS SEE DRAWING XXXX(X)XXXX.



**MARITIME VILLAGE LEGEND:**

	CORSO 3.0		RIO 2.4D 34W RGB
	SIMES S.P.A. GHOST RECESSED WALL LIGHT		RIO INGROUND STRIP LIGHT - 1510mm
	SPOT 4.4		RIO INGROUND STRIP LIGHT - 1010mm
	RENO HESS POLE LIGHT 180 DEGREES		RIO INGROUND STRIP LIGHT - 510mm
	RIO UNDER BALCONY STRIP LIGHT		RIO INGROUND STRIP LIGHT - 260mm
	ATTINA STREET LIGHT		KASSIO BOLLARD
	METRO FLOODLIGHT		METRO STREET LIGHT
	RENO ELEMENTS HESS POLE LIGHT 360 DEGREES		SOLO AREA LIGHT
	CORSO 1.0		MEGASTAGE LED OSARAM DURIS S5
	STRA 2.0 INGROUND UPLIGHT		FARO LED WIDE BEAM
			LUX LEVEL ON SURFACE

Based on:  
 Architects Drg No.  
 Structural Drg No.  
 Survey Drg No.  
 Other Drg No.  
 Other Drg No.

Rev  
 Rev  
 Rev  
 Rev

THIS DRAWING MAY INDICATE ELEMENTS RELATED TO FIRE SYSTEMS. THESE ARE INDICATIVE ONLY AND FINAL NUMBER, POSITIONING AND PERFORMANCE MUST BE ESTABLISHED AS PART OF THE CDP WORKS TO MAINTAIN THE INTENT OF THE DESIGN FIRE STRATEGY.

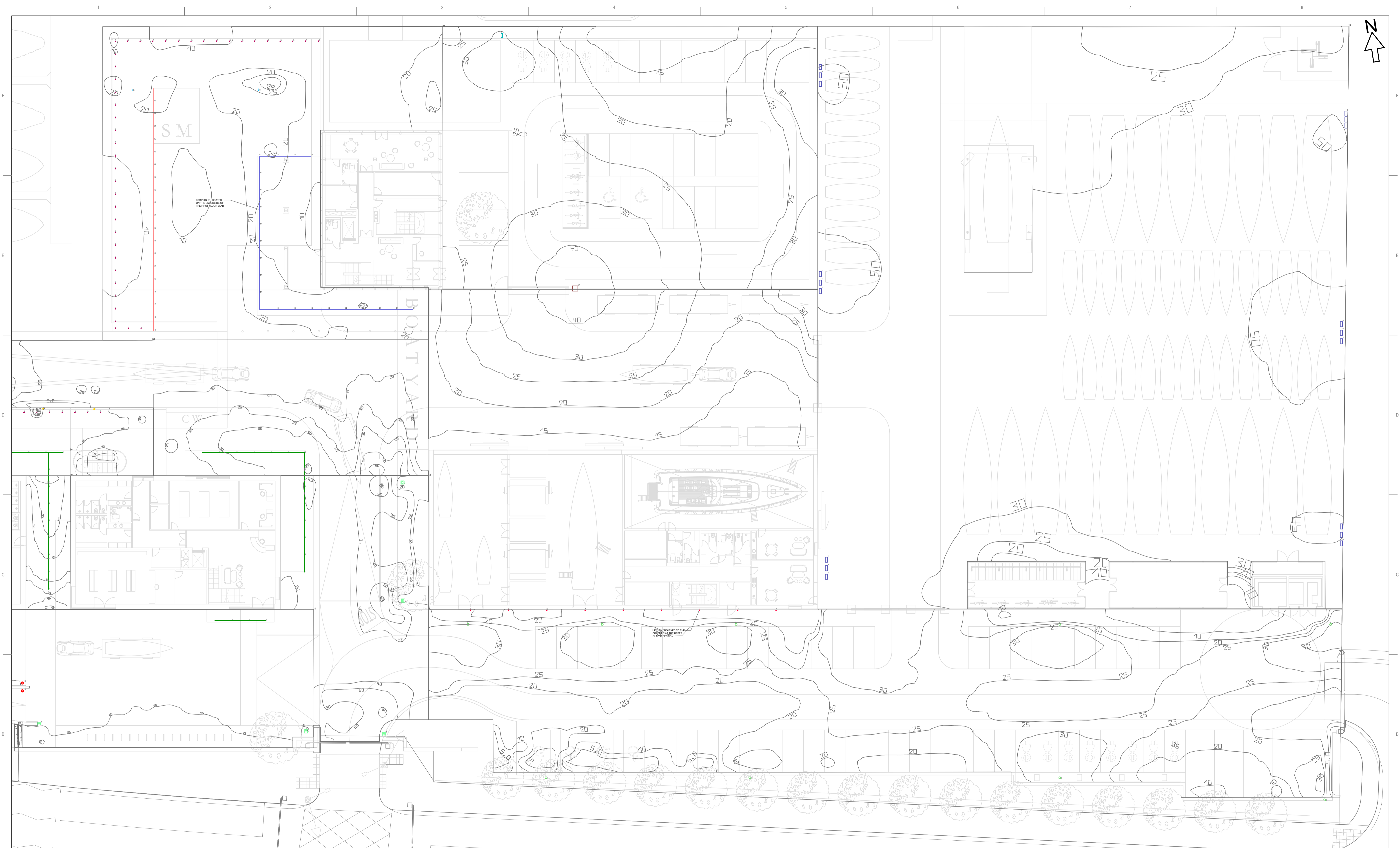
PL01	01/07/24	LIGHTING CONCEPT	GP	DK	WD
Issue	Date	Description	By	Chkd	Verfd

Project	3FM PROJECT
Client	DUBLIN PORT COMPANY LTD.
Drawing Status	PL01

Title	
MARITIME VILLAGE CONCEPT LIGHTING DESIGN CALCULATION SURFACE SHEET 3 OF 6	
Project No.	1038937
Scale	1:200
Drawing No.	1036912-CDL-ZZ-00-DR-E-39012

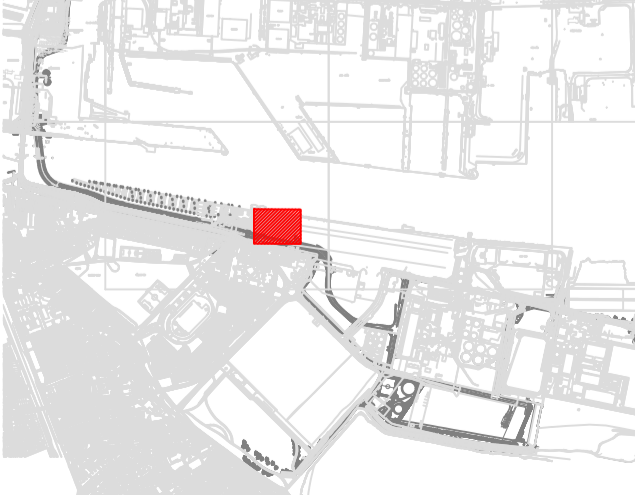
**CUNDALL**

2 Dawson Street,  
 Dublin, Ireland,  
 D02 VK75  
 Tel: +353 (0)1 513 7120  
 Website: www.cundall.com



**A1**

- NOTES:**
1. THIS DRAWING SHALL BE READ IN CONJUNCTION WITH ALL RELEVANT ARCHITECTURAL, STRUCTURAL AND ENGINEERING SERVICES DRAWINGS, SPECIFICATIONS, SCHEDULES AND PROJECT SPECIFIC DOCUMENTS.
  2. ALL PLANT AND EQUIPMENT IS TO BE INSTALLED TO MANUFACTURER'S RECOMMENDATIONS, ALLOWING FULL ACCESS FOR COMMISSIONING, MAINTENANCE AND REMOVAL/REPLACEMENT.
  3. ALL DIMENSIONS IN mm UNLESS OTHERWISE STATED.
  4. DO NOT SCALE FROM THIS DRAWING.
  5. FOR SYMBOLS SEE DRAWING XXXX(X)XXXX.



**MARITIME VILLAGE LEGEND:**

	CORSO 3.0		RIO 2.4D 34W RGB
	SIMES S.P.A. GHOST RECESSED WALL LIGHT		RIO INGROUND STRIP LIGHT - 1510mm
	SPOT 4.4		RIO INGROUND STRIP LIGHT - 1010mm
	RENO HESS POLE LIGHT 180 DEGREES		RIO INGROUND STRIP LIGHT - 510mm
	RIO UNDER BALCONY STRIP LIGHT		RIO INGROUND STRIP LIGHT - 260mm
	ATTINA STREET LIGHT		KASSIO BOLLARD
	METRO FLOODLIGHT		METRO STREET LIGHT
	RENO ELEMENTS HESS POLE LIGHT 360 DEGREES		SOLO AREA LIGHT
	CORSO 1.0		MEGASTAGE LED OSARAM DURIS S5
	STRA 2.0 INGROUND UPLIGHT		FARO LED WIDE BEAM
			LUX LEVEL ON SURFACE

Based on:  
 Architects Drg No.  
 Structural Drg No.  
 Survey Drg No.  
 Other Drg No.  
 Other Drg No.

Rev  
 Rev  
 Rev  
 Rev

THIS DRAWING MAY INDICATE ELEMENTS RELATED TO FIRE SYSTEMS. THESE ARE INDICATIVE ONLY AND FINAL NUMBER, POSITIONING AND PERFORMANCE MUST BE ESTABLISHED AS PART OF THE CDP WORKS TO MAINTAIN THE INTENT OF THE DESIGN FIRE STRATEGY.

PL01	01/07/24	LIGHTING CONCEPT	GP	DK	WD
Issue	Date	Description	By	Chkd	Verfd

Project  
**3FM PROJECT**

Client  
**DUBLIN PORT COMPANY LTD.**

Drawing Status  
**PL01**

Title  
**MARITIME VILLAGE  
 CONCEPT LIGHTING DESIGN  
 CALCULATION SURFACE  
 SHEET 4 OF 6**

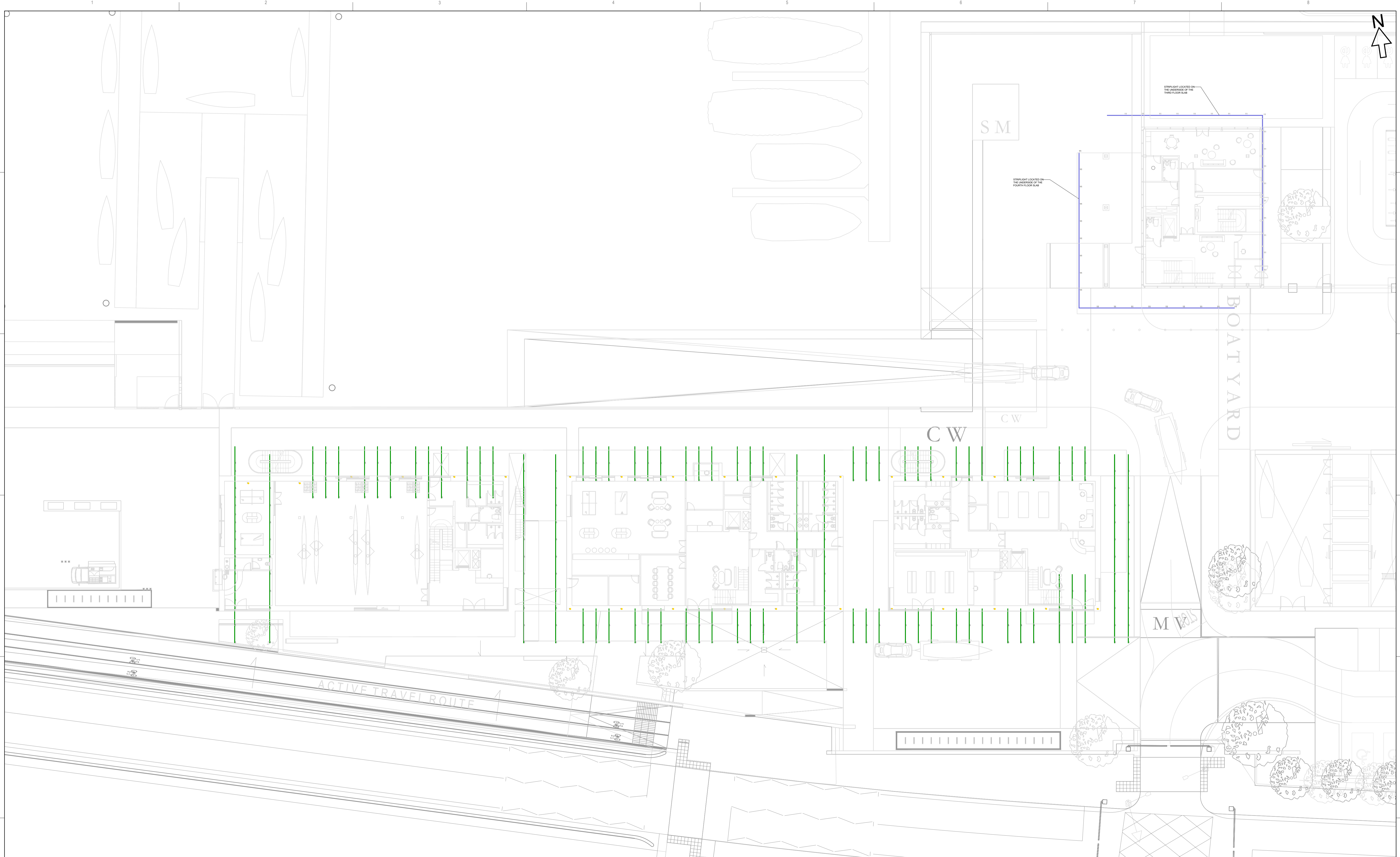
Project No.  
**1038937**

Scale  
**1:200**

Drawing No.  
**1036912-CDL-ZZ-00-DR-E-39013**

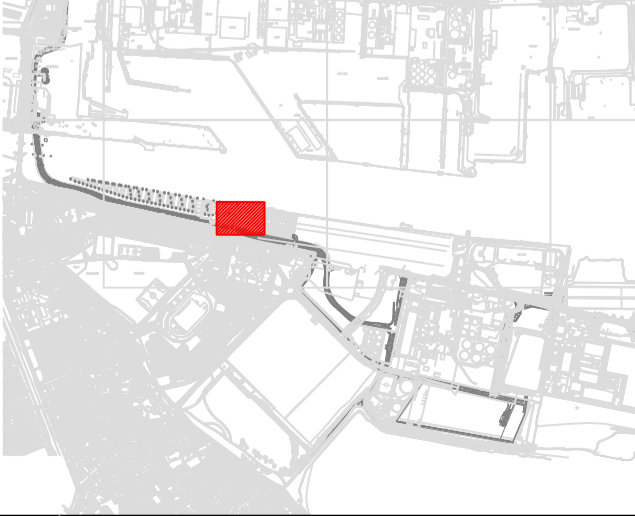
**CUNDALL**

2 Dawson Street,  
 Dublin, Ireland,  
 D02 VK75  
 Tel: +353 (0)1 513 7120  
 Website: www.cundall.com



**A1**

- NOTES:**
- THIS DRAWING SHALL BE READ IN CONJUNCTION WITH ALL RELEVANT ARCHITECTURAL, STRUCTURAL AND ENGINEERING SERVICES DRAWINGS, SPECIFICATIONS, SCHEDULES AND PROJECT SPECIFIC DOCUMENTS.
  - ALL PLANT AND EQUIPMENT IS TO BE INSTALLED TO MANUFACTURER'S RECOMMENDATIONS, ALLOWING FULL ACCESS FOR COMMISSIONING, MAINTENANCE AND REMOVAL/REPLACEMENT.
  - ALL DIMENSIONS IN mm UNLESS OTHERWISE STATED.
  - DO NOT SCALE FROM THIS DRAWING.
  - FOR SYMBOLS SEE DRAWING XXXX(X)XXXX.



**MARITIME VILLAGE LEGEND:**

	CORSO 3.0		RIO 2.4D 34W RGB
	SIMES S.P.A. GHOST RECESSED WALL LIGHT		RIO INGROUND STRIP LIGHT - 1510mm
	SPOT 4.4		RIO INGROUND STRIP LIGHT - 1010mm
	RENO HESS POLE LIGHT 180 DEGREES		RIO INGROUND STRIP LIGHT - 0.510mm
	RIO UNDER BALCONY STRIP LIGHT		RIO INGROUND STRIP LIGHT - 0.260mm
	ATTINA STREET LIGHT		KASSIO BOLLARD
	METRO FLOODLIGHT		METRO STREET LIGHT
	RENO ELEMENTS HESS POLE LIGHT 360 DEGREES		SOLO AREA LIGHT
	CORSO 1.0		MEGASTAGE LED OSARAM DURIS S5
	STRA 2.0 INGROUND UPLIGHT		FARO LED WIDE BEAM
			LUX LEVEL ON SURFACE

Based on:  
 Architects Drg No.  
 Structural Drg No.  
 Survey Drg No.  
 Other Drg No.  
 Other Drg No.

Rev  
 Rev  
 Rev  
 Rev

THIS DRAWING MAY INDICATE ELEMENTS RELATED TO FIRE SYSTEMS. THESE ARE INDICATIVE ONLY AND FINAL NUMBER, POSITIONING AND PERFORMANCE MUST BE ESTABLISHED AS PART OF THE CDP WORKS TO MAINTAIN THE INTENT OF THE DESIGN FIRE STRATEGY.

PL01	01/07/24	LIGHTING CONCEPT	GP	DK	WD
Issue	Date	Description	By	Chkd	Verfd

Project  
**3FM PROJECT**

Client  
**DUBIN PORT COMPANY LTD.**

Drawing Status  
**PL01**

Title  
**MARITIME VILLAGE  
 CONCEPT LIGHTING DESIGN  
 SHEET 5 OF 6**

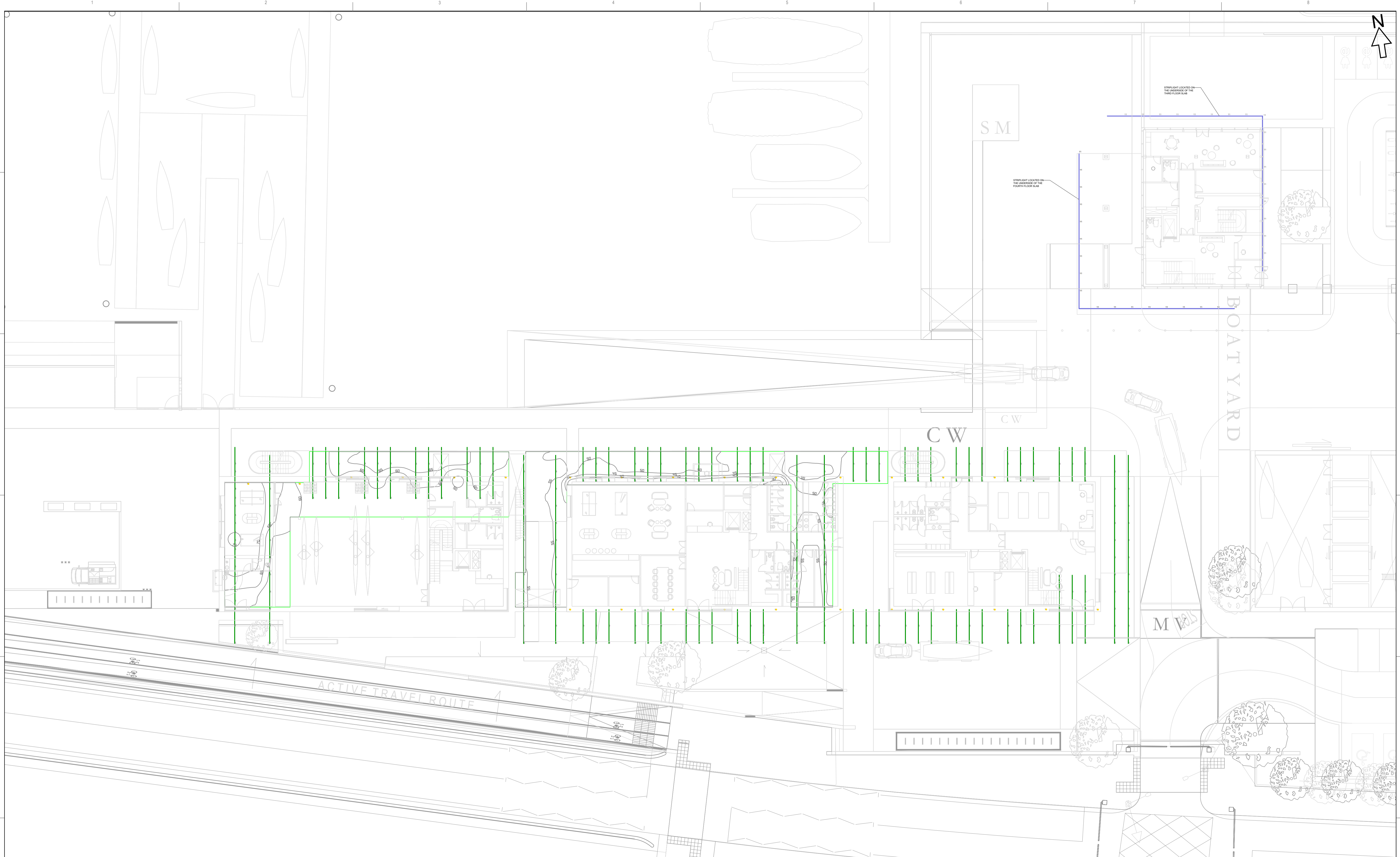
Project No.  
**1038937**

Scale  
**1:200**

Drawing No.  
**1036912-CDL-ZZ-01-DR-E-39010**

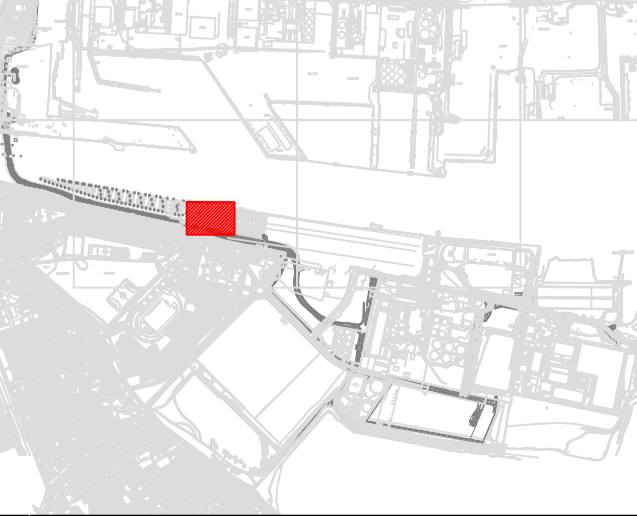
**CUNDALL**

2 Dawson Street,  
 Dublin, Ireland,  
 D02 VK75  
 Tel: +353 (0)1 513 7120  
 Website: www.cundall.com



**A1**

**NOTES:**  
 1. THIS DRAWING SHALL BE READ IN CONJUNCTION WITH ALL RELEVANT ARCHITECTURAL, STRUCTURAL AND ENGINEERING SERVICES DRAWINGS, SPECIFICATIONS, SCHEDULES AND PROJECT SPECIFIC DOCUMENTS.  
 2. ALL PLANT AND EQUIPMENT IS TO BE INSTALLED TO MANUFACTURER'S RECOMMENDATIONS, ALLOWING FULL ACCESS FOR COMMISSIONING, MAINTENANCE AND REMOVAL/REPLACEMENT.  
 3. ALL DIMENSIONS IN mm UNLESS OTHERWISE STATED.  
 4. DO NOT SCALE FROM THIS DRAWING.  
 5. FOR SYMBOLS SEE DRAWING XXXX(X)XXXX.



**MARITIME VILLAGE LEGEND:**

	CORSO 3.0		RIO 2.4D 34W RGB
	SIMES S.P.A. GHOST RECESSED WALL LIGHT		RIO INGROUND STRIP LIGHT - 1510mm
	SPOT 4.4		RIO INGROUND STRIP LIGHT - 1010mm
	RENO HESS POLE LIGHT 180 DEGREES		RIO INGROUND STRIP LIGHT - 510mm
	RIO UNDER BALCONY STRIP LIGHT		RIO INGROUND STRIP LIGHT - 260mm
	ATTINA STREET LIGHT		KASSIO BOLLARD
	METRO FLOODLIGHT		METRO STREET LIGHT
	RENO ELEMENTS HESS POLE LIGHT 360 DEGREES		SOLO AREA LIGHT
	CORSO 1.0		MEGASTAGE LED OSARAM DURIS S5
	STRA 2.0 INGROUND UPLIGHT		FARO LED WIDE BEAM
			LUX LEVEL ON SURFACE

Based on:  
 Architects Drg No.  
 Structural Drg No.  
 Survey Drg No.  
 Other Drg No.  
 Other Drg No.

Rev  
 Rev  
 Rev  
 Rev

THIS DRAWING MAY INDICATE ELEMENTS RELATED TO FIRE SYSTEMS. THESE ARE INDICATIVE ONLY AND FINAL NUMBER, POSITIONING AND PERFORMANCE MUST BE ESTABLISHED AS PART OF THE CDP WORKS TO MAINTAIN THE INTENT OF THE DESIGN FIRE STRATEGY.

PL01	01/07/24	LIGHTING CONCEPT	GP	DK	WD
Issue	Date	Description	By	Chkd	Verfd

Project  
**3FM PROJECT**

Client  
**DUBIN PORT COMPANY LTD.**

Drawing Status  
**PL01**

Title  
**MARITIME VILLAGE  
 CONCEPT LIGHTING DESIGN  
 CALCULATION SURFACE  
 SHEET 6 OF 6**

Project No.  
**1038937**

Scale  
**1:200**

Drawing No.  
**1036912-CDL-ZZ-01-DR-E-39011**

**CUNDALL**

2 Dawson Street,  
 Dublin, Ireland,  
 D02 VK75  
 Tel: +353 (0)1 513 7120  
 Website: www.cundall.com

