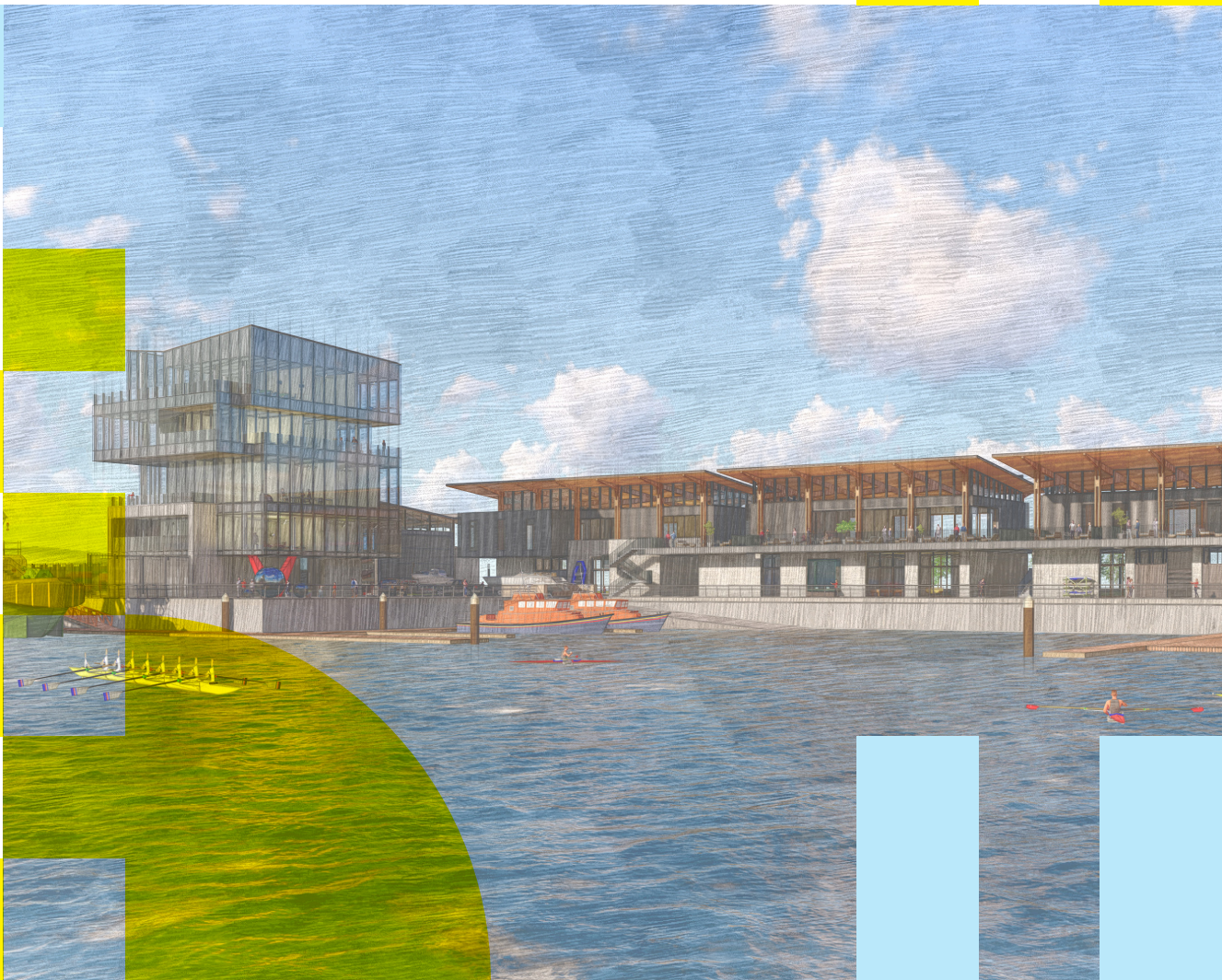


Maritime Village: Schedule of Areas



Project: 3FM Project
Title: Maritime Village - Schedule of Areas Cover Sheet
Date: 01/07/2024
Revision: 1st



The area schedules contained herein pertain to the Maritime Village component of the 3FM Project. They are to be read in conjunction with the Darmody Architecture Drawing Pack as scheduled in the Maritime Village Drawing Issue register, as well as the Architectural Design Report: Maritime Village, prepared by Darmody Architecture. Any schedules contained within the Architectural Design Report are extracted from this Schedule of Areas.

Contents

Page 02	MARITIME VILLAGE - SUMMARY SCHEDULE OF AREAS
Page 03	POOLBEG YACHT & BOAT CLUB - EXISTING FACILITIES TO BE DEMOLISHED
Page 04	STELLA MARIS ROWING CLUB - EXISTING FACILITIES TO BE DEMOLISHED
Page 05	SCHEDULE OF TEMPORARY STRUCTURES TO BE CLEARED FROM SITE
Page 06-07	HARBOUR OPERATIONS - PROPOSED SCHEDULE OF AREAS
Page 08	STELLA MARIS ROWING CLUB - PROPOSED SCHEDULE OF AREAS
Page 09	POOLBEG YACHT & BOAT CLUB - PROPOSED SCHEDULE OF AREAS
Page 10	MARITIME TRAINING CENTRE - PROPOSED SCHEDULE OF AREAS
Page 11-12	BOAT MAINTENANCE BUILDING - PROPOSED SCHEDULE OF AREAS
Page 13	MARITIME VILLAGE - CAR PARKING PROVISIONS
Page 14	MARITIME VILLAGE - BICYCLE PARKING PROVISIONS

Project: 3FM Project
Title: Maritime Village - Summary Schedule of Areas
Date: 01/07/2024
Revision: 1st



Existing Boat Club Site	5001.4 m²	0.50014 ha	
Existing Total Footprint GF	807 m ²	16 %	site coverave
Existing Total Gross Floor Area	820.2 m ²	16 % equals	0.19 plot ratio
Car Parking	28 no.		0.03 spaces per m ² development
Bicycle Parking	6 no.		0.01 spaces per m ² development

	Existing Area GFA m ²	Area to be demolished m ²	Area to be retained m ²
Stella Maris Rowing Club (Existing Clubhouse)	279.9 m ²	279.9 m ²	0 m ²
Stella Maris Rowing Club (Existing Boat Shed)	62.1 m ²	62.1 m ²	0 m ²
Poolbeg Yacht & Boat Club	478.2 m ²	478.2 m ²	0 m ²
Totals*	820.2 m²	820.2 m²	0 m²

* total excluding 218.5 m2 of temporary storage containers on site to be removed additionally (refer to Page 05 of this schedule)

Proposed Maritime Village Site Area	18006 m²	1.8006 ha	
Total Footprint GF	2775 m ²	15 %	site coverave
Total Gross Floor Area	5290 m ²	29 % equals	0.29 plot ratio
Car Parking	87 no.		0.02 spaces per m ² development
Bicycle Parking	148 no.		0.03 spaces per m ² development

Proposed Structures

Floor Level	Harbour Operations	Stella Maris Rowing Club	Poolbeg Yacht Club	Maritime Training Centre	Boat Maintenance Facility	Shared Site Facilities	Total GFA per Level	
Ground Floor	235. m ²	436. m ²	455. m ²	340.5 m ²	794. m ²	187. m ²	2,447.5 m²	GFA Ground Floor
First Floor	364. m ²	335. m ²	335. m ²	462.5 m ²	275. m ²		1,771.5 m²	GFA First Floor
Second Floor	342. m ²						342. m²	GFA Second Floor
Third Floor	344. m ²						344. m²	GFA Third Floor
Fourth Floor	325. m ²						325. m²	GFA Fourth Floor
Fifth Floor	60. m ²						60. m²	GFA Fifth Floor
	1,670. m²	771. m²	790. m²	803. m²	1,069. m²	187. m²	5,290. m²	Total GFA
Total GFA per building	GFA Harbour Operations	GFA Stella Maris Rowing Club	GFA Poolbeg Yacht Club	GFA Maritime Training Centre	GFA Boat Maintenance Facility	GFA Shared Site Facilities		

Project No: 3FM Project
 Maritime Village
 Title: Poolbeg Yacht & Boat Club - Existing Schedule of Areas
 Date: 01/07/2024
 Revision: 1st



POOLBEG YACHT & BOAT CLUB - EXISTING FACILITIES TO BE DEMOLISHED refer to Drawing No. EX100				
Room Number	Room Name	Areas m ²		Totals m ²
		Net Internal Areas m ²	Circulation m ²	

Ground Floor

0.01	Entrance foyer incl. stairs		22.6 m ²	
0.02	Store 01	4.2 m ²		
0.03	Office	8.3 m ²		
0.04	Circulation corridors		19.3 m ²	
0.05	Bar / social area	116.7 m ²		
0.06	Store 02	9.9 m ²		
0.07	Kitchen / Prep	16.4 m ²		
0.08	Unnamed room	1.6 m ²		
0.09	WC / shower	4.8 m ²		
0.10	Male WC	12.3 m ²		
0.11	Male Shower	9.6 m ²		
0.12	Female WC	13.9 m ²		
0.13	Female Shower	9.7 m ²		
Total Ground Floor Net Areas		207.4 m²	41.9 m²	249.3 m²
Total Ground Floor Gross Floor Area (GFA)		77.19% net to gross		268.7 m²

First Floor

1.01	Stairs		20.8 m ²	
1.02	Youth Section	110.6 m ²		
1.03	Store 03	39.4 m ²		
1.04	Store 04	16.9 m ²		
Total First Floor Net Areas		166.9 m²	20.8 m²	187.7 m²
Total First Floor Gross Floor Area (GFA)		79.67% net to gross		209.5 m²

TOTAL POOLBEG NET AREAS		374.3 m²	62.7 m²	437. m²
TOTAL POOLBEG GROSS FLOOR AREA (GFA)		78.27% net to gross		478.2 m²

Project: 3FM Project
Maritime Village
Title: Stella Maris Rowing Club - Existing Schedule of Areas
Date: 01/07/2024
Revision: 1st



STELLA MARIS ROWING CLUB - EXISTING FACILITIES TO BE DEMOLISHED				
refer to Drawing No. EX101				
Room Number	Room Name	Areas m ²		Totals m ²
		Net Internal Areas m ²	Circulation m ²	

Ground Floor				
0.01	Stairs		13.2 m ²	
0.02	Boat Store	60.5 m ²		
0.03	Room	2.5 m ²		
0.04	WC	6.2 m ²		
0.05	Circulation		5.8 m ²	
0.06	WC	2. m ²		
0.07	Male shower room	11.8 m ²		
0.08	WC	1.8 m ²		
0.09	Female shower room	17.2 m ²		
0.10	Kitchen	13.3 m ²		
Total Ground Floor Net Areas		115.3 m ²	19. m ²	134.3 m ²
Total Ground Floor Gross Floor Area (GFA)		82.30% net to gross		140.1 m ²

First Floor				
1.01	Stairs		7.6 m ²	
1.02	Gym	125.1 m ²		
Total First Floor Net Areas		125.1 m ²	7.6 m ²	132.7 m ²
Total First Floor Gross Floor Area (GFA)		89.48% net to gross		139.8 m ²

TOTAL STELLA MARIS CLUBHOUSE NET AREAS		240.4 m²	26.6 m²	267. m²
TOTAL STELLA MARIS CLUBHOUSE GROSS FLOOR AREA (GFA)		85.89% net to gross		279.9 m²

Project: 3FM Project
Title: Maritime Village
Date: Temporary Structures - Existing Schedule of Areas
Revision: 01/07/2024
 1st



SCHEDULE OF TEMPORARY STRUCTURES TO BE CLEARED FROM SITE refer to Drawing No. EX102		
Number	Name	Areas m ²
01	Temporary 20 foot Storage Container (Number 01)	13.5 m ²
02	Temporary 20 foot Storage Container (Number 02)	13.5 m ²
03	Temporary 20 foot Storage Container (Number 03)	13.5 m ²
04	Temporary 20 foot Storage Container (Number 04)	13.5 m ²
05	Temporary 40 foot Storage Container (Number 05, stacked with no. 6 below)	27.5 m ²
06	Temporary 40 foot Storage Container (Number 06, stacked with no. 5 above)	27.5 m ²
07	Temporary 20 foot Storage Container (Number 07)	13.5 m ²
08	Temporary 40 foot Storage Container (Number 08)	27.5 m ²
09	Temporary 40 foot Storage Container (Number 09)	27.5 m ²
10	Temporary 20 foot Storage Container (Number 10)	13.5 m ²
11	Temporary 40 foot Storage Container (Number 11)	27.5 m ²
TOTAL GROSS FLOOR AREA OF TEMPORARY STRUCTURES TO BE CLEARED FROM SITE (GFA)		218.5 m²

Project: 3FM Project
 Maritime Village
 Title: Harbour Operations - Proposed Schedule of Areas
 Date: 01/07/2024
 Revision: 1st



HARBOUR OPERATIONS - PROPOSED SCHEDULE OF AREAS refer to Drawing No.s PA100 & PA101				
Room Number	Room Name	Areas m ²		Totals m ²
		Net Internal Areas m ²	Circulation m ²	

Ground Floor				
0.01	Wind lobby		7. m ²	
0.02	Reception / Security	8. m ²		
0.03	Entrance Lobby incl. Stair 01		56. m ²	
0.04	Accessible WC	5. m ²		
0.05	Corridor		13.4 m ²	
0.06	Stair 02		29.6 m ²	
0.07	Drying room	10. m ²		
0.08	Equipment store	19. m ²		
0.09	Accessible WC	5. m ²		
0.10	First aid	5. m ²		
0.11	Duty room	51. m ²		
Total Ground Floor Net Areas		103. m ²	106. m ²	209. m ²
Total Ground Floor Gross Floor Area (GFA)		43.83% net to gross		235. m ²

First Floor				
1.01	Stair 01		15. m ²	
1.02	Corridor		38. m ²	
1.03	Accessible WC	5. m ²		
1.04	Male changing & WC's	78. m ²		
1.05	Gym	53. m ²		
1.06	Canteen	76. m ²		
1.07	Corridor		5. m ²	
1.08	Stair 02		15. m ²	
1.09	Female changing & WC's	33. m ²		
1.10	Housekeeping / Stores	12. m ²		
Total First Floor Net Areas		257. m ²	73. m ²	330. m ²
Total First Floor Gross Floor Area (GFA)		70.60% net to gross		364. m ²

Second Floor				
2.01	Stair 01		15. m ²	
2.02	Corridor		29. m ²	
2.03	Accessible WC	5. m ²		
2.04	Linen store	4. m ²		
2.05	Break-out space	34. m ²		
2.06	Restroom 05	12. m ²		
2.07	Restroom 06	12. m ²		
2.08	Server room	5. m ²		
2.09	Emergency management room	46. m ²		
2.10	Corridor		22. m ²	
2.11	Deputy harbour master's office	16. m ²		
2.12	Small meeting room	16. m ²		
2.13	Harbour master's office	24. m ²		
2.14	Stair 02		15. m ²	
2.15	Restroom 01	12. m ²		
2.16	Restroom 02	12. m ²		
2.17	Restroom 03	12. m ²		
2.18	Restroom 04	12. m ²		
Total Second Floor Net Areas		222. m ²	81. m ²	303. m ²

HARBOUR OPERATIONS - PROPOSED SCHEDULE OF AREAS refer to Drawing No.s PA100 & PA101				
Room Number	Room Name	Areas m ²		Totals m ²
		Net Internal Areas m ²	Circulation m ²	

Total Second Floor Gross Floor Area (GFA)	64.91% net to gross	342. m ²
---	---------------------	---------------------

Third Floor			
3.01	Stair 01		15. m ²
3.02	Corridor		21. m ²
3.03	Accessible WC	5. m ²	
3.04	Break-out space	24. m ²	
3.05	Small meeting room	16. m ²	
3.06	Marine office	55. m ²	
3.07	Vessel traffic services (VTS) & shipping desk	75. m ²	
3.08	Corridor		11. m ²
3.09	Tea-Station	11. m ²	
3.10	Comms room	12. m ²	
3.11	Store	7. m ²	
3.12	Stair 02		15. m ²
3.13	Open plan office	42. m ²	
Total Third Floor Net Areas		247. m ²	62. m ²
Total Third Floor Gross Floor Area (GFA)		71.80% net to gross	344. m ²

Fourth Floor			
4.01	Stair 01		15. m ²
4.02	Corridor		33. m ²
4.03	Accessible WC	5. m ²	
4.04	Conference room / pre- event space	42. m ²	
4.05	Bar / catering	27. m ²	
4.06	Service B.O.H.	7. m ²	
4.07	Large event space	97. m ²	
4.08	Stair 02		15. m ²
4.09	Female WC's	18. m ²	
4.10	Housekeeping	4. m ²	
4.11	Stores	12. m ²	
4.12	Male WC's	20. m ²	
Total Fourth Floor Net Areas		232. m ²	63. m ²
Total Fourth Floor Gross Floor Area (GFA)		71.38% net to gross	325. m ²

Fifth Floor			
5.01	Stair 02		14.7 m ²
5.02	Plant Room	25.8 m ²	
Total Fifth Floor Net Areas		25.8 m ²	14.7 m ²
Total Fifth Floor Gross Floor Area (GFA)		43.00% net to gross	60. m ²

TOTAL HARBOUR OPERATIONS NET AREAS	1,086.8 m ²	399.7 m ²	1,486.5 m ²
TOTAL HARBOUR OPERATIONS GROSS FLOOR AREA (GFA)	65.08% net to gross		1,670. m ²

Project: 3FM Project
 Maritime Village
 Title: Stella Maris Rowing Club - Proposed Schedule of Areas
 Date: 01/07/2024
 Revision: 1st



STELLA MARIS ROWING CLUB - PROPOSED SCHEDULE OF AREAS
 refer to Drawing No.s PA110 & PA111

Room Number	Room Name	Areas m ²		Totals m ²
		Net Internal Areas m ²	Circulation m ²	

Ground Floor				
0.01	Entrance foyer		30. m ²	
0.02	Stairs		13. m ²	
0.03	Reception	9. m ²		
0.04	Rowing hub / boat storage	256.5 m ²		
0.05	Junior Area	47.5 m ²		
0.06	Plant	7. m ²		
0.07	Wet lobby		17.5 m ²	
0.08	Boys changing & WC's	12. m ²		
0.09	Accessible WC	4.5 m ²		
0.10	Girls changing & WC's	12. m ²		
0.11	Housekeeping	3.5 m ²		
Total Ground Floor Net Areas		352. m²	60.5 m²	412.5 m²
Total Ground Floor Gross Floor Area (GFA)		80.73% net to gross		436. m²

First Floor				
1.01	Stairs		16. m ²	
1.02	Lobby		17. m ²	
1.03	Corridor		8.5 m ²	
1.04	Female changing & WC's	22. m ²		
1.05	Store	4. m ²		
1.06	Accessible WC	4.5 m ²		
1.07	Male changing & WC's	22. m ²		
1.08	Corridor		15. m ²	
1.09	Meeting room	32. m ²		
1.10	Equipment Store	7.5 m ²		
1.11	Bar / service back-of-house	14. m ²		
1.12	Club social area	96. m ²		
1.13	Members gym	55.5 m ²		
Total First Floor Net Areas		257.5 m²	56.5 m²	314. m²
Total First Floor Gross Floor Area (GFA)		76.87% net to gross		335. m²

TOTAL STELLA MARIS NET AREAS	609.5 m²	117. m²	726.5 m²
TOTAL STELLA MARIS GROSS FLOOR AREA (GFA)	79.05% net to gross		771. m²

Project: 3FM Project
 Maritime Village
 Title: Poolbeg Yacht & Boat Club - Proposed Schedule of Areas
 Date: 01/07/2024
 Revision: 1st



POOLBEG YACHT & BOAT CLUB - PROPOSED SCHEDULE OF AREAS
 refer to Drawing No.s PA110 & PA111

Room Number	Room Name	Areas m ²		Totals m ²
		Net Internal Areas m ²	Circulation m ²	

Ground Floor

0.01	Entrance foyer incl. stairs		63. m ²	
0.02	Reception	10. m ²		
0.03	Club management office	20. m ²		
0.04	Meeting room	30. m ²		
0.05	Youth club / café	131. m ²		
0.06	Wet lobby		31. m ²	
0.07	Plant	5. m ²		
0.08	Drying room	5. m ²		
0.09	Male changing & WC's	23. m ²		
0.10	Female changing & WC's	23. m ²		
0.11	Equipment Store	17.5 m ²		
0.12	Girls changing & WC's	20. m ²		
0.13	Accessible WC	4.5 m ²		
0.14	Boys changing & WC's	20. m ²		
Total Ground Floor Net Areas		309. m²	94. m²	403. m²
Total Ground Floor Gross Floor Area (GFA)		67.91% net to gross		455. m²

First Floor

1.01	Stairs		16. m ²	
1.02	Lobby		10.5 m ²	
1.03	Male WC's	18. m ²		
1.04	Accessible WC	4.5 m ²		
1.05	Female WC's	18. m ²		
1.06	Club social area & bar	227. m ²		
1.07	Service back-of-house	16.5 m ²		
1.08	Equipment Store	8. m ²		
Total First Floor Net Areas		292. m²	26.5 m²	318.5 m²
Total First Floor Gross Floor Area (GFA)		87.16% net to gross		335. m²

TOTAL POOLBEG NET AREAS		601. m²	120.5 m²	721.5 m²
TOTAL POOLBEG GROSS FLOOR AREA (GFA)		76.08% net to gross		790. m²

Project: 3FM Project
Title: Maritime Village
Date: Maritime Training Centre - Proposed Schedule of Areas
Revision: 01/07/2024
 1st



MARITIME TRAINING CENTRE - PROPOSED SCHEDULE OF AREAS				
refer to Drawing No.s PA110 & PA111				
Room Number	Room Name	Areas m ²		Totals m ²
		Net Internal Areas m ²	Circulation m ²	

Ground Floor				
0.01	Entrance foyer incl. stairs		68. m ²	
0.02	Office	24. m ²		
0.03	Wet lobby		24.5 m ²	
0.04	Plant	7.5 m ²		
0.05	Female changing & WC's	23. m ²		
0.06	Accessible WC	4.5 m ²		
0.07	Male changing & WC's	23. m ²		
0.08	Drying room	5.5 m ²		
0.09	Equipment Store	6. m ²		
0.10	Workshop	46. m ²		
0.11	Retail Store - Marine Chandlery	67. m ²		
0.12	Retail B.O.H.	14. m ²		
Total Ground Floor Net Areas		220.5 m²	92.5 m²	313. m²
Total Ground Floor Gross Floor Area (GFA)		64.76% net to gross		340.5 m²

First Floor				
1.01	Stairs		16. m ²	
1.02	Lobby		10. m ²	
1.03	Break-out space / social area	65. m ²		
1.04	Servery	12.5 m ²		
1.05	Equipment Store	7. m ²		
1.06	Kitchen	28. m ²		
1.07	Kitchen stores	10. m ²		
1.08	Classroom 01 / multi- purpose space	80. m ²		
1.09	Classroom 02 / multi- purpose space	65. m ²		
1.1	Communications Training	19. m ²		
1.11	Simulation room 01	7.5 m ²		
1.12	Simulation room 02	7.5 m ²		
1.13	Corridor		22. m ²	
1.14	Library / reading area	8. m ²		
1.15	Accessible WC	4.5 m ²		
1.16	Male WC	3. m ²		
1.17	Housekeeping	2. m ²		
1.18	Female WC	3. m ²		
1.19	Office	13.5 m ²		
1.2	Office	12. m ²		
1.21	Comms room	4. m ²		
1.22	Staff room	15.5 m ²		
1.23	Meeting room	21.5 m ²		
Total First Floor Net Areas		388.5 m²	48. m²	436.5 m²
Total First Floor Gross Floor Area (GFA)		84.00% net to gross		462.5 m²

TOTAL MARITIME TRAINING NET AREAS	609. m²	140.5 m²	749.5 m²
TOTAL MARITIME TRAINING GROSS FLOOR AREA (GFA)	75.84% net to gross		803. m²

Project: 3FM Project
Title: Maritime Village
Date: Boat Maintenance Building - Proposed Schedule of Areas
Revision: 01/07/2024
 1st



BOAT MAINTENANCE BUILDING - PROPOSED SCHEDULE OF AREAS				
refer to Drawing No.s PA120 & PA121				
Room Number	Room Name	Areas m ²		Totals m ²
		Net Internal Areas m ²	Circulation m ²	

Ground Floor

0.01	Boat Bay 01 - Commercial	155. m ²		
0.02	Shared Workshop Commercial / Clubs	18. m ²		
0.03	Secure Store Commercial / Clubs	12. m ²		
0.04	Accessible WC	4.5 m ²		
0.05	Boat Bay 02 - Clubs	155. m ²		
0.06	Clubs Secure Store	12. m ²		
0.07	LPMS Workshop	18. m ²		
0.08	Accessible WC	4.5 m ²		
0.09	General Plant	12. m ²		
0.10	LPMS Secure Store	12. m ²		
0.11	Boat Bay 03 - Harbour Operations (HO)	195. m ²		
0.12	HO Secure Store	12. m ²		
0.13	HO Lobby	5. m ²		
0.14	HO Break room	26. m ²		
0.15	HO Accessible WC	4.5 m ²		
0.16	HO Changing room	5. m ²		
0.17	Ringsend Registered Fishermen & Private Boat Owner's Association (RRFPBOA) - Break room	44. m ²		
0.18	RRFPBOA changing room	22. m ²		
0.19	RRFPBOA Accessible WC	4.5 m ²		
0.20	RRFPBOA Secure Store	12. m ²		
0.21	Lobby		4.5 m ²	
0.22	Stairs to first floor		14.5 m ²	
Total Ground Floor Net Areas		733. m²	19. m²	752. m²
Total Ground Floor Gross Floor Area (GFA)		92.32% net to gross		794. m²

First Floor

1.01	Stairs		15. m ²	
1.02	Lobby		6. m ²	
1.03	Corridor		32. m ²	
	Liffey Port Marine Services (LPMS) break room	32. m ²		
1.04	LPMS changing area	17. m ²		
1.05	LPMS Accessible WC	4.5 m ²		
1.06	LPMS Office	25. m ²		
1.07	LPMS Meeting / training room	37. m ²		
1.08	Bay 01 Storage mezzanine	40. m ²		
1.09	Bay 02 Storage mezzanine	40. m ²		
Total First Floor Net Areas		195.5 m²	53. m²	248.5 m²

BOAT MAINTENANCE BUILDING - PROPOSED SCHEDULE OF AREAS refer to Drawing No.s PA120 & PA121				
Room Number	Room Name	Areas m ²		Totals m ²
		Net Internal Areas m ²	Circulation m ²	
Total First Floor Gross Floor Area (GFA)		71.09% net to gross		275. m ²
TOTAL BOAT MAINTENANCE NET AREAS		928.5 m²	72. m²	1,000.5 m²
TOTAL BOAT MAINTENANCE GROSS FLOOR AREA (GFA)		86.86% net to gross		1,069. m²

Project: 3FM Project
Title: Maritime Village Car Parking Provisions
Date: 01/07/2024
Revision: 1st



Car Parking Maximum Provisions				
Building / Use	Use Class	Area SqM GFA	DCC Development 2022-2028 Plan Max. Requirements (Zone 3)	
			Ratio	Quantity Reqd.
Harbour Operations	Office	1670	1 space per 100m ²	17
Stella Maris Rowing Club (excl. Marina Office)	Clubhouse / Gymnasium	771	Dependent on nature and location of use ¹	11
Marina Management Office	Office	31	1 space per 100m ²	1
Poolbeg Yacht & Boat Club	Clubhouse / Gymnasium	790	Dependent on nature and location of use ¹	11
Maritime Training Centre (excl. Marine Chandlery)	Community Centre	736	1 space per 75m ²	10
Marine Chandlery	Retail	67	1 space per 75m ²	1
Boat Maintenance Facility - warehouse areas	Manufacturing / Warehousing	847.5	1 space per 200m ² GFA	5
Boat Maintenance Facility - clubhouse areas	Clubhouse / Gymnasium	221.5	Dependent on nature and location of use ¹	3
Max Total Required				59

Notes:

1. Assumed 1 space per 75m² as per community centre.

1. Assumed 1 space per 75m² as per community centre.

1. Assumed 1 space per 75m² as per community centre.

Of which, 5% to be accessible spaces 3
 Of which, 50% to be E-Car charging spaces 30

Proposed Car Parking				
Proposed Element	Standard Spaces	Accessible Spaces	Trailer / Mini-bus spaces	Total Spaces
Main Carpark	50	4	5	59
Harbour Operations Carpark	26	2	0	28
Total Provision	76	6	5	87
	87.4%	6.9%	5.7%	100.0%

*total of which
EV Charging

30 50%

14 50%

44 51%

Notes:

DCC Dev Plan 2022-2028 Appendix 5, Section 4.2 - At least 5% of the total number of spaces shall be designated accessible car-parking spaces, with a minimum provision of at least one such space, which ever one is the greatest.

DCC Dev Plan 2022-2028 Appendix 5, Section 5.0 - All new developments must be futureproofed to include EV charging points and infrastructure. In all new developments, a minimum of 50% of all car parking spaces shall be equipped with fully functional EV Charging Point(s). The remaining spaces shall be designed to facilitate the relevant infrastructure to accommodate future EV charging. Space for EV charging infrastructure shall be clearly detailed in planning applications.

Project 3FM Project
Title: Maritime Village Bicycle Parking Provisions
Date: 01/07/2024
Revision: 1st



Bicycle Parking Minimum Provisions

Building / Use	Use Class	Area SqM GFA	No. People	DCC Development 2022-2028 Plan Min. Requirements			
				Long Stay		Short Stay	
				Ratio	Quantity Reqd.	Ratio	Quantity Reqd.
Harbour Operations	Office	1670	68	1 space per 75m ² GFA	23	To be determined by planning authority on case by case basis	2
Stella Maris Rowing Club (excl. Marina Office)	Clubhouse / Gymnasium	771	10	1 space per 5 staff	2	1 space per 50m ² GFA	16
Marina Management Office	Office	31	1	1 space per 75m ² GFA	1	To be determined by planning authority on case by case basis	1
Poolbeg Yacht & Boat Club	Clubhouse / Gymnasium	790	10	1 space per 5 staff	2	1 space per 50m ² GFA	16
Maritime Training Centre (excl. Marine Chandlery)	Community Centre	736	10	1 space per 5 staff	2	1 space per 100m ² GFA	8
Marine Chandlery	Retail	67	2	1 space per 5 staff	1	1 space per 100m ² GFA	1
Boat Maintenance Facility - warehouse areas	Manufacturing / Warehousing	847.5	N/A	1 space per 200m ² GFA	5	none	0
Boat Maintenance Facility - clubhouse areas	Clubhouse / Gymnasium	221.5	5	1 space per 5 staff	1	1 space per 50m ² GFA	5
Total Required					37		49
							86

Proposed Bicycle Parking

Proposed Element	Users	Long Stay Spaces	Short Stay Spaces
Secure Bike Store 01	All Site users (excl Harbour Operations)	76	
Secure Bike Store 02	Harbour Operations	16	
Short Stay Sheffield Stands	All Site Users		56
Total Provision		92	56
			148