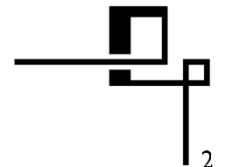


Port Park: Landscape Design Report



CONTENTS

CONTENTS	Pg.
1.0 DEVELOPMENT DESCRIPTION	
1.1 Development Description	03
2.0 DESIGN STATEMENT: PROPOSALS	
2.1 Design Rationale Overview	04
2.2 Design Rationale, North End of Site	05
2.3 Design Rationale, South End of Site	05
3.0 3D VIEWS	
3.1 3D View 01	07
3.2 3D View 02	08
3.3 3D View 03	09
3.4 3D View 04	10
3.5 3D View 05	11
4.0 REFERENCE IMAGES / MATERIALITY	
4.1 Reference / Materiality	12
5.0 PLANTING	
5.1 Trees, Proposed	13
5.2 Plot O Screening, Boundary Trees	14
5.3 Woodland Groundcover	15
<i>This Report to be read in conjunction with the following Landscape Drawings:</i>	
1. 33-P-001 (Overall Landscape Plan)	
2. 33-P-002 (Proposed Landscape Plan, sheet 1)	
3. 33-P-003 (Proposed Planting Plan, Park)	
4. 33-P-004 (Proposed Planting Plan, Area O, Tree Screening, Sheet 1)	
5. 33-P-005 (Proposed Planting Plan, Area O, Tree Screening, Sheet 2)	
6. 33-P-006 (Proposed Tree Removal Plan)	
7. 33-P-100 (Proposed Landscape Plan, Pitch Area)	
8. 33-P-101 (Proposed Landscape Plan, Pembroke Cove Area)	
9. 33-P-200 (Proposed Landscape Sections)	



1.0 DEVELOPMENT DESCRIPTION

1.1 DEVELOPMENT DESCRIPTION

This Landscape Design Report has been prepared in support of an application for the 3FM Project being submitted by Dublin Port Company (DPC), focusing in particular on the proposed new Port Park site which forms part of the overall proposed development. The 3FM Project represents the concluding phase of the Masterplan initiatives essential for realizing Dublin Port's full potential by 2040. The project primarily centres on the Dublin Port Company-owned lands situated on the Poolbeg Peninsula, which constitutes one-fifth of the entire Dublin Port estate and is commonly referred to as the southern port area.

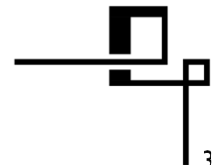
The proposed development site for the new Port Park is located on the southern end of the Poolbeg Peninsula in Dublin 2, bounded by South Bank road to the north, existing Dublin Port industrial yards to the east, Pembroke Cove due south and existing landscaped berm south and eastwards towards Irishtown Nature Reserve. The western Park boundary forms the combined proposal for the Active Travel Route (abbreviated as 'ATR' within this document), with the future development of the 'Glass Bottle Site' further west.

The new proposed site will comprise a total area of 5.2 Ha and will constitute an amalgamation of industrial lands currently underutilised for this prominent location on the fringe of Dublin Bay. Connection to the very popular leisure walk towards Irishtown Nature reserve is considered in the site extents, with the subject site boundary extending eastwards to ensure tree planting south of the landscaped berm can be undertaken. This extension is designed to enhance the overall environmental opportunities, result with low visual impact of the 3FM project, while also ensuring that the site remains connected to the surrounding natural environment and leisure opportunities.

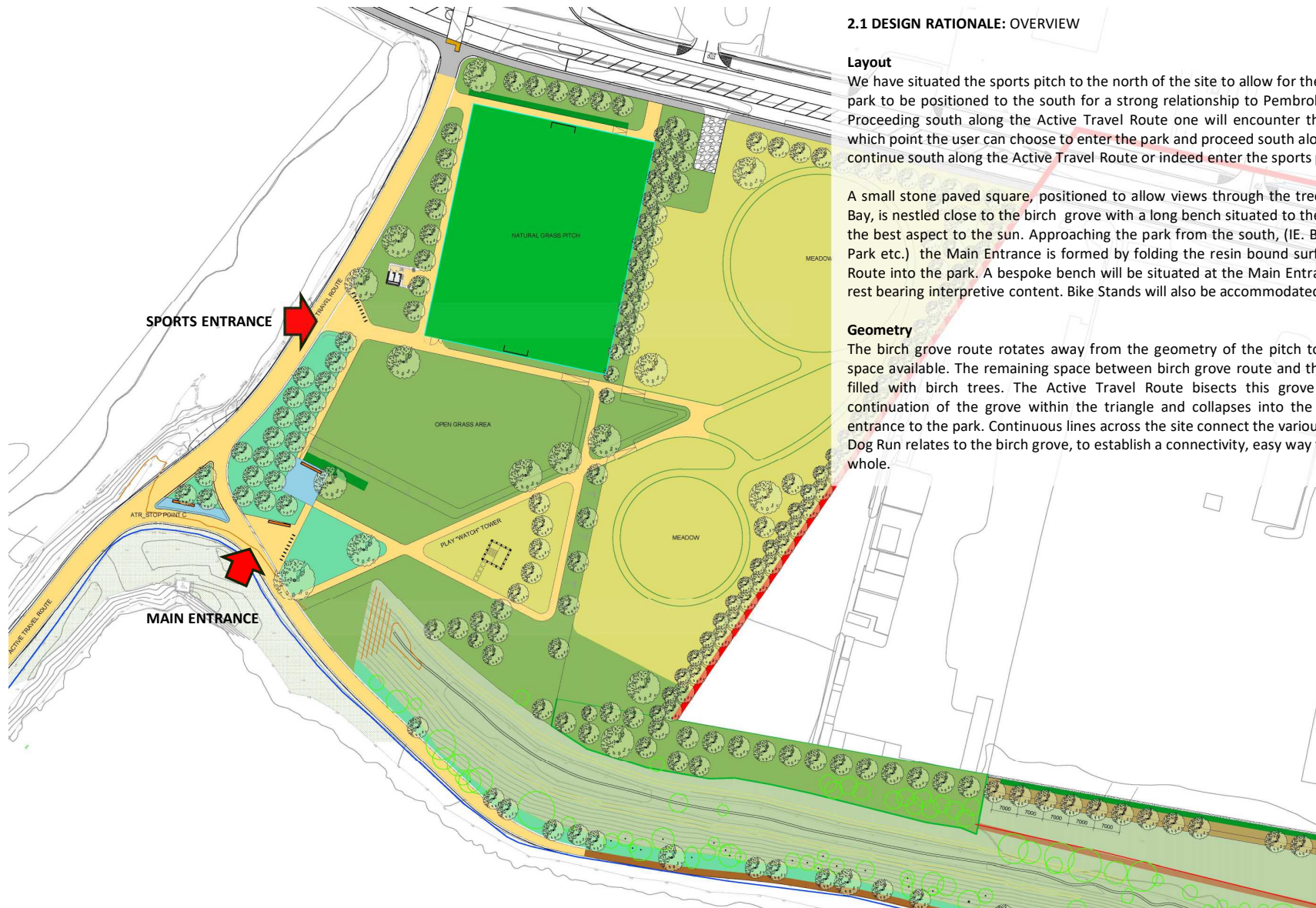
Proposed Port Park masterplan includes a large sport pitch with a natural ground surface, pedestrian routes and pathways, Pavilion building with public toilets, public square and urban realm treatment, a children's play tower, and a large wildflower meadow to the east. A 'share with care' corridor has been adopted on the western fringe of the Park to allow for a shared cyclist and pedestrian corridor which forms a central portion of the wider 3FM Project Active Travel Route.

Overall, the Port Park proposals seek to revitalize the industrial lands, by providing a contemporary parkland with public spaces and amenities to cater for a diverse range of activities, functions, and environmental considerations. A combined approach was adopted by the design team in the parkland design and has resulted in a welcoming hub for the local community and visitors from afar. A number of consultations and meetings were held with Dublin City Council Parks department to review the design, with feedback being adhered to its the design development. This also included a site walk with the design team to discuss the existing site conditions and development consideration at the beginning of the project.

The purpose of this design report is to provide an overview of the proposed development and includes a review of the proposed character areas within the Port Park proposals.



2.0 DESIGN STATEMENT: PROPOSALS



2.1 DESIGN RATIONALE: OVERVIEW

Layout

We have situated the sports pitch to the north of the site to allow for the leisure elements of the park to be positioned to the south for a strong relationship to Pembroke Cove and Dublin Bay. Proceeding south along the Active Travel Route one will encounter the "Sports Entrance", at which point the user can choose to enter the park and proceed south along a large birch grove or continue south along the Active Travel Route or indeed enter the sports pitch.

A small stone paved square, positioned to allow views through the tree stems, towards Dublin Bay, is nestled close to the birch grove with a long bench situated to the north of the square for the best aspect to the sun. Approaching the park from the south, (IE. Beach Road, Sean Moore Park etc.) the Main Entrance is formed by folding the resin bound surface of the Active Travel Route into the park. A bespoke bench will be situated at the Main Entrance with a feature back rest bearing interpretive content. Bike Stands will also be accommodated at this point.

Geometry

The birch grove route rotates away from the geometry of the pitch to widen the open green space available. The remaining space between birch grove route and the Active Travel Route is filled with birch trees. The Active Travel Route bisects this grove of birch trees with a continuation of the grove within the triangle and collapses into the park to form the main entrance to the park. Continuous lines across the site connect the various areas, for example the Dog Run relates to the birch grove, to establish a connectivity, easy way finding and a continuous whole.

2.0 DESIGN STATEMENT: PROPOSALS



2.2 DESIGN RATIONALE: NORTH END OF SITE

We have situated the sports pitch to the north of the site to allow for the leisure element of the park to be positioned to the south for a strong relationship to Pembroke Cove and Dublin Bay. There are 3 pitches total, with the northern larger pitch marked for underage GAA games and club practice matches while the southern 2 pitches are marked for 5-side soccer games. We have organised the pitches with a central spine pathway to ensure access to each pitch is located equally within range of the "Sports Entrance" and the changing pavilion, while allowing for each pitch to operate independently. The centralising of sporting activity frees the remainder of the site for quieter leisure activities. For technical information on the pitches

Main Features North of Site

- Pitch: see architect's report for input from pitch specialist
- WC Pavilion (See Darmody Architecture pack for details)

North end of Port Park, with Pitch

2.0 DESIGN STATEMENT: PROPOSALS



2.3 DESIGN RATIONALE: SOUTH END OF SITE

Geometry

The route bisects a grove of birch trees and collapses into the southern entrance to the park. Continuous lines connect the areas, planted triangle to southern entrance to park.

Main Features South of Site

Square and Play Tower

from the stone paved square extends a continuous looped walk that borders the southern part of the park. The looped walk cradles, on the east side, a bespoke timber play/watch tower. The tower, just over 5m x 5m in footprint, will rise in height over 6 half landings, to form two main levels for looking out over the adjacent treetops towards Dublin Bay.

Berm

As previously mentioned in this report, the existing 3.9m high Berm is proposed to be cut back on the west side of the site to establish a visual connection to Pembroke Cove and the expanse of Dublin Bay. This fill material, noted to be contaminated, (also containing Japanese Knotweed), will be disposed of offsite under the appropriate regulatory guidelines and restrictions. See RPS report for details.

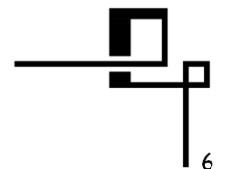
Interpretation

A long bench with a feature back rest will be installed at the Main Entrance, with interpretation content designed by We Are Bright.

Cycle Parking

We propose to provide a minimum of 17No. Sheffield style Bike Stands, with 34No. cycle parking spaces total for the park. 16No. Spaces are proposed to be located at the Main Entrance with 18No. spaces located at the Sports Entrance.

South end of Port Park, with entrance from Active Travel Route and access to Play Structure



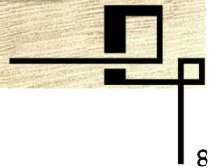
3.1 3D VIEW 01

VIEW 01, DUE EAST FROM ACTIVE TRAVEL ROUTE, AT PEMBROKE COVE



3.2 3D VIEW 02

VIEW 02, DUE NORTH FROM MAIN ENTRANCE, AT PEMBROKE COVE



3.3 3D VIEW 03

VIEW 03, DUE NORTH FROM ACTIVE TRAVEL ROUTE TOWARDS PLAY TOWER



3.4 3D VIEW 04

VIEW 04, DUE SOUTH FROM SQUARE TOWARDS, PEMBROKE COVE

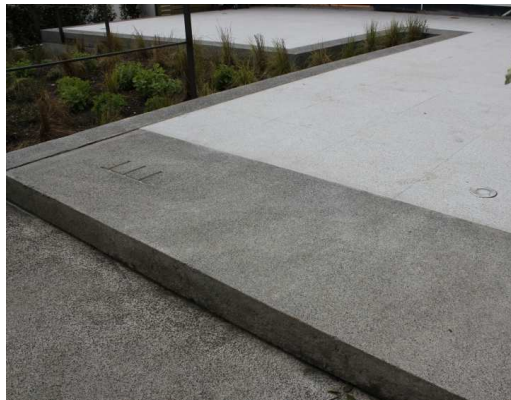


3.5 3D VIEW 05

VIEW 05, DUE EAST FROM ACTIVE TRAVEL ROUTE TOWARDS SYNTHETIC PITCH



4.0 REFERENCE / MATERIALITY

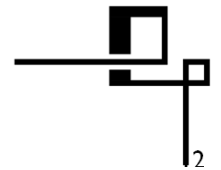


3.1 Reference / Materiality

As a practice, TTT is careful to use as reference only those places that we have visited in person. The connection from Terrace 1 to Terrace was influenced by the floating terraces of Farnsworth House in Illinois, by Ludwig Mies van der Rohe. The gesture of the house meeting the landscape below is achieved by the one powerful platonic shift towards that landscape.

The careful use of materials and texture, even in a single plane can spatially define transitions within a landscape from one space to the next, enriching the experience of passing through that landscape.

[Play/ Watch Tower Reference Image](#)



5.0 PLANTING



Aesculus hippocastanum 'Baumanii'



Quercus patrea



Prunus avium 'Plena'



Amelanchier arborea 'Robin Hill'



Betula pendula



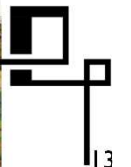
Pinus sylvestris

4.1 Trees, Proposed

Proposed

See Plant Schedule on Planting Plan, 33-P-003 for proposed location, species, size and quantity of trees. All trees will be best quality substantial size semi-mature trees when installed. All proposed trees have been specified for their ability to withstand exposed seaside conditions as well as their form, leaf texture, and autumn colour.

New ornamental planting to comprise of predominately native trees, mixed swale planting and hardy mat forming groundcover giving a varying palette of textures and colours throughout the seasons. Grass and wildflower seed with bulbs will be added to the 'Approach' area promoting biodiversity and providing additional colour throughout the growing season.



5.0 PLANTING



Pinus nigra var. *nigra*



Ilex aquifolium clear stem tree

4.2 Plot O Screening, Boundary Trees

See Plant Schedule on Planting Plan, 33-P-003 for proposed location, species, size and quantity of trees. All trees will be best quality substantial size semi-mature trees when installed and will provide an immediate impact as desired for screening views to Plot O from Sandymount. Optimal screening cover will be achieved by the third or fourth season.



Pinus sylvestris

5.0 PLANTING



Luzula nivea 'Lucius'



Dryopteris erythrosora

4.3 Woodland Groundcover

Proposed

New ornamental planting to comprise of predominately native trees, mixed swale planting and hardy mat forming groundcover giving a varying palette of textures and colours throughout the seasons. Grass and wildflower seed with bulbs will be added to the 'Approach' area promoting biodiversity and providing additional colour throughout the growing season.



Digitalis purpurea'



Polystichum setiferum



Dryopteris affinis



Asplenium scolopendrium



